



**AUSTRALIAN ALPACA
ASSOCIATION
MEMBERS
AUCTION
SATURDAY 26TH JULY
2025**

12 NOON

WWW.AUCTIONSPLUS.COM.AU



***National Alpaca Sale Show & Commercial
Introduce new bloodlines***



Contact Agent:

Nutrien Livestock

Wilson Beer

0428 505 520

Information for Buyers

AUCTION START: Saturday 26th July 2025 Auction –12.00 (noon)

INSPECTIONS: By Arrangements with Vendors Prior to Auction. See Vendors Facebook, Web sites etc. for Open Days.

REGISTRATION: All prospective buyers must be registered to buy with Auctions Plus. This is a once only registration/ induction process, and must be completed by Wednesday 23rd July 2025. Ph: 02 9262 4222. www.auctionsplus.com.au

DELIVERY: Alpacas may remain up to 4 weeks free of charge at Vendors property, or by arrangement.

TRANSPORT: Buyers should make their own transport arrangements prior to the auction.

INSURANCE: Buyers please arrange own insurance contract prior to sale day.

AAA TRANSFERS: All animal transfers with the AAA will be at the purchasers cost.

STATE HEALTH PROTOCOL: Buyers, please ensure that you are aware of the necessary State Health Protocol required at the destination of your purchase.

OPENING BIDS: Minimum opening bid applies: Single Lots—\$600.00; Females with Female Cria at Foot—\$1,000.00; Females with Male Cria at Foot—\$800.00. Reserved Lots—Opening bid will vary.

TERMS & CONDITIONS: All stock is offered under standard terms and conditions. These are available from the Agent, Nutrien. GST will be charged on top of bid price i.e. \$1500 + \$150 GST = \$1,650.00

TERMS OF PAYMENT: Terms of payment are EFT at time of purchase on Invoice. In accordance with the conditions of sale. For further information contact Nutrien : Wilson Beer 0428 505 520.

BUYING ORDERS, TELEPHONE BIDDING: Buyers orders can be placed with Nutrien prior to Auction day. Telephone Bidding, available for both national and international. **Buying Orders will be handled By Wilson Beer 0428 505 520.**

CATALOGUES: All details in this catalogue are provided by the Vendors and whilst all care has been taken in their preparation Nutrien Livestock & Australian Alpaca Association accept no responsibility for errors or mis-descriptions herein. Catalogues are available from AAA website, AAAMA Facebook, Nutrien, or online Nutrien & AuctionsPlus.

Wilson Beer: 0428 505 520 E: wilsonbeer@bigpond.com

Tim Woodham: 0436 015 115

Peter Godbolt: 0457 591 929



SPONSORSHIP OPPORTUNITIES

**The organising committee of the National Show
would like to offer the following sponsorships;**

Fleeces

Most Valuable Suri & Huacaya—Value \$600 ea

**(Package includes Advertisements, in the Catalogue & Website,
MC Promotion, Facebook Promotion, 1 complimentary entry &
Trophy presentation)**

Halter

Best Female Huacaya - Value \$300 ea

Best Male & Best Female Suri—Value \$300 ea

**(Package includes Advertisements, in the Catalogue & Website,
MC & AV Promotion, Facebook Promotion & Trophy
presentation)**

**LOTS MORE OPTIONS STILL AVAILABLE CONTACT
Carolyn@Alpaca.asn.au or 0410693802 for the full listing**

Lot 1 Alpha Centauri Daynah

SW Female Huacaya

IAR: 218922 DOB: 22.12.23



Alpha Centauri Alpacas —Unreserved

Elyson Jupiter (SW)

Alpha Centauri Kommissar (SW)

Sire: Alpha Centauri Kolorado (SW)

Dam: Alpha Centauri Dayzi (SW)

Elitealpaca Kalyani (SW)

Elitealpaca Dieudonne (SW)

Mated: N/A

Fleece: M20.4 SD 5.1 Trim On

Daynah is a stunning example of the best of our breeding over 20 years. She is sired by a Supreme Champion and has multiple Supreme Champion in her pedigree. Jupiter, Kommissar, Lorimer, Invincible and Milagro all feature prominently in her background. She is unmated but ready for joining to a male of your choice. We are no longer actively breeding and it is time to part with the very last and most valuable of our herd.

Her dam Dayzi was one of the most highly regarded females in our herd.

Lot 2 Alpha Centauri Kenadee + F/Cria

SDF Female Suri

IAR: 218830 DOB: 14.08.19



Alpha Centauri Alpacas —Unreserved

Surilana Piccolo (SLF)

Surilana Sentry (SW)

Sire: Surilana Pythagoras (SLF)

Dam: Alpha Centauri Kahleah (SLF)

Surilana Pookie (SW)

Elyson Krystal (SLF)

Mated: N/A

Fleece: M21.8 SD 4.7 Trim On

Kenadee is a very high quality coloured Suri producing excellent offspring. She is offered for sale with her most recent cria. Sweet Child O'Mine a SW female sired by multiple Supreme Champion Bedrock Chancellor (SW). Who is Lot 6 in the auction. Kenadee was set for what we envisaged to be a stellar show career until it was cut short by the onset of COVID. Her 5 year fleece stats are extraordinary for a Suri and this is a testament to the big names that feature in her pedigree.

Lot 3 Alpha Centauri Praha

SW Female Suri

IAR: 218921 DOB: 22.12.22



Alpha Centauri Alpacas —Unreserved

Kurrawa Tari Q ET (SW)

Surilana Pythagoras (SLF)

Sire: Kurrawa Red Hot so What ET (SW)

Dam: Alpha Centauri Payton (SW)

Surilana Milady Joanna (SW)

Surilana Pukatea (SW)

Mated: N/A

Fleece: M23.8 SD 5.2 Trim On

Praha is an exceptionally well grown female with excellent conformation. She has a pedigree that would be well regarded by suri breeders. She is a friendly female and easy to handle. Our intention was to mate Praha to Chancellor but as we had made the decision to no longer continue breeding this plan was put on hold. She would make a great addition to any suri breeders herd and we are confident of her ability to produce high quality offspring.

Lot 4 Alpha Centauri Starvani

SW Female Huacaya

IAR: 218924 DOB: 11.01.24



Alpha Centauri Alpacas —Unreserved

Elyson Jupiter (SW)

Alpha Centauri Alektra (SLF)

Sire: Alpha Centauri Wolfman (LF)

Dam: Alpha Centauri Star Orlaith (SMF)

Bedrock Sentinel (LF)

Xanadu Starlight (SW)

Mated: N/A

Fleece: M18.7 SD 4.0 Trim On

Starvani is the outcome of years of the best of our breeding programme. Her dam Star Orlaith was a prolific producer of high quality, low micron progeny. We are very confident of Starvani maintaining low micron well into her adult years. She has inherited this trait from the genetically gifted Sentinel line. On her sire's side she has the absolute best of our breeding. There are many animals in this side of her pedigree that we never offered for sale. Alektra, Jupiter, Class Act and Rainstorm.

Lot 5 Regal House Lola + F/Cria

SLF Female Huacaya

IAR: 213310 DOB: 03.05.17



Alpha Centauri Alpacas —Unreserved

Shanbrooke Plantel
Haynacho (SW)

Regal House Mr. Darcy (SLF)

Sire: Shanbrooke Pure Evolution (SW)

Dam: Regal House Lolita (SMF)

Shanbrooke Accoyo Pride (SW)

Regal House Lexie (SMF)

Mated: N/A

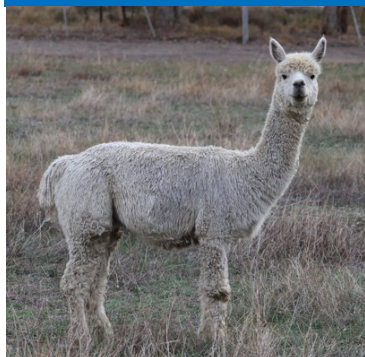
Fleece: M29.1 SD 4.7 Trim On

Lola is another of the females in our herd that after all our reduction sales we decided to keep due to her quality. She currently has a SW female cria at foot sire by the exceptionally highly regarded Blackgate Sunseeker. Her cria AC Villers-Bretonneux is showing all the hallmarks of a future champion. Very well grown and displaying impeccable conformation she will be ready for mating at the end of this year. Lola has a super dense fleece still displaying amazing alignment.

Lot 6 Bedrock Chancellor

SW Certified Male Suri

IAR: 241201 DOB: 19.05.19



Surilana Matrix (SW)

Pinjarra Perfecto (SDB)

Sire: Bedrock Cryptic (SW)

Dam: Eversprings Johara (SDB)

Surilana Princessa (SW)

Eversprings Qaisuma (SMF)

Mated: N/A

Fleece: M23.2 SD 5.2 Trim On

Chancellor is the sire of Sweet Child O'Mine (cria at foot Lot 2). Chancellor was hand picked by us from the well regarded Bedrock herd in early 2020 to cover our entire Suri herd from 2021 onwards. We then moved overseas for 3 years and this put the plans for Chancellor on hold. During this time we reduced the suri held significantly. Thus Chancellor was only ever used across Kenadee producing two very high quality progeny. As we are selling the last of the Suri's in this auction we no longer have a need for Chancellor.

He would make an amazing addition to any herd having been awarded Supreme Champions in WA prior to coming to us.

Alpha Centauri Alpacas —Unreserved

Lot 7 EliteAlpaca Valanya

SW Female Huacaya

IAR: 173105

DOB: 09.06.12



Alpha Centauri Alpacas—Unreserved

Winterbrook Prince John (SW)
Sire: Windsong Valley Snow Prince (SLF)
Windsong Valley Snow Belle

Purrumbete Highlander (SW)
Dam: Windsong Valley Jasmine (SW)
Windsong Valley Maygena (SDF)

Mated: NA
Fleece: M 21.0 SD 4.0 Trim On at 11 years of age

Valanya represents the very last of our esteemed EliteAlpaca herd offered for sale. She is from the famous Windsong Valley line of breeding with exceptional genetics of Winterbrook Prince John, a double dose of Purrumbete Highlander along with Ledgers Dream all in her pedigree. She has maintained exceptional fleece stats for many years. She is in excellent breeding condition and is keen to be joined. We highly recommend Valanya to any breeder looking to make a leap forward in their breeding program.

Lot 8 Forestglen Marie Anais

SMF Female Huacaya

IAR: 256638

DOB: 22.05.23



Forestglen Alpaca Stud —Reserved

Ambersun Fortune of Monaco (SW)
Sire: Forestglen Anarchy (SLF)
Forestglen Annetta (MF)

Windsong Valley Firedragon (LF)
Dam: Windsong Valley Marie Antoinette (MF)
Pengelly Miranda (LF)

Mated: LMD 14.05.25 to Millduck Toy Boy (MF)
Fleece: M 20.6 SD 4.7 CF 97.6 SL 125 CU 32.7 Trim Off

Marie Anais is a well grown female on a correct frame. She has a soft handling fleece with superior staple length (125mm at last year's shearing). Her dam, Windsong Valley Marie Antoinette, has reliably produced quality cria. Marie Anais has outstanding genetics, combining Windsong Valley Firedragon with Ambersun Fortune Seeker. Marie Anais' sire, FG Anarchy, has produced multiple broad ribbon winners in halter & fleece, most recently achieving Best Med/Dark Fawn Fleece at 2025 Syd Royal Show. Marie Anais has been mated to Millduck Toy Boy, his progeny have been highly awarded including 2 Supreme Champions & 40+ broad ribbons across more than 20 shows.

Lot 9 Forestglen Hailstorm

SW Female Huacaya

IAR: 256605

DOB: 09.04.23



Gunslinger is not available for outside matings.

Forestglen Alpaca Stud —Reserved

Ambersun Fortune of Monaco (SW)
Sire: Forestglen Antarctic (SW)
Forestglen Antarctica (SW)

Blackgate Lodge Snowmaster (SW)
Dam: Forestglen Hallelujah (SW)
Forestglen Song of Joy (SW)

Mated: LMD 14.05.25 to Mapa KH Gunslinger (MF)
Fleece: M 20.0 SD 4.2 CF 98.6 SL 90 CU 43.7 Trim Off

Hailstorm is a quiet, well-grown female on a correct frame and is carrying a bright, soft-handling fleece. Her dam Hallelujah is one of our treasured Snowmaster females who has reliably produced quality female cria. Hailstorm has top genetics combining Ambersun Fortune of Monaco, Jolimont Warrior & Blackgate Lodge Snowmaster. She has been mated to Mapa KH Gunslinger, a highly awarded male throughout 2024 show circuit, including 2 supreme champions, multiple Best Med/Fawn awards including (Canberra Royal & Sydney Royal in 2024) and achieved 1st place in a highly competitive class at 2024 Nationals.

Lot 10 Eaglewood Dalila

SMB Female Huacaya

IAR: 257988 DOB: 30.04.22



Sire: Orrapooro Trumpeter (MG)
Shanbrooke Silverspoon TW
ET (LG)
Shanbrooke Miss Temptation (RG)

Dam: Eaglewood Kai (MG)
Eaglewood Dulce (MG)
Eaglewood Dimiss (LF)

Mated: Paddock Mated to Eaglewood Prince Una (MG)

Fleece: 2023 M 19.5 SD 4.0 CRV 49.6 Trim Off

2024 M 20.6 SD 3.9 CRV 44.1 1.7kg Saddle Trim On

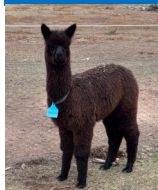
Dalila is a very dense and typey female who has had a successful show career winning Best Brown at Gunning show and always been placed. Also was Reserve Champion junior female Gunning. Extremely dense fleece showing very good crimp definition and will be looking forward to the progeny of Prince Una who is a half brother to Precision Zanaibar (RG) stud male multiple Best Grey winner.

Eaglewood Alpacas—Reserved

Lot 11 Woodnote Thelma + M/Cria

MG Female Huacaya

IAR: 250125 DOB: 15.01.20



Sire: Natural Allure Warruorraa (RG)
Eaglewood Thrighten (RG)
Valparaiso Tjuz (MB)

Dam: Almora Chevalier Noir (TB)
Morning Star Lavinia (MG)
Morning Star Maya (MG)

Mated: Paddock Mated to Eaglewood Prince Una (MG) Mar-Apr

Fleece: 2023 M 22.8 SD 5.2 CRV 38.6 Trim Off

2024 M 23.0 SD 4.7 CRV 40.0 Trim On

Thelma is a really lovely medium grey female. She has a nice black male cria at foot that will be included and can be registered. She has a good fleece and her sire came 2nd out of 8 at Sydney Royal. Looking forward to the cria from Prince Una who has a good strike rate of greys from greys. Prince Una has been Best of grey at 2 shows. She is an excellent mum and has no problems with cria.

Eaglewood Alpacas—Reserved

Lot 12 Eaglewood Dulcey

SBB Female Huacaya

IAR: 263870 DOB: 15.05.24



Sire: Orrapooro Trumpeter (MG)
Shanbrooke Silverspoon TW
ET (LG)
Shanbrooke Miss Temptation (RG)

Dam: Eaglewood Kai (MG)
Eaglewood Dulce (MG)
Eaglewood Dimiss (LF)

Mated: Maiden

Fleece: M 15.3 SD 3.3 CRV 44.1 1.15kg Saddle Trim On

Dulcey is an extremely dense and typey young black female. She has an excellent frame and will go on to be an excellent breeder. Ideal for the grey or black breeder. She has had an outstanding start to her show career winning Reserve Champion Junior Female at Boorowa and Hawkesbury Show plus Best Black at Boorowa show. Also winning 1st at Moss Vale show. Dulcey can be mated to any of the Eaglewood males for up to 12 months after purchase included in sale.

Eaglewood Alpacas —Reserved

Lot 13 Elimbari Titan

SW Certified Male Suri

IAR: 249762 DOB: 09.03.22



Surilana T-Pito (SW) Surilana Joel (SW)
 Sire: Surilana Behold (SW) Dam: Elimbari Portia (SW)
 Surilana Believeable ET (SW) Elimbari Liberty (SW)

Fleece: Currently unavailable

This young certified male has solid bone and great confirmation.

He has excellent bloodlines full of Accoyo genetics with very pleasing density to his fleece. He is needing to be used and is being wasted in our paddock so a lucky buyer will gain a magnificent stud male. He has been shown both halter & fleece and is a mulit broad winning male at both junior through to adult ages. Shows included Gunning, Boorowa, Canberra Royal and Sydney Royal.

Survival Alpacas —Unreserved

Lot 14 Survival Temperance

SW Female Suri

IAR: VS0003 DOB: 03.04.24



Bumble Hill Chakri (SW) Alabaster Kid Klu (SW)
 Sire: Birrong Bandit (SW) Dam: Baarooka Kaeli (SW)
 Birrong Ladra (SW) Baarooka BLK20(SW)

Mated: N/A

Fleece: Unshorn

This is a wonderful show girl which we have decided to release as one of our first bred suri's ! She has a wonderful bright, lustrous white fleece and is exhibiting a flat wave style lock with good independence indicating excellent density while remaining fine, which carries evenly across her body. This girl has been awarded Champion ribbons at multiple shows and given her sire results as being a multi Champion in fleece shows you'd expect this to be the case. This girl is ready to go and get in the ring and we are sure she will please her new owners.

Survival Alpacas —Reserved

Lot 15 Mapa LS Violet

SMF Female Huacaya

IAR: 253325 DOB: 06.01.23



ILR Snowmass Elite Trans-
 dence SW) Plantel Shabaka (LF)
 Sire: Patagonia Elite Lone Star
 (SW) Dam: Mapa Rosette (SW)
 Patagonia Celtic Starlet(SW) Yenaminut Jacklynn

Mated: LMD: 10.05.25 EP Cambridge Fire Hunter (SW)

Fleece: M 16.8 SD 3.5 CF 100 SL 90 CRV 50.1 Trim On

This female produces a good excellent amount of fleece, while she still is maintaining a low micron. She has been mated to EP Cambridge Fire Hunter to enhance her density and give her more defined crimp style.

On her Sire side has Snowmass genetics, which are now harder to access. This mating should be a good match with the genetics onboard and possibly a good animal for coloured breeders.

Mapa Alpacas —Reserved

Lot 16 Glenhope Sapphire + M/Cria

SW Female Huacaya

IAR: 248200 DOB: 17.03.21



Mapa Alpacas—Unreserved

Glenhope Griffin (SW) Glenhope Gibraltar (SW)
 Sire: Glenhope Highty (SW) Dam: Glenhope Lyrical (SW)
 Glenhope Hoot ET (SW) Glenhope Rebel (SW)

Mated: LMD 25.04.25 Patagonia Elite Lone Star (SW)

Fleece: M 20.4 SD 3.7 CF 98.9 SL 90 CRV 44.6

Sapphire is a well grown female and has had her first cria which she has feed with no problems for a maiden.
 She has a upright frame and would be ideal for commercial fleece given her background of primarily solid white.
 Her male cria, sire by Grey Gum Classified will be registered prior to auction and is growing out well.
 Excellent 3in1 package and last spitting off 13.05.25

Lot 17 Mapa Kahlia

SW Female Huacaya

IAR: 246683 DOB: 29.03.19



Mapa Alpacas—Reserved

Suncloud Kinetic (SW) Blackgate Lodge Snowmaster (SW)
 Sire: Suncloud Jandino (SW) Dam: Stansfield Park Lulu (SW)
 Suncloud Sienna (SW) Jabiru Charlotte (SLF)

Mated: LMD 22.04.25 Patagonia Elite Lone Star (SW)

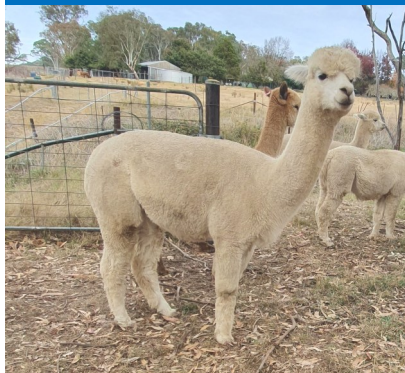
Fleece: M 17.9 SD 3.7 CF 99.8 SL 130 CRV 43.6

This female has a lots of WA genetics in her background which will give east coast new owners more broader genetics. She is still maintaining excellent fleece results from last years shearing.
 The male she is mated to, Patagonia Elite Lone Star (SW) has a wonderful bright, white & lustrous fleece which should add to the cria.

Lot 18 Lillyfield Royal Patronage

SLF Female Huacaya

IAR: 251411 DOB: 13.01.21



Lillyfield Alpacas—Reserved

Blue Grass Bollinger (LF) Forestview Prince of Thieves (SW)
 Sire: Lillyfield Up the Ante (SDF) Dam: Garibaldi Royal Princess (LF)
 Lillyfield Matilda (SMF) Shanbrooke Watch Me Shine (SW)

Mated: LMD 02.11.24 Lillyfield Mojave (LSF)

Fleece: M21 SD 4.5 CRV 46 SL 75 Trim On

Beautifully framed female with great capacity.
 Royal Patronage has an excellent pedigree.
 Falls pregnant easily and is a great mother.
 She cuts an impressive fleece that will sure to please.
 Due in early October to Mojave (Warrior grandson) and check tested beginning April 2025.

Lot 19 Lillyfield Kanai

SLF Female Huacaya

IAR: 252462 DOB: 22.12.19



Lillyfield Alpacas — Reserved

Forestview Prince of Thieves
(SW)

Lillyfield Up the Ante (SDF)

Sire: Lillyfield Gaughin (SW)

Dam: Lillyfield Kerava (SMF)

Lillyfield Marsheille (SDF)

Lillyfield Helsinki (SMF)

Mated: LMD 27.12.24 Cambridge Showman (SMF)

Fleece: M 18.1 SD 3.6 CRV 49 SL 85 Trim On

Bred in the purple from our finest lines—this highly attractive, well balanced female produces an excellent fleece of commercial length even when pregnant. She is a very good mum & falls easily. We are retaining a daughter in our breeding program. Mated to Showman our amazing boy who produces champion after champion. She has check tested beginning of April 25.

Lot 20 Lillyfield Harper

SW Female Huacaya

IAR: 251417 DOB: 27.03.21



Lillyfield Alpacas — Unreserved

Blue Grass Bollinger (LF)

EP Cambridge Oblivion ET (SW)

Sire: Lillyfield Azamarca (LF)

Dam: Lillyfield Gilt Edge (SW)

Lillyfield Carazam (SW)

Jolimont Orina (SW)

Mated: LMD 01.12.24 Grey Gum Classified (SW)

Fleece: M 20.1 SD 4.2 CRV 51 SL 70 Trim On

Harper has a lovely crimped fleece with an excellent CRV.

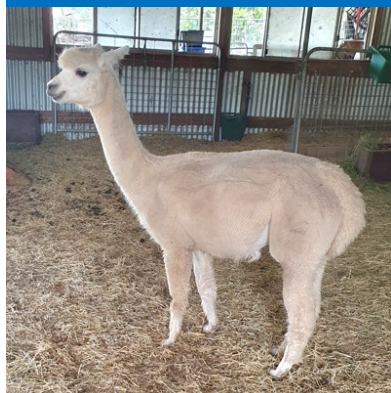
She is a good mum, breeds easily & produces a lot of milk.

Her backline is full of the best genetics and would be an asset to any herd.

Lot 21 Lillyfield Nakano

SLF Female Huacaya

IAR: 252467 DOB: 14.03.20



Lillyfield Alpacas —Reserved

Forestview Prince of Thieves
(SW)

Blue Grass Bollinger (LF)

Sire: Lillyfield Scorerer (SW)

Dam: Lillyfield Serena (SW)

Brabant Fairy-Jane (SW)

Wongagene Peruvian Irina (SW)

Mated: LMD 14.04.25 Cambridge Showman (SMF)

Fleece: M 19.9 SD 4.0 Trim On

Nakano has produced some really lovely cria for us—we are retaining one daughter in the group. She is a very feminine girl, from a mulit supreme winning sire. Her dam was one of our long term finer females so she has some impressive genetics.

Lot 22 Lillyfield Tensei

SW Certified Male Huacaya

IAR: 260444 DOB: 21.12.21



Eringa Park Show Breaker
(SW)

EP Cambridge Oblivion ET (SW)

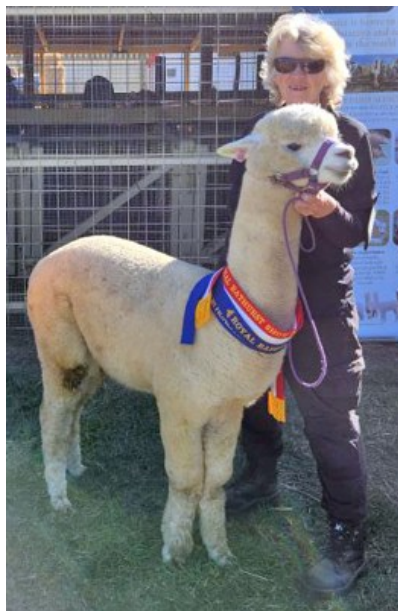
Sire: Cambridge Showman (MF)

Dam: Lillyfield Kanji (SW)

Cambridge Suki

Lillyfield Kazbar

Fleece: M 19.9 SD 4.0 CRV 47 SL 100



Tensei is a well grown Male exhibiting excellent substance of bone from one of our favourite breeding females and our most prepotent stud sire “Showman”. This boy has a very even fleece with excellent length & lustour. Only lightly shown as a junior, but doing extremely well as a Senior Male in 2025, winning Championships at Gunning, Royal Bathurst & Reserve at Boorowa 2025 & Charles Ledger 2024.

Tensei is a Firedragon great grandson & Oblivion grandson and he has just started working, with great enthusiasm.

Both mother & full sister are Championship winning animals, so we are confident in his capacity to make genetic improvements.



Lot 23 Patagonia Celtic Cello

SDF Female Huacaya

IAR: 187122

DOB: 22.04.13



Shanbrooke Accoyo Tulaco (SW)

Jolimont Caesar (SW)

Sire: Patagonia Celtic Triumph

Dam: Patagonia Catalina (SDF)

Patagonia Celtic Rose (SMF)

Lavender Park Caddie (SDF)

Mated: LMD 20.04.25 Patagonia Elite Grantham

Fleece: M 26.5 SD 4.8 CF 80.9 CRV 38.3 Trim On

Cello was a maiden mum in 2024 producing a gorgeous female LF cria to Patagonia Elite Grantham. She birthed with no problems and has proven herself to be an exceptional mother.

She has been remated to Grantham and will be an asset to any coloured breeding program.

Janella Alpacas —Reserved

Lot 24 Humminghills Olivia

SMB Female Huacaya

IAR: 230280

DOB: 10.04.20



Blue Grass Waterloo Sunset (RG)

Tarraganda Lodge Gaultier (MG)

Sire: Malakai Midnight Blues ET (RG)

Dam: Jurustalle Odelia (SDB)

Manna-Gum Farm Show Time (TB)

Alblacka Olearia (MG)

Mated: LMD 20.04.25 Patagonia Elite Grantham

Fleece: M 28.4 SD 5.4 CF 69.4 CRV 30.4 Trim On

Olivia is a dense, rich red brown female. A maiden female in 2024 she produced a Rose Grey male, who is being retained by us. She has proven to be an excellent mother, easy to manage and has a sweet temperment . Now mated to Patagonia Elite Grantham, this mating should produce an exciting cria.

Olivia would be an asset to any coloured breeding program.

Janella Alpacas —Reserved

Lot 25 Patagonia Elite Grantham

SW Certified Male Huacaya

IAR: 217960

DOB: 10.03.16



Snowmass Elite Legend (SW)

Patagonia Celtic Triumph (SW)

Sire: ILR Snowmass Elite Transcendence (SW)

Dam: Patagonia Celtic Gossamer (SLF)

SPA Alpaca's Peruvian Sonnet (SW)

Jolimont Karly (SW)

Mated: N/A

Fleece: M 23.4 SD 5.3 CF 89.9 CRV 38.6 Trim On

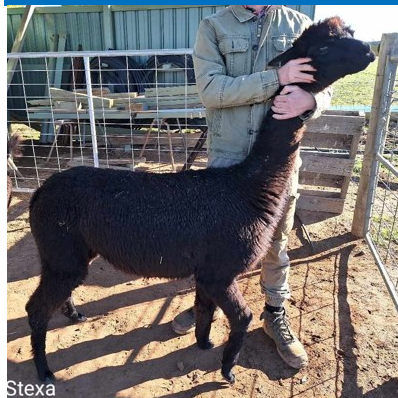
Patagonia Elite Grantham is an impressive SW male with excellent genetics. His sire, ILR Snowmass Elite Transcendence produced many certified males. He is easy to manage and a very keen worker. Prior to starting his breeding career, he had an impressive show record including Champion Huacaya Fleece 48-60 months at Sydney Royal 2021 and at National Fleece Challenge in 2020 was awarded Reserve Champion Huacaya Fleece 48-60 months. He is only for sale as we are no longer breeding.

Janella Alpacas —Reserved

Lot 26 Rockleigh Stexa

Black Female Huacaya

IAR: 233839 DOB: 05.02.19



Stexa

Sire: Greenwood Bentley (MG)
Follyfoot Farm Casanova (TB)
Follyfoot Farm Pizzaz (SDB)

Dam: Parnabrae Brutus (SDF)
Trumar Kendall (TB)
Leajay Crysta (SMB)

Mated: N/A

Fleece: 2019 1st Fleece M 18.4 SD 4.5 CF 98.8 CRV 32.4 Trim Off
2024 6th Fleece M 22.2 SD 6.3 CF 90 CRV 32.2 Trim Off

Stexa is a lovely protective mother whom is open for a spring mating or mating next autumn. Her previous cria have been lovely well grown animals that have carried a lot of their fathers fleece genetics. Stexa is lacking density so would do well paired with a dense male.

Rockleigh Alpacas—Reserved

Lot 27 Rockleigh Tiara

DF Female Huacaya

IAR: 254581 DOB: 22.02.24



Sire: Baringhup The Wizard (TB)
Haylilla Zubjuk (TB)
Haylilla Black Pearl (TB)

Dam: Fine Choice Armani (SW)
Rockleigh Rarity (SDF)
Trumar Lauren (TB)

Mated: Maiden

Fleece: M 16.5 SD 4.3 CF 98.3 CRV 60.2 Trim Off

Tiara is a stunning energetic young girl flaunting ultrafine fleece on a conformationally correct frame. She has an impressive heridary line backing her up and its shows in her form and fleece. Tiara's fleece is very consistent throughout and her second fleece is coming through beautifully.

Rockleigh Alpacas—Reserved

Lot 28 Rainbows End Nirvana

LF Certified Male Huacaya

IAR: 219282 DOB: 09.12.17



Sire: Arcady Leif (R)
Rainbows End Odin (BB)
Blackgate Lodge Shannon (TB)

Dam: Blackgate Lodge Sunseeker (LF)
Rainbows End Lianna (LF)
Rainbows End Heritage Lass (TB)

Fleece: 2024 7th Fleece M 24.9 SD 4.4 CF 89.2 CRV 52.5 Trim Off

Nirvana is a multi award winner at both halter and fleece event shows interstate placing first and second in his class. Nirvana is a very eager to work proven certified male. He is a very well behaved male on the halter and can complete paddock, corral and halter lead type matings. Nirvana's fleece is very dense and holding very nice stats well into his 7th fleece. He would make a great addition to someone looking to add density and consistency to their fleeces.

Rockleigh Alpacas—Reserved

Lot 29 Tiyata Forbidden Love

STB Female Suri

IAR: 250154 DOB: 14.05.20



Sire: ILR Riptide's Ultimate Black (TB)
Baarrooka UB Toblerone (TB)
Baarrooka Licorice (TB)

Dam: Baarrooka Durango's Odyssey (SMF)
Baarrooka The Honeymooners (BB)
Baarrooka Supreme Harriet (SMB)

Mated: N/A

Fleece: M 27.7 SD 6.5 CF 70.9 Trim On

Forbidden Love is a stunning female with an amazing combination of genetics, and they don't get much blacker than this ! She combines the positive attributes of a suri fleece a lustrous, soft handling, dense fleece upon a strong frame. With all that combined, Forbidden Love was awarded Reserve Champion Adult Suri Female at 2022 National Show. Forbidden Love would greatly suit a breeder looking to improve their black suri herd.

Tiyata Alpacas —Reserved

Lot 30 Baarrooka Foreign Fantasy

SLB Female Suri

IAR: 252000 DOB: 04.04.20



Sire: ILR Moon River's Peruvian
Baarrooka Durango's Foreign
Baarrooka Lisa Lindsay (SW)

Dam: ILR Moon River's Peruvian
Baarrooka Durango's Magic
Baarrooka Lonesome Day (SW)

Mated: N/A

Fleece: M 25.5 SD 5.7 CF 82.1 Trim On

A standout in the paddock, Fantasy catches the eye with a strong frame and an impressive suri head. Bred in the purple, Fantasy has a double dose of the famous 'Durango' and shares a sire with the 2019 National Supreme Champion Suri. Fantasy is an elite female with a dense, lustrous, independent fleece that would be a great addition to improve any suri breeding program.

Tiyata Alpacas —Reserved

Lot 31 Tiyata Treasure

SMB Female Suri

IAR: 261478 DOB: 03.04.23



Sire: Surilana Madolo (SMB)
Surilana Tropical Island
Surilana Isla ET (SW)

Dam: Shahrizai Crash (SMF)
Tiyata Linnie's Gift (SMF)
Pucara Dench (SW)

Mated: N/A

Fleece: 1st M 19.5 SD 5.3 CF 97.7 Trim On
2nd M 19.8 SD 5.8 CF 95.9 Trim On

Treasure is a typey female that exhibits the classic suri head on a strong frame. Treasure's first two fleeces have been consistent, a 'gutsy' fleece with nice density and coverage while staying fine.

With a great pedigree, Treasure is ready for a mating and will produce some very nice cria.

Tiyata Alpacas —Unreserved

Lot 32 Tiyta Daydreamer

SLB Female Suri

IAR: 261476 DOB: 09.03.23



Tiyta Alpacas—Unreserved

Sire: ILR Riptide's Ultimate Black (TB)
Baarrooka UB Toblerone (TB)
Baarrooka Licorice (TB)

Dam: Baarrooka Durango's Foreign Affair (LB)
Baarrooka Foreign Fantasy (SLB)
Baarrooka Durango's Magic (SMB)

Mated: NA

Fleece: 1st Fleece M 19.1 SD 4.0 CF 97.7 Trim On

2nd Fleece M 21.8 SD 4.5 CF 95.3 Trim On

Daydreamer boasts a magnificent pedigree. Her sire was awarded 'Best Black' in 3 different states/territories and her dam has a double dose of super sire 'Durango'.

She has the fine, soft handling fleece of her sire and will carry 1 black gene.

Daydreamer would impact a coloured breeding program greatly and likely to throw black.

Lot 33 Otway Orchard Mirage

MB/R Female Huacaya

IAR: 262978 DOB: 29.02.24



Otway Orchard Alpacas—Reserved

Sire: Vista El Comodin (MG)
Goldleaf Blueprint (LG)
Goldleaf Casino Flutter (LG)

Dam: Appaloosa Archipelago (APP)
Otway Orchard Déjà Vu (Roan)
Combe Hill Alice (LF)

Mated: Maiden

Fleece: M 20.5 SD 5.8 CF 92.6 Trim On

Mirage is an upstanding young female with a medium frequency fleece style that extends well into her extremities. Her roaning is continuing to intensify. She is sired by our quality grey male Goldleaf Blueprint whose grandsire is the well-known Tarranganda Lodge Ekeko, and her dam is our roan Otway Orchard Déjà Vu who is a consistent producer of quality cria in grey and roan. With this combination she should hold her micron as she matures. We are retaining two of her full sisters in our breeding programme so can release Mirage for sale. Mirage is also halter trained, open and ready to be joined to a male of your choosing.

Lot 34 Otway Orchard Eternal Flame

SLB Female Huacaya

IAR: 244748 DOB: 18.03.23



Otway Orchard Alpacas—Reserved

Sire: Peerless Marlecchino (W/MF)
Appaloosa Archipelago (APP)
Black Stump Guadeloupe (W/DB)

Dam: Otway Orchard Meteor (RG)
Otway Orchard Royal Elegance (SDF)
Otway Orchard Daphne (SW)

Mated: Currently being mated to Goldleaf Blueprint (LG) TBC

Fleece: M19.5 SD 3.9 CF 98.7 Trim On

Eternal Flame has a soft handling fleece with medium frequency fleece style and consistency of micron, on a solid correct frame. She is sired by our outstanding appaloosa male Appaloosa Archipelago and with the grey genetics of Bluegrass Waterloo Sunset on her maternal side, she is a fantastic opportunity for the coloured or appaloosa breeder.

Flame is halter trained and easy to handle. She is to be sold pregnant to our quality grey male Goldleaf Blueprint and believe this combination should produce a stylish cria.

Lot 35 Silcron Mikasa

SW Female Huacaya

IAR: V00033 DOB: 04.12.24



Yaringa Heritage ET (SW)

Lillyfield Alchemy (SW)

Sire: Silcron Harpoon (SW)

Dam: Silcron Majoko (LF)

Silcron Harp (SW)

Silcron Yuki-Onna (SW)

Mated: Maiden

Fleece: Untested

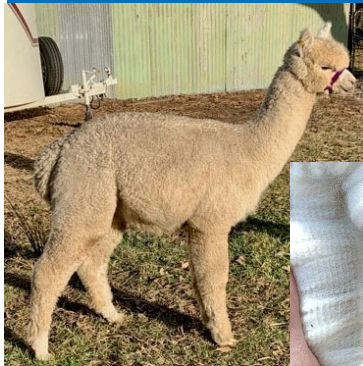
A well grown young weanling showing good fleece style, Mikasa is the third Harpoon cria from this dam. Her full siblings are maintaining excellent fleece stats and I expect Mikasa will do the same. Her lineage includes Warrior, Auzengate, Tijera Hugo and Peruvian Nano. This maternal line has proven to be very productive.

Silcron Alpaca Stud —Reserved

Lot 36 Silcron Mystique

SW Female Huacaya

IAR: V00037 DOB: 19.04.24



Yaringa Heritage ET (SW)

Silcron Icemaster (SLF)

Sire: Silcron Harpoon (SW)

Dam: Silcron Mystic Woman (SW)

Silcron Harp (SW)

Silcron Majoko (SLF)

Mated: Maiden

Fleece: M 14.9 SD 3.3 CF 100 CEM 6.3 CRV 44.1 Trim On

Mystique is a very attractive young female with an abundance of ultrafine soft handling and stylish fleece on an excellent frame. Her fleece results are impressive. She carries terrific genetics and is a full sister to Voodoo Child who enjoyed a successful show career including Champion Junior Female at the 2023 Charles Ledger Show. Voodoo is retained in the Silcron herd, however, her sister Mystique is available to join yours.

Silcron Alpaca Stud —Reserved

Lot 37 Wedgetail Rise Evie

RG Female Huacaya

IAR: 238702 DOB: 24.12.17



Jentez Park Grey Lad (RG)

Kenadi Macho (RG)

Sire: Eaglewood Maximus (RG)

Dam: Eaglewood Henrietta (LG)

Eaglewood Midnight (TB)

Eaglewood Sopherio (MG)

Mated: LMD 01.05.25 Goldleaf Guerre Nuit (MG)

Fleece: Pending

Evie has a soft handling rose grey fleece with stunning markings. She has quality colour genes in her background including ILR Snowmass Grey Legend. Born on Xmas Eve, she has a friendly nature, is halter trained and easy to handle. Evie is a proven breeder and an attentive mother. Her beautiful show quality daughter, Evita, is being retained in our breeding programme.

Wedgetail Rise Alpacas —Reserved

Lot 38 Wedgetail Rise Marilyn

SDB Female Huacaya

IAR: 252563 DOB: 15.03.21



Wedgetail Rise Alpacas—Reserved

Sire: Wyona Censational (TB)
Follyfoot Farm Good as Gold (R)
Follyfoot Farm Goldilocks (SDF)

Dam: Coonawarra Nostradamus (TB)
Wyona Norma Jean (R)
Pengelly Tabitha (TB)

Mated: LMD 10.05.25 Yenaminut Encore (LF)

Fleece: Pending

Marilyn is a sweet girl with highly desirable colour genetics in her background including Purumbete El Dorado, Coonawarra Nostradamus, and Wyona Censational. There is plenty of black in her background and she would be a great addition to a colour breeding program.

She produces a lovely fleece with good length and even colour distribution. She is halter trained. Normally we would retain her, but a smaller property means our loss is your gain.

Lot 39 Wedgetail Rise Zoe

DG Female Huacaya

IAR: 252575 DOB: 24.03.22



Wedgetail Rise Alpacas—Reserved

Sire: Morningt Star Blacklight (TB)
Vista El Noir Titano ET (MG)
Morning Star Titania (LG)

Dam: Abancay Black Warrior (TB)
Wyona Zenobia (TB)
Porters Black Zambucca (TB)

Mated: LMD: 10.05.25 Follyfoot Farm Good as Gold (R)

Fleece: Pending

Zoe has been a very difficult decision to add to the auction due to her beautiful fleece, sweet nature, and stunning black and grey genetics including Morning Star Blacklight, Elysion Mercury, and Abancay Black Warrior.

Zoe has proven her quality in the show ring, achieving 2nd intermediate Grey Female (halter) at 2023 Boorowa Show and 3rd Junior Grey Female (halter) at Royal Canberra Show 2023 in highly competitive classes.

Lot 40 Wedgetail Rise Candy

Black/White Female Huacaya

IAR: 252557 DOB: 28.02.20



Wedgetail Rise Alpacas—Unreserved

Sire: Blue Grass Bollinger (LF)
Lillyfield Top Shelf (BB)
Wyterrica Topsy (TB)

Dam: Painted Pines Maximus (Apps)
Maison Mauve Roxie (Apps)
Maison Mauve Jumanji (BB)

Mated: LMD 01.05.25 Follyfoot Farm Good as Gold (RN)

Fleece: Pending

Candy's spotty nose and legs are a dead giveaway of her appaloosa heritage but regrettably she did not have the requisite six spots within the saddle to be classified as an appaloosa herself. She would be ideal for a fancy breeding program.

Candy is easy to handle in the pens due to her very gentle nature, she is an excellent mother, and her gorgeous daughter, Cindy, is being retained in our forever herd.

Lot 41 Bardella Park Jude Law

RG Certified Male Huacaya

IAR: 233479

DOB: 24.12.18



Snowmass Conopa's Kahuna
(LB)

Hope Downs El Gordo (LG)

Sire: ILR Snowmass Royal Kahuna
(SW)

Dam: Shanbrooke Judy Girl (RG)

Snowmass Royal Wedding
(LB)

Arcady Umbrette (Rn)

Fleece: 6th Fleece M 22.1 SD 4.5 CF 95.1 CRV 47.0 Trim On



Progeny: Yenaminut Judy Bell



A male in this league should be out working and improving the grey herd in Australia, so we have opened him up for purchase at this year's sale.

With his exceptional density, highly aligned, high amplitude style, and carriage of positive traits right across his body, coupled with a commercial micron holding well on his 7th fleece, Jude Law offers an injection of white qualities into the grey breeding program.

With the unique-to-grey, elite white genetics of Royal Kahuna mixing with the length, density and longevity of traits from Hope Downs El Gordo and Morning Star Meriadoc, his quality and retention of positive attributes are absolutely no surprise.

With a large number of siblings and close relatives in use within the Precision herd, Jude Law has not had the workload a male of his calibre deserves. However, he has ensured to make his usage count ! Siring the heavily awarded Precision Dark Magic, a dark roan male who has taken the showing by storm coming home with age and colour championships at level 1 shows across Australia, including the 2024 National where he was Reserve Champion Intermediate Male behind the Supreme !



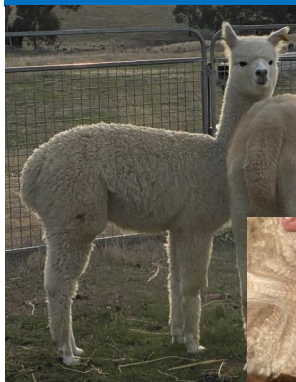
Progeny: Precision Dark Magic

Precision Alpacas—Reserved

Lot 42 Yenaminut Marigold

LF Female Huacaya

IAR: V02023 DOB: 10.12.24



Yenaminut Evokateur (SW)

Futura Western Warrior (SW)

Sire: Bardella Park Oblivion (SW)

Dam: Wildflower Manuka (SMF)

Bardella Park Amethyst (SW)

Wildflower Matilda (LF)

Mated: N/A

Fleece: Not shorn

Exhibiting a high frequency, high amplitude style, stunning brightness, a moreish handle, and a high degree of density on a well-grown, correct frame, this female has a big future ahead of her. Sired by Oblivion, an ultra-dense male (test at 121.7/mm) holding exceptional micron and SD (M20.2 SD3.3 on his 7th fleece) this female carries some of the most influential animals in Precision herd in her pedigree—Yenaminut Evokateur and Bardella Park Amethyst. On her dam's side she adds the exceptional qualities of Jolimont Warrior and Shanbrooke Elite. We expect with this power house pedigree that this female will hold her quality beautiful into her breeding career.

Precision Alpacas —Reserved

Lot 43 Yenaminut Ember

SMB Female Huacaya

IAR: V02037 DOB: 16.12.24



Surtierra Shadow (TB)

Shanbrooke Inferno (RG)

Sire: Pengarook Knight Shadow (TB)

Dam: Yenaminut Stylish Fire (SDF)

Pengarook Hope and Glory (SMB)

Evolution Stylish Miss (TB)

Mated: N/A

Fleece: Not Shorn

When you put your hand on Ember you cant help but appreciate her super silky handle. Getting into the fleece, she exhibits a high frequency style and couples her handle with brilliant brightness. She carries herself on a correct, true-to-type frame. Sire by Pengarook Knight Shadow, an exceptional black male still exhibiting an extremely showy, lustrous fleece at nearly 10 years of age and producing some of our top coloured cria. Her dam carries exceptional breeding including Hope Downs El Gordo and Shanbrooke Accoyo Shere Impact, as well as one of the best black we have seen, Aviana Farms Serenade.

Precision Alpacas —Reserved

Lot 44 Yenaminut Grand Allegra

TB Female Huacaya

IAR: V01880 DOB: 14.11.23



Millduck Stringy Bark (SDB)

Shanbrooke Grey Commander (MG)

Sire: Baringhup Austin (TB)

Dam: Yenaminut Grand Calling (SMB)

Camelot Merlin's Trick (SDB)

Goldleaf Grand Design (LB)

Mated: N/A

Fleece: M17.8 SD 3.9 CF 99.6 Trim On

Grand Allegra is a true blue black female carrying herself on a correct, upstanding frame, making her stand out in a crowd. When you get into that fleece, she is absolutely pumping it out, producing a whopping 130mm staple length on first fleece. She couples this with a high amplitude, bundling style, low micron and low presence of coarse fibres, and beautiful brightness. With a pedigree lined with Colourbration and National Champions and best of colours on both sides, her quality is absolutely no surprise, and we look forward to seeing what this female can produce.

Precision Alpacas —Reserved

Lot 45 Yenaminut First Dance + M/Cria	SMF Female Huacaya	IAR: 242600	DOB: 17.11.18
---------------------------------------	--------------------	-------------	---------------



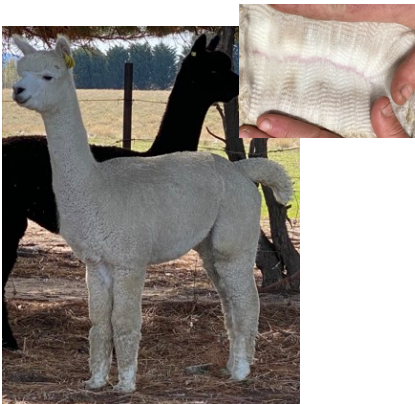
Precision Alpacas —Reserved

Cedar House Alaska (SW) Winsong Valley Amadeus (SW)
Sire: Bardella Park Kumar (SW) Dam: Yenaminut Nala (SLB)
Bardella Park Amethyst (SW) Rancho Pusterla Mina (TB)

Mated: LMD 06.04.25 Precision Pure Inspiration (SLF)

Fleece: M 22.3 SD 4.5 CF 94.9 Trim On
Holding a good level of fineness and ultra soft handle going onto her 7th fleece, and carrying it on a correct, typey frame, First Dance offers exciting quality in a heavily coloured pedigree. Her cria DOB 19.03.25 by Precision Pure Inspiration—a male with broad ribbons in both halter & fleece from right across Australia from 2022-2025 owing greatly to his exceptional density and ironed in style—is a pleasure to look at both in his fleece and his type. With a macho frame, superb density, ultra brightness and well-developed style already, plus a luxurious handle, he is one to watch in the show ring !

Lot 46 Precision Delight	SW Female Huacaya	IAR: V01940	DOB: 03.03.24
--------------------------	-------------------	-------------	---------------



Precision Alpacas —Reserved

Cedar House Alaska (SW) EP Cambridge Phenomenon (SW)
Sire: Bardella Park Kumar (SW) Dam: Yenaminut Delicious (SW)
Bardella Park Amethyst (SW) Yenaminut Delishionova (SW)

Mated: N/A

Fleece: M 16.3 SD 3.9 CF 100 Trim On
This female exudes presence, carrying herself on a compact, upstanding frame she knows how to make an impression ! When you get into that fleece it does not disappoint. Exhibiting a high frequency, highly aligned crimp style right across her frame and far into her brisket and extremities, coupling low micron, low presence of coarse fibres, a high degree of density and a super nourished handle. The fleece is ultra bright and exhibiting good length as well.
1st Junior White Female 2024 Charles Ledger

Lot 47 Bardella Park Justine	SMB Female Huacaya	IAR: 242633	DOB: 19.12.19
------------------------------	--------------------	-------------	---------------



Precision Alpacas —Reserved

Cedar House Alaska (SW) Mountain Eureka (TB)
Sire: Bardella Park Kumar (SW) Dam: Red Balloon Josephine (TB)
Bardella Park Amethyst (SW) Jolimont Majesta (SW)

Mated: LMD 04.05.25 Precision Pure Inspiration (SLF)

Fleece: M 20.7 SD 4.4 CF 96.7 Trim On
Set on an imposing, correct frame, Justine has fantastic presence in the paddock. Coupling a low micron, high frequency crimp style and super soft handle, she draws on some exceptional animals in her pedigree, with Josephine still being one of our most impressive black females at 11 years of age, and Kumar needing no introduction. She has already proven her exceptional production capabilities, giving us Bardella Park Augustine for her first cria, who took out some impressive ribbons on the 2024 show circuit. We chose to mate her to the highly awarded Pure Inspiration as his progeny with Kumar daughters have been of an elite leve, so we were excited too him into this genetic powerhouse mix.

Lot 48 Yenaminut Brontie ET

SW Female Huacaya

IAR: 233393 DOB: 21.03.22



Sire: EP Cambridge The Prodigy (SW)
EP Cambridge Phenomenon (SW)
EP Cambridge Padthaway (SW)

Dam: Blackgate Lodge Bronson (SW)
Merrijig Bermuda (SW)
Blackgate Lodge Bewitched (SW)

Mated: LMD 01.01.25 Bardella Park Kumar (SW)

Fleece: M 20.8 SD 4.7 CF 96.0 Trim On

With 2x full sisters in our top breeding program, her dam still breeding for us and, of course, her full brother being Precision Pure Inspiration who now has progeny on the ground as well, we have decided it is time to release one of the exceptional crosses that is Phenomenon to Bermuda to the public. The reliability of the match has been undeniable. Brontie herself offers a high degree of density and style, coupled with commercial micron and length on a correct, strong frame. She produced a male to Kumar as her first cria, and we were so impressed—and knowing that her full sister to Kumar has produced a National-level broad ribbon winner in the past—she naturally had to go back to him.

Precision Alpacas —Reserved

Lot 49 Humminghills Easter + M/Cria

WH/MF Female Huacaya

IAR: 250660 DOB: 13.04.21



Glenhope Griffin (SW) Forestglen Saxon (SW)

Sire: Glenhope Neon (SW) Dam: El Prado Ellen (SW)

Glenhope Higgledy (SW) El Prado El Modelo (LF)

Mated: LMD 17.02.25 to Appaloosa Clownfish

Fleece: M 24.7 SD 4.6 Trim Off

Easter is an excellent first-time mum with attractive, very moppy-fleeced MF male at foot (by Arc Gleam) Cria has a few DF spots so Easter is now pregnant to Champion Fancy Appaloosa Clownfish—chasing more spots !

Cria at foot is male Arcady Easy Peasy, MF, IAR 264629 DOB 25.01.25.

Arcadian is a CheQA herd #05/0091

Arcadian Alpacas —Reserved

Lot 50 Humminghills My Sherona + F/Cria

LF Female Huacaya

IAR: 250689 DOB: 19.04.22



Sire: Banksia Park KOK Naseeb ET (LF)
Jurustalle Schumann (SMF)
Jurustelle Adelaide (SMF)

Dam: Benleigh Lorimer (SW)
Surilana Sassenach (SW)
Valanya Esperance (SW)

Mated: LMD 04.05.25 to Appaloosa Clownfish

Fleece: M 23.6 SD 5.9 Trim On

Sherona is a perfect first-time mum with a vibrant LF female at foot by Champion Fancy Appaloosa Clownfish @ remated to him. We love this cria with her super-nourished fleece & sensible, outgoing personality—she also has a few MF marks !

Cria at foot is Appaloosa CF Sherbet, LF IAR 264605 DOB 10.04.25.

Arcadian is a CheQA herd # 05/0

Arcadian Alpacas —Reserved

Lot 51 Calabash Pia

SW Female Huacaya

IAR: 227422 DOB: 16.01.21



Calabash Alpacas —Unreserved

Curumbong Golding (SW) Cedar House Tijera Hugo (SW)
 Sire: Calabash Jeremiah (SLF) Dam: Calabash Guinevere (SW)
 Calabash Europa (SW) Calabash Dominica (SW)

Mated: LMD 02.02.25 Lillyfield Mojave

Fleece: M 24.9 SD 4.3 CF 91.4 Trim On

Pia comes with hard to find genetics. Curumbong Golding on her sire's side and Cedar House Tijeera Hugo on her dam's side.

Mated in February 25 to Lillyfield Mojave who provides Warrior genetics on his sire's side. Mojave was chosen to compliment Pia's pedigree. She is easy to handle and would be a good addition to any herd.

Lot 52 Calabash Michiko

SW Female Huacaya

IAR: 227417 DOB: 29.07.17



Calabash Alpacas —Unreserved

Andean Park Ringmaster Cedar House Dublin (SW)
 Sire: Kankinya Ridge Ballinger (SW) Dam: Calabash Bunny (SW)
 Kankinya Ridge Upper Class (SMF) Calabash Yandina (SLF)

Mated: LMD 06.02.25 Lillyfield Mojave

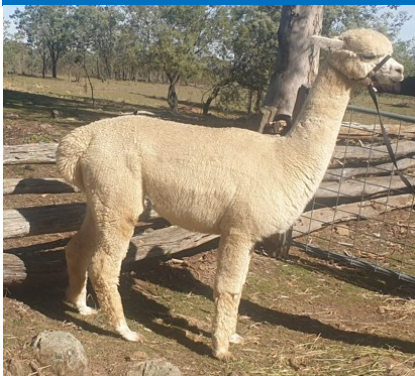
Fleece: M 25.7 SD 4.7 CF 86.5 Trim On

Michiko is well grown female with a large frame and a proven mother to her crias. Strong genetics with Ringmaster and Ruffo on her sire side, Peruvian Ayavari and Ladysmith Absolute Lad on her dams side. Mated in February 25 to Lillyfield Mojave, currently holding pregnancy when tested in May 25.

Lot 53 Calabash Roweena

SW Female Huacaya

IAR: 227429 DOB: 01.04.23



Calabash Alpacas —Reserved

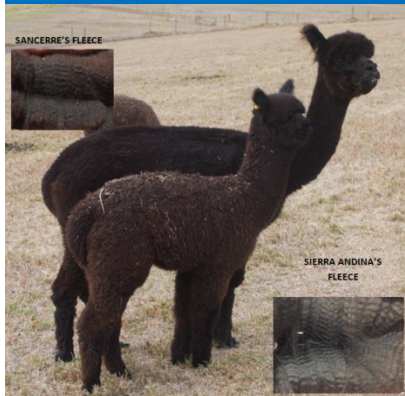
Curumbong Golding (SW) Curumbong Flash (SW)
 Sire: Calabash Jeremiah (SLF) Dam: Calabash Kiandra (SDF)
 Calabash Europa (SW) Calabash Guinevere (SW)

Mated: LMD 21.02.25 Lillyfield Mojave

Fleece: M 20.5 SD 3.7 CF 98.5 Trim On

Roweena is a fully grown female with a large frame and gentle nature. First in her class at the 2025 Gunning Show. Impressive genetics include Curumbong Golding on the sire's side. Curumbong Flash and Cedar House Tijera Hugo on her dam's side. Her fleece test results show low micron and Lillyfield Mojave who brings Warrior genetics. Roweena was last tested in May and shown to be pregnant.

Lot 54 Chaparral Sancerre + F/Cria	TB Female Huacaya	IAR:	V00030	DOB:	21.03.16
------------------------------------	-------------------	------	--------	------	----------



Camelot Tor (SW)	ILR PPPeruvian Auzengate 6010 (SW)
Sire: Chaparral Victory (MB)	Dam: Chaparral Sangria (SLBr)
Chaparral Chicha (SMF)	Chaparral Black Velvet (TB)

Mated: LMD 03.05.25 Chaparral Smoky Martini (SLF)
Fleece: M 27.7 SD 5.0 CV 17.9 CRV 33.3 Trim On

Chaparral Sancerre, sired by Chaparral Victory, son of Camelot Tor who needs no introduction to the alpaca industry. These genetics will be an asset to any breeder. She is mated to Chaparral Smoky Martini, his fleece won junior champion fleece in the National Fleece Challenge beating 96 & also taking out Best Light Fawn at 5 yrs of age.

Sierra Andina (cria at foot) sire by Baringhup The Wizard who is a solid black & sire of multiple broad and blue ribbons. She will be an asset to any breeder as her fleece is showing all the qualities you'd like in your breeding programme.

Chaparral Alpacas —Reserved

Lot 55 Chaparral Ratafia + F/Cria	SDBr Female Huacaya	IAR:	V00051	DOB:	27.03.22
-----------------------------------	---------------------	------	--------	------	----------



Camelot Tor (SW)	Chaparral Harlem (MBr)
Sire: Chaparral Victory (MB)	Dam: Chaparral Rakija (LBr)
Chaparral Chicha (SMF)	Chaparral Bailey (SDF)

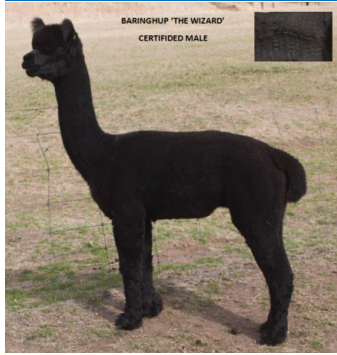
Mated: LMD 01.05.25 Chaparral Smoky Martini (SLF)
Fleece: M 23.4 SD 4.8 CV 20.5 CRV 30.3 Trim On

Chaparral Ratafia, sired by Chaparral Victory, son of Camelot Tor who needs no introduction to the alpaca industry. These genetics will be an asset to any breeder. She is mated to Chaparral Smoky Martini, his fleece won junior champion fleece in the National Fleece Challenge beating 96 & also taking out Best Light Fawn at 5 yrs of age.

Raymi (cria at foot) sire by Baringhup The Wizard who is a solid black & sire of multiple broad and blue ribbons an asset to any breeder as her fleece is showing all the qualities you'd like in your breeding programme.

Chaparral Alpacas —Reserved

Lot 56 Baringhup The Wizard	TB Certified Male Huacaya	IAR:	198069	DOB:	14.04.15
-----------------------------	---------------------------	------	--------	------	----------



Millduck Mandela (TB)	Windsong Valley Firedragon
Sire: Baringhup Toscanini (TB)	Dam: Camelot Merlin's Trick (SDB)
Millduck Miss Daisy (MF)	Camelot Merlin's Treasure (SLB)

Fleece: M 23.2 SD 5.1 Cf 91.3 CRV 54.3 Trim On

It is with a sad heart that Chaparral & Haylilla Alpacas have decided to sell 'Baringhup The Wizard' Let the wizard work his magic in your black, grey and coloured breeding programme as he has done at Chaparral & Haylilla. His fleece is blue black, his personality charming & ability to impart superb fleece characteristics is proven. With a collection of Champion progeny now siring the next generation, we are able to release these exceptional genetics. Notable progeny include—**Chaparral Smoky Martini**—still retaining a super fine fleece at 5 yrs. **Chaparral Illegal Tender** Best Grey at National Show in Adelaide. **Haylilla Sharp Dressed Man** shown successfully at National level & progeny were awarded Best Black Male & Female at Sydney Royal Show 2025

Chaparral Alpacas —Reserved

Lot 57 Haylilla Shiloh

TB Female Huacaya

IAR: 247254 DOB: 02.03.20



Erehwon Silverado (RG)

Ambersun Chaparral Peruvian
Cortez (TB)

Sire: Leaenna Armani (TB)

Dam: Chaparral Sheridan (BB)

Leaenna Blush (RG)

Chaparral Martini (SMF)

Mated: N/A

Fleece: M 26.2 SD 4.7 CRV 31.9 Trim On

An attractive female with great substance of bone.

Shiloh is a full sister to Haylilla The Dark Side (certified stud male) owned by EP Cambridge Alpacas.

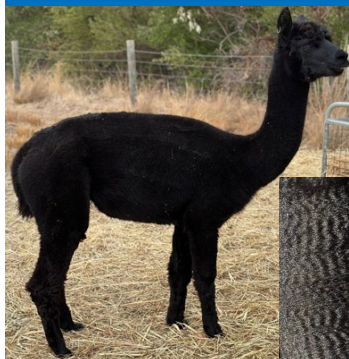
Her fleece density and coverage are a hallmark of her sire Leaenna Armani.

Haylilla Alpacas —Reserved

Lot 58 Haylilla Hula

TB Female Huacaya

IAR: 235872 DOB: 28.03.19



Baringhup Toscanini (TB)

Jolimont Tiberio (MG)

Sire: Baringhup The Wizard (TB)

Dam: Jolimont Humilia (TB)

Camelot Merlin's Trick
(SDBr)

Jolimont Riva (TB)

Mated: LMD 27.04.25 EP Cambridge Black Dragon (TB)

Fleece: M 24.6 SD 4.4 CRV 38.1 Trim On

A well grown blue-black female, with a calm demeanour.

Hula exhibits an abundance of bright, soft handling fleece with a pleasing uniformity of alignment.

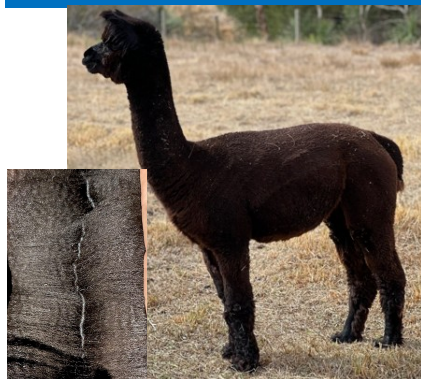
Progeny from the pairing, with EP Cambridge Black Dragon would benefit from his compact conformation and fleece fineness.

Haylilla Alpacas —Reserved

Lot 59 Haylilla Emerald City

BB Female Huacaya

IAR: 249724 DOB: 26.04.21



Baringhup Toscanini (TB)

Coonawarra Gladiator (BB)

Sire: Baringhup The Wizard (TB)

Dam: Classic Yaringa Empress ET (BB)

Camelot Merlin's Trick
(SDBr)

Alpacaspecialist Dynasty (SMF)

Mated: LMD 27.04.25 Haylilla Bespoke (TB)

Fleece: M 20.4 SD 4.5 CRV 35.6 Trim On

Emerald City displays 'paddock presence' with a great frame and a friendly, inquisitive nature.

Her heavy cutting fleece is buttery-soft with a uniform low micron.

The mating to Haylilla Bespoke (colour tested EEaa) should produce a dark cria, with improved fleece organization.

Haylilla Alpacas —Reserved

Lot 60 Haylilla Ethereal

Appaloosa Cert Male

IAR: 247260 DOB: 09.03.20



Haylilla Alpacas —Reserved

Erehwon Silverado (RG)

Coonawarra Gladiator (BB)

Sire: Leaenna Armani (TB)

Dam: Haylilla Bliss (BB)

Leaenna Blush (RG)

Jolimont Chandra (LF)

Fleece: M 20.2 SD 4.0 CRV 47.7 Trim On

Unique harlequin leopard appaloosa coat pattern with proven capacity to pass on the leopard appaloosa gene.

Ethereal has a strong, correct frame with a beautiful temperament.

His fleece has excellent density, a well-defined structure and retains fineness with age.

Full brother to Haylilla Intuition (certified stud male) owned by EP Cambridge Alpacas & Harvey Brown.

Lot 61 Haylilla Hummingbird

TB Female Huacaya

IAR: 235809 DOB: 11.02.18



Haylilla Alpacas —Reserved

Erehwon Silverado (RG)

Jolimont Tiberio (MG)

Sire: Leaenna Armani (TB)

Dam: Jolimont Humilia (TB)

Leaenna Blush (RG)

Jolimont Riva (TB)

Mated: LMD 27.04.25 EP Cambridge Black Dragon (TB)

Fleece: M 23.0 SD 3.9 CRV 38.0 Trim On

Hummingbird has a gentle nature, true-to-type frame and luxurious fleece attributes. She has one white spot on her neck and in 2020 produced a distinctive leopard appaloosa cria when mated to a solid white. Full sister to Haylilla Little Black Dress, these bloodlines have produced some outstanding true black huacaya progeny. Hummingbird has been remated to EP Cambridge Black Dragon, this pairing in 2024 produced a stunning blue-black male.

EPC Black Dragon most recent 10th fleece M 21.7 SD 4.7 CRV 39.8

Lot 62 Haylilla Mumm

BB Female Huacaya

IAR: 235828 DOB: 17.03.18



Haylilla Alpacas —Reserved

Baringhup Toscanini (TB)

Leaenna Armani (TB)

Sire: Baringhup The Wizard (TB)

Dam: Haylilla Chandon (SMF)

Camelot Merlin's Trick (SDBr)

Jolimont Chandra (LF)

Mated: N/A

Fleece: M 25.8 SD 4.9 CRV 39.9 Trim On

A friendly female with a well-proportion frame and striking good looks.

Mumm's fleece is highly organised with great density.

She has the triple-treat combination of reliable show-winning genetics with Baringhup The Wizard, Leaenna Armani and Jolimont Tiberio in her background.

Lot 63 Haylilla Bombshell + F/Cria

MG Female Huacaya

IAR: 235817 DOB: 23.02.18



Chilean Sire

Daltondale Maverick (SDF)

Sire: Jolimont Tiberio (MG)

Dam: Haylilla Bonnie (TB)

Chilean Dam

Stansbury's Ebony (SDBr)

Mated: N/A

Fleece: M 24.8 SD 4.7 CRV 36.8 Trim On

Bombshell is a conformationally correct female with an easy going nature. Her soft handling fleece is lustrous and organised. Her previous grey female cria is being retained in our herd.

Current grey female cria at foot DOB 19.03.25 was sired by Baringhup Austin—Haylilla Belleza NLIS W00183

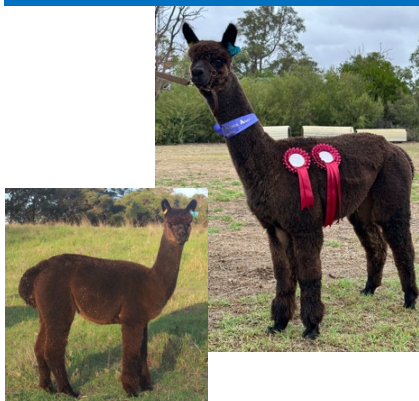


Haylilla Alpacas —Reserved

Lot 64 Goldleaf Goddess Nyx

Rn Female Huacaya

IAR: U00577 DOB: 01.12.23



EP Cambridge King Slayer (TB)

Taylor's Zuka (SMF)

Sire: EP Cambridge The Ferryman (TB)

Dam: Alcatraz Medusa (SMF)

EP Cambridge Fire Bird (SMF)

Futura Pzazz (SMF)

Mated: LMD 08.02.25 EP Cambridge Moonraker (MG)

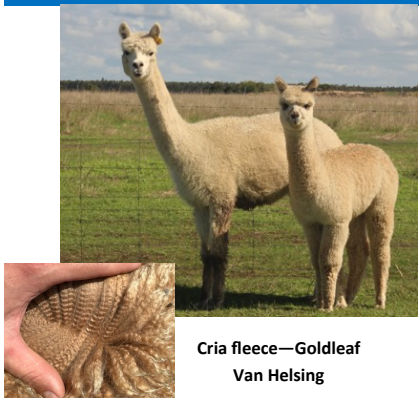
Presenting for sale a high calibre female already proven in the show ring, winning Supreme Champion Roan, WA Colourbration 2025. Silver flecks throughout her dark base colour. Very even and well aligned style to her fleece. Nyx has a high frequency crimp tip to base. Demonstrates a level of density and fineness representative of her exceptional genetics. Mated to top grey sire, EP Cambridge Moonraker, her cria will present as a unique combination of genetics for the coloured herd.

Goldleaf Alpacas —Reserved

Lot 65 Goldleaf Brides Maid + M/Cria

MF Female Huacaya

IAR: 246508 DOB: 19.02.21



Suncloud Kinetic (SW)

Faversham Armani (LF)

Sire: Sundcloud Juanchito (SW)

Dam: Goldleaf Aztec Maid (LF)

Peaceful Waters Femme (SW)

Peppermint Pool Celeste (SW)

Mated: LMD 11.01.25 Windella Goldleaf Trussardi (TB)

Fleece: M 20.1 SD 4.6 SL 90 1.18kg skirted Trim On

Proven easy breeder with cria at foot Goldleaf Van Helsing (SDF). Brides Maid is rated as a breeding female due to her low primary fibre. She has held on to her ultra soft handling fleece, with a high frequency crimp style as she matures. Performing well in the coloured breeding program, Brides Maid has bred two very nice fawn males to Ferryman. Would have liked to retain a black daughter from her at stud keeping the consistency of the Juanchito/Armani blend of genetics but also wanted to offer calibre stock at auction with confidence that they will breed on well.

Cria fleece—Goldleaf
Van Helsing

Goldleaf Alpacas —Reserved

Lot 66 Goldleaf Swish Speckle

DF Female Suri

IAR: U00643

DOB: 10.12.24



ILR Sierra Bonita's The Bachelor (TB)
Sire: Baarrooka TB Duke Street King (TB)
Baarrooka Empress (TB)

ILR Caar Amstel (LF/MDF)

Dam: Baarrooka 41 Spots (Apps)

Baarrooka American Skin (LG/LBr)

Mated: N/A

Fleece: N/A

Speckle has multiple spots throughout her fleece, with lots more dark spots on her face & underside. Registered as appaloosa and well bred from spotted genetics on her dam's side, she would suit an adventurous suri breeder looking to take her markings and genetics to the next level. Very well organised locks, with markers of sound combination of fineness and density for her future. Speckle is well grown for her age and would present well in the show ring, she is halter trained.

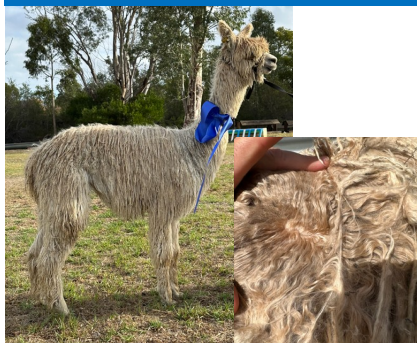
Goldleaf Alpacas —Reserved

Lot 67 Goldleaf Swish Peony

MF Female Suri

IAR: U00637

DOB: 28.07.24



Baarrooka Durango's Foreign Affair (LBr)

Baarrooka Thundercrack (SLF)

Sire: Baarrooka FA Lisbon ET (DF)

Dam: Baarrooka Y10 (SMF)

Baarroka Lumina (SW)

Bumble Hill Indian Rose (SW)

Mated: N/A

Fleece: N/A

Superfine young suri female with a lovely temperament. Very lustrous fleece, with tiny lock formations through to the skin. Colour tested to be the same colour genetics as her mum, eeaa, ensuring she can be useful for any suri breeding program, including black. Peony's genetics are some of the best in Australia, and is sired by one of the best, the 2019 National Supreme Champion. The stud is able to release genetics of this calibre as her grandsire Baarrooka Durango's Foreign Affair has joined the stud & continues to prove the prepotency of the line with consistent quality cria.

1st place Junior Female M/D Fawn Suri
WA Colourbration 2025

Goldleaf Alpacas —Reserved

Lot 68 Hidden Gem Freyja

SMB Female Huacaya

IAR: 257842

DOB: 06.03.24



Majestica Obsidian (TB)

Elsendale Fernando (MF)

Sire: The Majestic Tattoo (Apps)

Dam: Elsendale Fancy Girl (W/MB)

The Majestic Wildfire (W/DF)

Elsendale Gina (W/DF)

Mated: N/A

Fleece: M 15.9 SD 5.9 CF 97 CRV 44.9 Trim Off

A gorgeous little mid brown girl with darker points whom I expect to roan out. I expect this will extend as she matures. I also anticipate that Freyja should maintain excellent long term fineness as her dam is M 24.5 on her 13th fleece, her sire is still only M 21 on his 10th fleece whilst an older sibling is M 22.4 on her 9th fleece.

Freyja is halter trained.

A very reasonable reserve has been set for this lovely little lady.

Hidden Gem —Reserved

Lot 69 Elsendale Fancy Girl

Fancy Female Huacaya

IAR: 147319 DOB: 28.03.12



Benleigh Lorimer (SW)

Blue Grass Wolfgang (SW)

Sire: Elsendale Fernando (SMF)

Dam: Elsendale Gina (W/DF)

Alpacapena Fantasia (RG)

Orrapooru Hurdy-Gurdy (MB/W)

Mated: LMD 21.04.25 Green Gully Apache (FWT/LB)

Fleece: M 24.5 SD 5.7 CF 87.7 CRV 35.6 Trim Off

Fancy, as her name suggests, has a large mid brown rump patch and partial "sash" over her right shoulder with a myriad of mid brown spots throughout the white areas of her fleece. She produces both fancy and solid coloured cria. She has very respectable fleece stats for her age. Fancy has been mated to the equally gorgeous fancy male, Green Gully Apache who has highly respectable fleece stats for a working male 2024: M 22.5 SD 5.7 CF 94.2 CRV 54.8 11th fleece.

Hidden Gem —Reserved

Lot 70 Saints Park Calypso

MB/W Female Huacaya

IAR: 178939 DOB: 04.05.14



Blackgate Lodge Snowmaster (LF)

Belgrave Park (SDF)

Sire: Combe Hill Sulimon (SW)

Dam: Solid Rock Sunset Dreamer TW

Combe Hill Serenity (SW)

Atuputu April Gold (MF)

Mated: N/A

Fleece: M 31.7 SD 6.3 CRV 35 Trim Off

Calling all Grey Breeders

An interesting girl who has not been bred by me due to change of colour direction as she has nearly 40% grey and black in her background and some 26% of that is ROSE GREY ! Her dam, in her younger days, caused quite a stir in the show ring with her unusual almost iridescent "mushroom pink" colouring. Not the best of stats for her age, but with the "right" boy could throw something spectacular— maybe another elusive "pink" rose grey just like her dam.

Hidden Gem —Unreserved

Lot 71 The Andes Moonstone 40

LB Female Huacaya

IAR: 214478 DOB: 21.03.16



Eldorado Lucky (SW)

The Andes Lotus (SW)

Sire: The Andes Buzzer (SW)

Dam: The Andes Moonstone 27th (MF)

The Andes Sno Princess 4th (SW)

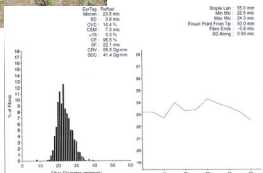
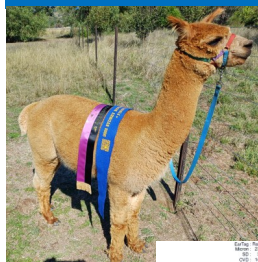
The Andes Moonstone 3rd (MF)

Mated: LMD TBC Congarinni Downs Kerrie

Fleece: M 25.2 SD 5.9 CF 83.9 CRV 36.1 Trim Off

Moonstone 40 (aka Glow) is a more compact girl whose fleece has maintained a consistent Medium grade fleece since her second shearing. She has been mated to a rare mid-brown son of Camelot Tor with the expectation that this will bring some more consistent fineness into her progeny. (Kerrie is maintaining a fabulous M 21.5 SD 4.2 CF 96 CRV 43.6 13th fleece at 2024 shearing.

Hidden Gem —Unreserved



Hidden Gem —Reserved

Blackgate Lodge Snowmas- ter (LF)

Belgrave Park Michelangelo
(SDF)

Sire: Combe Hill Sulimon (SW)

Dam: Solid Rock Sunset Dreamer TW

Combe Hill Serenity (SW)

Atuputu April Gold (MF)

Fleece: M 23.5 SD 3.9 CF 95.5 CRV 55.5 Trim Off

Whilst Raf has had a very limited show career he has walked away with Reserve Championships in both halther & fleece. He has fabulous stats for a working male on his 6th fleece with density to “burn” and crimp that’s been consistent since his first shearing. Raf is nearly 50% genetically white (5th Gen) and this is what he is throwing irrespective of the dam’s colour—unfortunate for me (a colour aficionado) but this could be very fortunate for the astute buyer. Raf passes his fabulous fleece characteristics on to his cria.

A very reasonable reserve has been set for this quality male.

Delivering Traceability in the Australian Alpaca Industry

Industry trailblazers are committing to improved traceability and biosecurity by voluntarily adding their alpacas to the National Livestock Identification System (NLIS).

Thank you to everyone who completed the NLIS research survey. The valuable information you provided is helping develop vital tools and resources to help all alpaca owners understand and be part of the NLIS.

Have you considered becoming a NLIS Champion?

The Champion packs will have useful resources to support the local alpaca networks and help your customers understand what the NLIS is all about.

The packs will be launched at the AAA National Show in August 2025. If you would like to pre-register to collect a pack at the Show, please email annemarie@alpaca.asn.au

This project is funded by the *Department of Agriculture, Fisheries and Forestry* through the Livestock and Animal Traceability Development, Implementation, and Improvement Grant Program.



Breeders Details

Alpha Centauri Alpacas

69 Robinson Road, Warrenbayne VIC 3670

Pic: 3BEFK059

Arcadian Alpacas

361 Native Avene, Wistow, SA 5251

Pic: SB430387

Calabash Alpacas

162 Wanna Wanna Road, Queanbeyan, NSW 2620

Pic: NB0883233

Chaparral Alpacas

106 Kenny Road, Hindmarsh Valley, SA 5211

Pic: SA479146

Eaglewood Alpacas

156 Isabel Dr, Murrumbateman. NSW 2582

Pic: NG622849

Forestglen Alpacas

381 Vittoria Road, Millthorpe, NSW 2798

Pic: NB044357

Goldleaf Alpacas

PO Box 5230 Albany, WA, 6332

Pic: WAAY2355

Haylilla Alpacas

59 Brunato Road, Blewitt Springs, SA 5171

Pic: SB450150

Hidden Gems

43 Saints Lane, St Fillans, NSW 2850

Pic: NI434649

Janella Alpacas

18 Graham Road, Blayney, NSW 2799

Pic: NG048840

Bronwyn Munn

M: 0408 410 280

E: info@acalpacas.com

Denis Moysey

P: 08 8391 3270

E: denisemoysey@gmail.com

David Grey

P: 0409 613 253

E: davidegrey@gmail.com

Mark Short & Deirdre Finlay

P: 0418 818 655

E: chaparral6@bigpond.com

Robert Harborne

M: 0417 998 897

E: rharborne3@bigpond.com

Jennifer Carey & Alex Staples

M: 0487 227 068

E: info.forestglen@gmail.com

Brett Fallon

M: 0408 403 910

E: info@goldleafalpaca.com.au

Ruth & Steve Goodfellow

M: 0419 597 998

E: Haylilla@outlook.com

Vicky Luhrs

M: 0425 366 460

E: Vicky.luhrs@bigpond.com

Jane Merison & Lesley Archer

M: 0419 484 589

E: kahibah@activ8.net.au

Breeders Details

Lillyfield Alpacas

69 Graces Flat Road, Bowning, NSW 2582

Pic: NH622680

Mapa/Survival Alpacas

2764 Yass River Road, Yass River, NSW 2582

Pic: NC623764

Otway Orchard Alpacas

205 Robinson Road, Barongarook, VIC 3249

Pic: 3CLMU166

Precision Alpaca Group

39 Budds Lane, Baynton, VIC 3444

Pic: 3MRAF016

Rockleigh Alpacas

33 Mills Road, Kanmantoo, SA 5252

Pic: SB272809

Silcron Alpacas

54 Red Hill Road, Bowning, NSW 2582

Pic: ND623416

Tiyata Alpacas

5 Yellowlea Court, Oakey, QLD 4401

Pic: QGRA0820

Wedgetail Rise Alpacas

49 Quinlans Road, Verona, NSW 2550

Pic: NG233157

Carolyn Austin

M: 0410 693 802

E: lillyfield@bigpond.com

Paul Maslen

M: 0417 862 096

E: sales@mapaalpacas.com.au

Darren & Claire Balboni

P: 03 5235 8474

E: otwayorchard@gmail.com

Max & Taryn Mathews

M: 0417 845 480

E: precisionalpaca@gmail.com

Stephanie & Simon Carter

M: 0413 344 380

E: rockleighalpacos@gmail.com

Di Bulpit

M: 0414 447 178

E: dianebulpit@gmail.com

Hayden Berlin

M: 0439 611 115

E: haydenberlin@outlook.com

Annemarie Ashton-Wyatt

M: 0409 227 737

E: annemarieashton@hotmail.com

Australian Alpaca Assoc Members Auction

Auction—Saturday 26th July 2025

Mail : Paul Maslen

Australian Alpaca Association

POSTAGE

PAID

AUSTRALIA