

# **Breeders Choice**

## **Alpaca Auction**

**Saturday 22nd July 2023**

**12 Noon**

**Online @ [www.auctionsplus.com.au](http://www.auctionsplus.com.au)**

***National Alpaca Sale***

***Stud & Commercial***

***Genetics Plus***

***11th Annual***



**Contact Agent:**

**Nutrien Livestock**

**Wilson Beer: 0428 505 520**



**Australian Alpaca**  
ASSOCIATION

## Information for Buyers

**AUCTION START:** Saturday 22nd July 2023 Auction –12.00 (noon)

**INSPECTIONS:** By Arrangements with Vendors Prior to Auction or on Sale Day. See Vendors Facebook, Web sites etc. for Open Days. Some Vendors may have selected lots at 'Christmas Carnival Of Colour' Show 1st & 2nd July @ Goulburn Showground, check with convenor of show prior.

**REGISTRATION:** All prospective buyers must register with Auctions Plus by Thursday 10th July. Terms as per Nutrien / AuctionsPlus. Ph: 02 9262 4222. [www.auctionsplus.com.au](http://www.auctionsplus.com.au)

**DELIVERY:** Alpacas may remain up to 4 weeks free of charge at Vendors property, or by arrangement.

**TRANSPORT:** Buyers should make their own transport arrangements prior to the auction.

**INSURANCE:** Buyers please arrange own insurance contract prior to sale day.

**HEALTH:** As Per Vendors. Refer to Page 5 & 6.

**AAA TRANSFERS:** All animal transfers with the AAA will be at the purchasers cost.

**STATE HEALTH PROTOCOL:** Buyers, please ensure that you are aware of the necessary State Health Protocol required at the destination of your purchase.

**OPENING BIDS:** Minimum opening bid applies: Single Lots—\$600.00; Females with Female Cria at Foot—\$1,000.00; Females with Male Cria at Foot—\$800.00. Reserved Lots—Opening bid will vary.

**TERMS & CONDITIONS:** All stock is offered under standard terms and conditions. These are available from the Agent, Nutrien. GST will be charged on top of bid price i.e. \$1500 + \$150 GST = \$1,650.00

**TERMS OF PAYMENT:** Terms of payment are EFT at time of purchase on Invoice. In accordance with the conditions of sale. For further information contact Nutrien : Wilson Beer 0428 505 520.

**BUYING ORDERS, TELEPHONE BIDDING:** Buyers orders can be placed with Nutrien prior to Auction day. Telephone Bidding, available for both national and international. Buying Orders will be handled By Wilson Beer 0428 505 520.

**CATALOGUES:** All details in this catalogue are provided by the Vendors and whilst all care has been taken in their preparation Nutrien Livestock & Hunter Alpacas accept no responsibility for errors or mis-descriptions herein. Catalogues are available from Nutrien, or online Nutrien & AuctionsPlus.

**VENDORS:** Details on Page 5 & 6.

**Wilson Beer:** 0428 505 520 E: [wilsonbeer@bigpond.com](mailto:wilsonbeer@bigpond.com)

**Tim Woodham:** 0436 015 115

**Peter Godbolt:** 0457 591 929



# Breeders Choice Alpaca Auction

*Since 2013*

**Welcome** to the 11th annual **Breeders Choice Alpaca Auction**— an annual event not to be missed on the Australian Alpaca Calendar. This year our Alpaca Vendors decided, after the very successful online auction of 2020, to once again hold an online auction. Covid altered our lives and brought about many changes, not all bad, so lets proceed with the 3rd BCAA **“online auction”**!

Access the most unique array of animals from the comfort & convenience of your own home. As a buyer you have access to a diversified range of Alpacas all in one convenient location like never before!

Think of the variety in genetics, the range of fleeces & styles, and the different coloured selections which will make complementary additions to your herd. Perfect options for the new breeder or experienced breeder. There is something for everyone on offer at this auction.

**We welcome Vendors from WA, SA, Vic, NSW, QLD, ACT & UK at this National— International Event.**

**28 Breeders have especially selected for auction, a total of 82 Lots.  
Huacaya and Suri genetics are offered for sale.**

These Breeders, all active participants in the Australian Alpaca Industry, represent a community of people who are passionate about what they do and wish to share this passion and support others in the industry, new or old breeders. **BCAA offers everyone an ideal opportunity to purchase sought after genetics at reasonable prices.** Make sure you don't miss an important opportunity such as this!

Vendors have presented for your consideration **unreserved lots and other lots with very sensible reserves.** You will find everything from diversified genetics with quality fleece production, White to Black and some with spots, beautiful temperaments, stud sires & potential stud sires, 3-in-1 packages, established breeding females and everything in between.

**Join the vendors & breeders on sale day, online.  
All lots are open for bidding simultaneously or pre-bid.**

**Pre-inspect the alpacas (see note on Page 4 ) prior to auction day. Contact Vendors and inspect alpacas on farm or at an event, meet someone new, chat with old friends, learn something new and make some exciting alpaca purchases.**

**Strengthen & Reinforce your Breeding. Select & Expand your Bloodlines .**

**“Be assured these alpacas are presented to sell at this auction.”**

## Online Auction

**Register with AuctionsPlus:** Buyers must complete Full Registration in order to bid/buy.

**Auction Site / Location:** Your own home, office, lounge room. Or wherever you may be at auction time. **12 noon, 22nd July 2023.**

**Alpaca Inspections:** Vendors Farms, live video chat with vendors, facetime etc. Discuss your options with vendors. Christmas Carnival of Colour: 10th & 11th July @ Goulburn.

**Photos:** Extra and larger photos posted online at Auctions Plus. Vendors Web Sites & Facebook Pages. There will extra photos to include teeth / legs etc.

**Videos:** AuctionsPlus, Facebook. Ask a vendor direct for what you require—facetime an alpaca.

**Fleece Samples:** Request vendors to post samples.

**Farm Visits:** Inspect Alpacas yourself or ask a friend.

**Contact Vendors & Ask Questions:** See Vendor details page 5 & 6

**Delivery of Alpacas:** All vendors will allow alpacas to remain on farm up to 4 weeks free. If you require additional agistment or additional time for collection, please contact vendors as they are very open to making suitable arrangements.



# AuctionsPlus

*Buy and Sell stock nationally*

## On-Line via AuctionsPlus — Bid! Bid! Bid!

1. Online—Day of Auction Sat. 22nd July or Pre Bid
2. Phone Bidding or Buying Order – Arranged with Wilson by Thursday 10th July
3. On-Line via AuctionsPlus — Must Pre-Register by Thursday 10th July

### To Pre Register with AuctionsPlus -

1. Go to [www.auctionsplus.com.au](http://www.auctionsplus.com.au) and signup. Complete Full Registration
2. Enter your info and confirm your email address
3. NOTE: You need to have FULL approval to Buy/Sell (Approval may take 24-48 hours). Contact: 02 9262 4222 for further information & assistance

**Nutrien Livestock, Agent :** Wilson Beer 0428 505 520 e: [wilsonbeer@bigpond.com](mailto:wilsonbeer@bigpond.com)

<https://auctionsplus.com.au/auctions/other/bcaa-breeders-choice-alpaca-auction/120512>



**Alcatraz Alpacos** (Non-Assessed)

33 Weir Road, Baskerville WA 6056

Pic: WBSN1916

**Ambersun Alpacos** (Non-Assessed)

2721 Victor Harbour Road, Mt Compass, SA 5210

PO Box 596, Mt Compass, SA 5210

Pic: SB450281

**Arcadian Alpacos** (Non-Assessed)

361 Native Avenue, Wistow, SA 5251

PO Box 784 Mt Barker, SA 5251

Pic: SB430387

**Boolaroo Alpacos** (Non-Assessed)

PO Box 501 Warragul, VIC 3820

Pic: 3MGBL340

**Buckland Alpacos** (Non-Assessed)

419 Shepherds Hill Road, Lauriston VIC 3444

Pic: 3MRFP105

**Sarah Golding & Tim Williams** (Non-Assessed)

1/2268 Romsey Road, Romsey VIC 3434

5 Driftwood Close, Seabrook VIC 3028

Pic: 3MRDH580

**Eaglewood Alpacos** (Non-Assessed)

156 Isabel Dr, Murrumbateman. NSW 2582

Pic: NG622849

**EP Cambridge Alpaca Stud** (Non-Assessed)

PO Box 261, Balhannah SA 5242

173 Martins Rd, Oakbank SA 5243

Pic: SB420752

**Goldview Alpaca Stud** (Non-Assessed)

433 Fairy Hole Road, Bango NSW 2582

Pic: NJ621542

**Gunnamatta Stud Alpacos** (Non-Assessed)

16 Mansfield Road, Galston NSW 2159

Pic: NG463155

**Jandarra** (Q—06/0202)

142 Woodlands Ln, Bald Hills NSW 2549

Pic: NI232406

**Kurrawa Alpacos** (Q-05/0018)

1330 Angelesea Road, Bellbrae VIC 3228

Pic: 3SFRA014

**Lemaca** (Non –Assessed)

39 Yendon to Egerton Road, Yendon Vic 3352

PO Box 370 Ballan VIC 3342

Pic: 3MBNG196

**Lillyfield Alpacos** (Non-Assessed)

PO Bos 2051, Bowning NSW 2582

69 Graces Flat Road, Bowning NSW 2582

Pic: NH622680

**Denise and Dan Durrant**

Mob: 0417 187 916

E: denise@alcatrazalpacos.com

www.alcatrazalpacos.com

**Adrienne Clarke**

Mob: 0418 836 157

E: chris@ambersunalpacas.com

www.ambersunalpacas.com

**Denis Moysey**

P: 08 8391 3270

E: denise@arcadian-alpacas.com.au

**Tammy Attenborough**

Mob: 0476 231 656

E: boolaroosuri@gmail.com

**Keith Wadsworth & Liz Robinson**

M: 0407 859 563/ M: 0417 676 822

E: chestnut@netc.net.au

**Charlie Golding**

Mob: 0432 630 588

E: Charlie@totalhydrographic.com.au

**Robert Harborne**

Mob: 0417 998 897

E: info@eaglewood.com.au

**Matthew & Catherine Lloyd /Lawrence**

P: 08 8389 7199 Mob: 0417 828 753

E: lawrence@alpacastud.com.au

www.epcambridgealpacos.com

**Abby Gold**

M: 0431 709 771

E: abby@goldviewalpacos.com.au

**Sue Maynard & John Hay**

P: 02 9653 2277 Mob: 0490 302 556

E: alpacos@tpg.com.au

www.gunnamattastud.com.au

**Robert Crewe**

Mob: 0428 598 324

E: jandarra1@optusnet.com.au

**Ann & Natasha Clark**

P: 03 5261 3714 Mob: 0412 960 200

E: kurrawa@ozemail.com.au

www.kurrawa.com.au

**Leanne Smith**

Mob: 0421 285 240

E: lourmal@optusnet.com.au

**Carolyn Austin**

Ph: 02 6227 6224 Mob: 0410 693 802

E: lillyfield@bigpond.com

**Maison Mauve** (Non –Assessed)

Mt Tanga, 216 Eldridge Lane, Taylors Flat, NSW 2586  
PO Box 370 Ballan VIC 3342  
Pic: 3MBNG196

**Mapa Alpacas** (Non-Assessed)

2764 Yass River Rd, Yass River. NSW.2582  
Pic: NC623764

**MillDuck Alpaca Stud** (Q-08-2094)

143 Ford Road, Harcourt North, VIC 3453  
Pic: 3GBK145

**Monga Alpacas** (Non-Assessed)

59 River Forest Road, Monga, NSW 2622  
PO Box 351, Braidwood, NSW 2622  
Pic: NJ083297

**Oak Grove Alpacas** (Non-Assessed)

20 Kameruka Lane, Candelo, NSW 2550  
PO Box 4059, Candelo, NSW 2622  
Pic: NJ234059

**Otway Orchard Alpacas** (Non-Assessed)

205 Robinson Road, Barongarook, VIC 3249  
Pic: 3CLMU166

**Patagonia Alpacas** (Non-Assessed)

166 Diamond Swamp Rd, Meadow Flat NSW 2795  
Pic: NH044710

**Precision Alpaca Group** (Non-Assessed)

39 Budds Lane, Baynton, VIC 3444  
Pic: 3MRAF016

**Rockleigh Alpacas** (Non-Assessed)

33 Mills Road, Kanmantoo, SA 5252  
PO Box 1846, Nairne, SA 5252  
Pic: SB272809

**Saints Park / Hidden Gem Alpacas** (Non-Assessed)

43 Saints Lane, St Fillans NSW, 2850  
Pic: N1434649

**Silcron Alpaca Stud** (Non-Assessed)

54 Red Hill Road, Bowning, NSW 2582  
Pic: ND623416

**Walkley Fields Alpacas** (Q—05/0068)

43 Tierney Rd, Kurmond NSW 2757  
Pic: NH041165

**Wedgetail Rise Alpacas** (Non-Assessed)

49 Quilans Road, Verona, NSW 2550  
PO Box 6070 Quaama, NSW 2550  
Pic: NG233157

**Yacka Ridge Alpacas** (Non-Assessed)

1609 Torrens Valley Road, Birdwood, SA 5234  
PO Box 457, Birdwood, SA 5234  
Pic: SB400348

**Rosie Francis**

P: 02 6345 2397 Mob: 0417 203 751  
E: rosiered@usa.net  
www.maisonmauve.net

**Paul Maslen**

Mob: 0417 862 096  
E: sales@mapaalpacas.com.au

**Prue Walduck & Ada Milley**

P: 03 5439 6451 Mob: 0429 437 781  
E: alpacas@millduck.com.au  
www.millduck.com.au

**Bob Kingwell**

Mob: 0488 292 835  
E: mongaalpacas@bigpond.com

**Julie McClen**

P: 02 6493 2036  
E: jmcclen@bigpond.net.au  
www.oakgrove.com.au

**Darren & Claire Balboni**

P: 03 5235 8474 M: 0428 358 474  
E: otwayorchard@activ8.net.au

**Ian Braithwaite & Cathi McMullen**

Mob: 0418 608 447 Mob: 0407 338 823  
E: info@patagoniaalpacos.com.au

**Max & Taryan Mathews**

Mob: 0417 845 480 Mob: 0419 386 068  
E: precisionalpaca@gmail.com  
www.precisionalpaca.com

**Stephanie Carter**

Mob: 0413 344 380  
E: rockleighalpacos@gmail.com

**Vicky Luhrs**

Mob: 0425 366 460  
E: vicky.luhrs@bigpond.com

**Diane Bulpit**

Mob: 0414 447 178  
E: dianebulpit@gmail.com

**Richard Brennan**

Ph: 02 4573 0732 Mob: 0400 477 091  
E: richardjbrennan@gmail.com  
www.walkleyfieldsalpacos.com.au

**Annemarie Ashton-Wyatt**

Mob: 0439 930 501  
E: annemarieashton@hotmail.com  
www.wedgetailrisealpacos.com

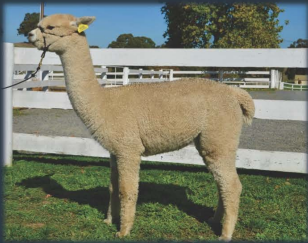
**Jolyon & Kerry Porter**

P: 08 8568 5254 Mob: 0407 602 039  
E: info@yackridge.com

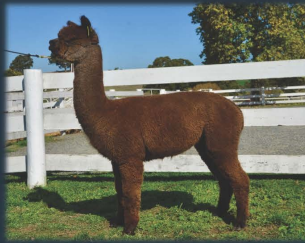
# EP Cambridge Alpaca Stud

est. 1993

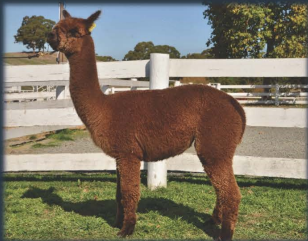
EP Cambridge is proud to introduce this selection of elite maidens for the BCAA 2023. An exciting opportunity offering blends of the industry's most pre-potent bloodlines, including the releases of new genetics.



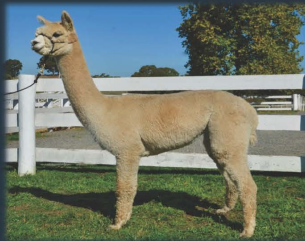
MYSTIQUE



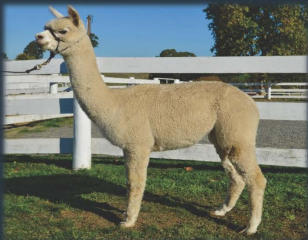
PETE'S PROMISE



SWEET CHEEKS



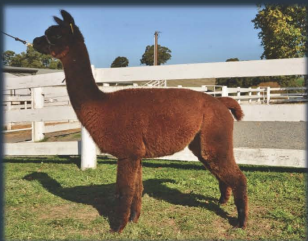
VISION OF BEAUTY



COMPLIMENT



XTREME



HARMONIC

OAKBANK  
South Australia

0417828753

[lawrence@alpacastud.com.au](mailto:lawrence@alpacastud.com.au)

[matthew.lloyd@btconnect.com](mailto:matthew.lloyd@btconnect.com)



AUSTRALIAN ALPACA ASSOCIATION

# National Show 2023

Friday 18 - Sunday 20 August  
Bendigo Showgrounds, Victoria

✦ HALTER & FLEECE SHOW

ART, PHOTOGRAPHY & PRODUCTS

✦ YOUTH COMPETITION

INDUSTRY NETWORKING



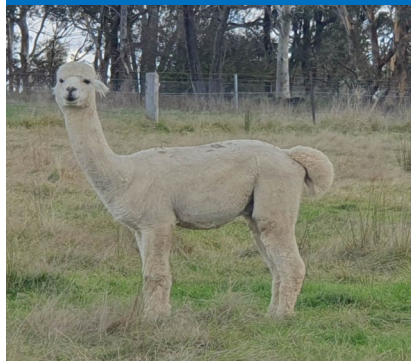
Australian Alpaca  
ASSOCIATION



## Lot 1 Malakai Rezeki

## Light Fawn Certified Male

IAR: 179980 DOB: 10.03.15



Shanbrooke Peruvín Nano  
 Sire: Malakai Royal Vision ET Dam: Malakai Material Girl ET  
 Ambleside Sapphire Malakai Carnival Girl ET

Mated:

Fleece: 2022—M 23.40 SD 4.4 Trim On

Due to the high number of daughters Rezeki has produced it is time for him to now look for new pastures. He has consistently produced fine lustrous crias with excellent fleece weight and length. He also produces all colours, depending on the female, so is useful over many blood-lines.

Goldview Alpacas —Reserved

## Lot 2 Jandarra Knockout

## Solid White Female

IAR: 250348 DOB: 25.02.22



Premier Kiwi Legend Patagonia Celtic Rising Sun  
 Sire: Kurrawa Legends Challenge Dam: Jandarra Sapphire  
 Kurrawa Drama Queen Jandarra Contessa

Mated: Maiden

Fleece: M 18.6 SD 4.6 CV 24.7, 90mm Trim On

A fantastic opportunity to acquire coveted genetics in this impressive female on both sides of her pedigree. Knockouts sire was a champion in both halter and fleece at the National 2016/2017. Knockout is well grown and stands proud and erect in the paddock. Her fleece displays density, length and character. She is halter trained and is perfect age for mating.

Jandarra Alpacas —Reserved

## Lot 3 Jandarra Soopa Doopa + M/Cria

## Solid White Female

IAR: 233221 DOB: 28.04.17



Premier Kiwi Legend Shanbrooke Accoyo Yavari  
 Sire: Kurrawa Legends Armed and Dangerous Dam: Jandarra Solitaire  
 Kurrawa Pazzaz Jandarra Chloe

Mated: LMD May 2023 Softfoot Champagne Lord

Fleece: M23.2 SD 5.2 CV 22.4 CF 89.2% Trim On

Soopa Doopa is the complete package, elite genetics, show winner and Championship winning progeny (Jnr Male Champ, Berwick 2023). Soopa Doopa's male cria . Jandarra Kryptonite is sired by Jandarra Axiom, a true to type male with Accoyo bloodlines. Soopa Doopa's covering sire is Softfoot Champagne Lord renowned for passing on lustrous long fleeces to his show winning progeny. Soopa Doopa is in excellent condition and is halter trained.

Jandarra Alpacas —Reserved

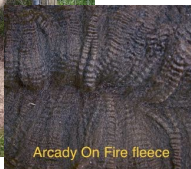
## Lot 4 Arcady Purple Rain

Rose Grey Female

IAR: 252755 DOB: 05.05.21



Arcady Purple Rain



Arcady On Fire fleece

Arcady Madagascar

Hope Downs El Gordo

Sire: Arcady Gleam (LBR)

Dam: Arcady Skye ET (RG)

Nyroca Park Gabriella

Arcady Cloudy Sky

Mated: LMD 10.01.23 to Arcady On Fire (SDBR Roan)

Fleece: 2nd M20.6 SD 4.6 CV 22.4 Trim On

Beautifully grown hembra w/ great presence & a pedigree full of Colour Champions INC her sire (Supreme BRN Flc @ VIC Colourbration), her dam's full brother (Champion GREY Male @ AAA National Show) PLUS she is CONFIRMED PREGNANT to Arcady On Fire (Son of W.V.Firedragon & champion-producing DG female, Arcady La Paz) whose awards include Supreme ROAN at both VIC Colourbration & SA Colour Classic Shows (see inset pic of On Fire's fleece)

Arcadian Alpacas —Reserved

## Lot 5 Appaloosa Sweet Dreams

W/LBR Appaloosa Female

IAR: 252752 DOB: 16.04.21



Appaloosa Sweet Dreams

Arcady Quidam

Arcady Crispin

Sire: Arcady Quandary (Rn)

Dam: Arcady Sugar'n'Spice (SW)

Nyroca Park Gina

Sandridge Cinnamon

Mated: LMD 03.02.23 to Arcady Gleam (LBR)

Fleece: 2nd M17.4 SD 3.6 CV 20.7 Trim On

This very feminine hembra is the 3<sup>rd</sup> appaloosa daughter produced by her SW dam. This is a maternal line that produces mostly female progeny too. Dreams is well-grown with a very genuine ultrafine fleece. She is CONFIRMED PREGNANT to Arcady Gleam (Colour champion winner on halter & for fleece INC Supreme Brown Fleece @ VIC Colourbration for his adult fleece) See inset pic of Gleam. Arcady Quandary was shown for 4x1st placings.

Arcadian Alpacas —Reserved

## Lot 6 Gunnamatta Cinders

MG Female

IAR: 244520 DOB: 28.04.22



Wyterrica Propaganda

Gunnamatta Marconi

Sire: Softfoot Prospect WP

Dam: Gunnamatta Cinderella

Greenvale Daniella

Pacofino Cinchona

Mated: Maiden

Fleece: 2022 M 19, SD 4.5 Trim On

Cinders is a very pretty grey female with dam and sire both grey. She should soon be ready to mate with the sire of your choice. Her sire is a son of the highly acclaimed Wyterrica Propaganda and her dam is the daughter of our beautiful silver grey male, Gunnamatta Marconi (exported to NZ).

Cinders was awarded "Best Grey Huacaya" at Hawkesbury Show 2023—her showing debut

Gunnamatta —Reserved

Lot 7 Alcatraz Gamechanger

Light Fawn Certified Male

IAR: 244321 DOB: 30.06.20

**\*\*\*GAMECHANGER—PACKED  
WITH LEADING GENETICS\*\*\***

Premier Kiwi Legend

Blackgate Lodge Snowmaster

Sire: Kurrawa Legends Challenge

Dam: Blackgate Lodge Whimsey

Kurrawa Drama Queen

Blackgate Lodge Whitney

**3rd Fleece Nov 2022 M18.1 SD 3.9 CF 99% Trim On**

With already three championship awards at prominent WA shows this gives you confidence he will not disappoint. His fourth fleece is displaying a beautiful bundling frequent crimp style. Son of a supreme champion Kurrawa Legends Challenge and his mother is Blackgate Lodge Whimsey who consistently produces champion offspring seven to-date. So all the good stuff is in his blood. The few girls we have that are not related are confirmed pregnant from this exceptional male

**TRANSPORT IS INCLUDED FROM WA TO  
YOUR STUD**



Alcatraz Gamechanger 28-07-2022



Alcatraz Gamechanger 28-07-2022 Third Fleece



Alcatraz Gamechanger 30-04-2023 Fourth Fleece

Champion Junior Male - Giddegannup Show 2021

Champion Intermediate Male - Perth Royal Show 2021

Reserve Champion Male - Giddegannup 2022



Giddegannup Show 2021 Junior Champion Male  
Alcatraz Gamechanger



Alcatraz Gamechanger 07-04-2023

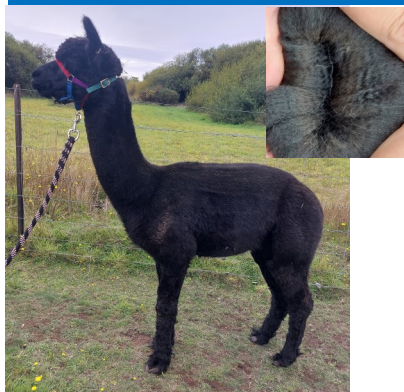
Alcatraz—Reserved



## Lot 8 Green Gully Amigo

True Black Certified Male

IAR: 221309 DOB: 01.09.16



Lemaca —Reserved

Jolimont Tiberio  
Sire: Jolimont Essien  
Jolimont Greta II  
Kia Ora View Temptation  
Dam: Green Gully Anoushka  
Green Gully Anastasia

Fleece: M26.7 SD 4.8 CF 79.4% Trim on

Amigo is very easy to handle and has a small compact frame, He has successfully participated and achieved results in both halter and fleece shows. Amigo is now surplus to our herd as he is closely related to our breeding females. Amigo will not disappoint when it comes to your breeding program.

## Lot 9 Cuzco Kalani

SMBR Female

IAR: 222664 DOB: 20.12.21



Precision Alpaca—Reserved

Orrapooro Trumpeter (MGr)  
Sire: Shanbrooke Silverspoon  
TW ET (LGr)  
Shanbrooke Miss Temptation (RGr)  
Wildflower Tanami (LF)  
Dam: Wildflower Karijini (MF)  
Wildflower Kimberley (SMF)

Mated: Maiden

Fleece: 2022 – M15.8 SD 3.5 CEM 6.9 CF100% 42.4CRV Trim On

Kalani is carrying a highly aligned, beautifully soft handling and bright fleece with great length and a good level of density on a strong and correct frame. She comes from extremely unique genetics, with the best of the Shanbrooke whites mixed with elite grey and fawn breeding making her a huge asset to any coloured program. She placed first at her only show – 2022 Christmas in July

## Lot 10 Precision Leventina ET

Solid Light Fawn Female

IAR: 222658 DOB: 23.02.22



Precision Alpaca—Reserved

Yaamba Enforcer (DF)  
Sire: Yenaminut Evokateur (SW)  
Yenaminut Evoka (SW)  
Ambersun Yukon (SW)  
Dam: Riverport Lowri (SMF)  
Patagonia Celtic Flamingo (LF)

Mated: Maiden

Fleece: 2022 – M16.8 SD 3.7 CEM 6.2 CF100% 45.3CRV Trim on

The time has come to reluctantly release a female from one of our absolute favourite crosses – Evokateur/Lowri. Like her siblings, this female exhibits an ultra-bright, high density, super fine, nutritious fleece with a highly aligned, high frequency/high amplitude crimp style. This cross has been exceptionally consistent, and with the first season of their cria now hitting the ground in the past 6 months, we know this female will be an extraordinary producer.

## Lot 11 Yenaminut Mariana

SMF Female

IAR: 228637 DOB: 18.11.22



EP Cambridge Phenomenon (SW)  
ILR Snowmass Fortune Favors (SLBr)  
Sire: Yenaminut Emilio ET (SMF)  
Dam: Yenaminut Martina (SW)  
Chai-Tee Emily Rose (SW)  
Combe Hill Matilda (SMF)

Mated: Maiden

Fleece: NA

Mariana is pumping out density plus. With a high amplitude, highly aligned style and superb brightness that really jumps out at you, this female has a very “bright” future ahead. She carries her qualities on an exceptionally well-grown frame and offers some of the best genetics from across Australia and America. We are excited to see what this female's future holds !

Precision Alpaca—Reserved

## Lot 12 Yenaminut Judy Bell

Rose Grey Female

IAR: 233447 DOB: 07.03.22



ILR Snowmass Royal Kahuna (SW)  
Shanbrooke Silverspoon TW ET (LGr)  
Sire: Bardella Park Jude Law (RGr)  
Dam: Yenaminut Wedding Bells (MGr)  
Shanbrooke Judy Girl (RGr)  
Forestglen Firenze (MF)

Mated: Maiden

Fleece: 2022 – M15.8 SD 4.3 CEM 8.9 CF100% 40.5CRV Trim on

With an exquisite, high frequency crimp style, great density and stunning coverage on a correct, compact frame, this female was a difficult one to put up for auction. Her pedigree is quite exceptional, with the best of both Australian and American white and coloured genetics bundled into an attractive grey package, there is no doubt this female will have a strong influence on greys in Australia.

Precision Alpaca—Reserved

## Lot 13 Bardella Park Royal Eclipse

SDF Certified Male

IAR: 242575 DOB: 19.12.20



EP Cambridge The Prodigy (SW)  
Yenaminut Lunar Eclipse (SDF)  
Sire: EP Cambridge Phenomenon (SW)  
Dam: Shanbrooke Royal Moon (MGr)  
EP Cambridge Padthaway (SW)  
Greenwood Royalty (MGr)

Fleece: 2022 - M16.4 SD 3.8 CEM 7.5 CF 100% 44.5CRV Trim on

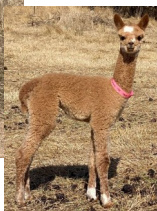
Royal Eclipse is an exceptionally dense male, with fantastic length and fineness and exhibiting a deep, highly aligned crimp style which he carries superbly into the extremities on a macho frame. His sire is a National Champion and sire of some of our top animals, while his dam is an elite Lunar Eclipse daughter and consistent producer of exceptional progeny. With a long list of accolades in both halter and fleece, this male has a very bright stud future ahead of him... on inspection this male will not disappoint!

Precision Alpaca—Reserved

## Lot 14 Yenaminut Pamela

W/DF Appaloosa Female + F Cria

IAR: 258155 DOB: 24.10.22



Adori Accoyo Altaz (SW)

Chiquita Midus (SLF)

Sire: Adori Avalanche (W)

Dam: Dundreugan Paisley (W/MF)

Adori Cascade (SLF)

Lee Carrow Miss Penelope (SW)

Mated: NA

Cria DOB 25.02.23

Cria Sire: Baringhup Austin (SBlk)

Fleece: 2022 M22.4 SD 4.5 CRV 38.7 CF 94.1% Trim On

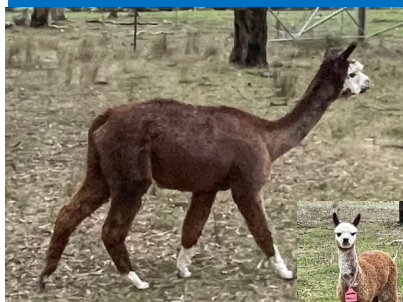
Pamela grows a super long, buttery fleece with a well-defined style and great brightness. She carries this all on a fantastic frame with a beautiful temperament and attractive markings. Her cria is extremely soft and bright, with low presence of coarse primary fibres and a high amplitude style. She is carrying this on a great frame and growing out beautifully

Precision Alpaca —Reserved

## Lot 15 Eaglewood Miss Molto

RG Female + female cria

IAR: 244917 DOB: 18.05.20



Jentez Park Grey Lad

Elyision Elton

Sire: Eaglewood Maximus RG

Dam: Natural Allure Mardi Gras BL

Egale Elton

Natural Allure Starlight

Mated: Shanbooke Silverspoon Paddock 15.04—30.05.23

Fleece: 2022 M17.6 SD 3.6 CF 99.7% Trim Off

Miss Molto is a very nice Rose grey female and is a great breeder already on her second cria. Both crias Rose Grey females.

Sire by Eaglewood Maximus sire of Eaglewood hero Champion grey Sydney Royal 2019.

Last cria is by Shanbrooke Silverspoon and is being retained in the stud—very fine and lovely type.

Current cria Eaglewood Mei Mei IAR 261843 by Eaglewood Prince Una

Eaglewood Alpacas —Reserved

## Lot 16 Kurrawa She is on Fire

Dark Brown Female

IAR: 260910 DOB: 12.02.22



Windsong Valley Firedragon

Kurrawa Galaxy

Sire: EP Cambridge Forged in Fire

Dam: Kurrawa Sweet She is

Cambridge Chancer

Kurrawa Indiana

Mated: Maiden

Fleece: Nov 2022 M14.3 SD 3.3 CV 22.9 CF 100% Trim On

This is our first brown female offered for auction sired by Forged In Fire who is sired by Firedragon. You also have some of the successful lines in the dam's side including Auzengate, Sonoma, Hot Chili and Ledgers Boy. Fire has a very soft handling uniform in micron fleece on a correct frame. If you are looking for a female to throw quality coloured offspring fire is worth considering.

Kurrawa —Reserved



Lot 17 Kurrawa AND Summer Rain      Solid White Female      IAR: 260905      DOB: 18.04.22



Kurrawa —Reserved

Premier Kiwi Legend

Kurrawa Legends Instigator

Sire: Kurrawa Legends Armed and Dangerous

Dam: Kurrawa Summer Haze

Kurrawa Pazzaz

Kurrawa Summer Song

Mated: Maiden

Fleece: Nov 2022 M16.9 SD 4.1 CV 23.9 CF 100% Trim On

Rain is a very pretty female displaying a fine micron which is reflected in her soft handling fleece. She has a highly aligned fleece which is producing good length all on a correct frame. Kiwi Legend has been the most influential sire here at Kurrawa and Rain has two infusions of Kiwi Legend in her pedigree which would make her an asset to any breeder. Her Sire Armed N Dangerous had a successful show career including Supreme at Melbourne Royal.



Lot 18 Kurrawa Independent Miss      Solid Light Fawn Female      IAR: 260925      DOB: 16.05.22



Kurrawa—Reserved

Premier Kiwi Legend

Park View Bellows

Sire: Kurrawa Legend's Enforcer

Dam: Park View Maple

Kurrawa Gosh Im Posh

Park View Cassie

Mated: Maiden

Fleece: Nov 2022 M17.1 SD 3.9 CV 23 CF 100% Trim On

Independent Miss is sired by Enforcer who is from our Posh line that throws colour and quality. Her dam is a beautiful brown female that is also producing high quality offspring. Independent Miss is a well grown girl with correct conformation and displaying a soft handling fleece that is very uniform in micron. She has a lot to offer and would suit any breeding program.



Lot 19 Kurrawa Fire Worx      Solid White Female      IAR: 260904      DOB: 22.04.22



Kurrawa —Reserved

Windsong Valley Firedragon

Premier Kiwi Legend

Sire: EP Cambridge Forged in Fire

Dam: Kurrawa Legend's Social Scandal

Cambridge Chancer

Kurrawa Champagne Bubbles

Mated: Maiden

Fleece: Nov 2022 M18 SD 4.6 CV 25.5 CF 99.3% Trim On

Fire Worx is an upstanding girl with correct conformation and a fleece that is displaying a well organised style, soft handle combined with great density. She is sired by Forged In Fire who is producing high quality stock for us. The combination of Kiwi Legend on the Dam's side makes this female a valuable asset to any breeding program. This female line has always produced consistent good quality stock.



## Lot 20 Boolaroo Zephyr

Grey Female

IAR: 258155 DOB: 24.10.22



Tularosa Leonardo

Tularosa Leonardo

Sire: Boolaroo Silver

Dam: Coraz Zaida

Tularosa Sheila

Coraz Zinda

Mated: NA

Fleece: Not available

Zephyr is a well grown young female, with a consistent grey fleece and excellent conformation. Silver's progeny are consistently high quality, and she will be a great female to bring into your herd with his genetics.

Boolaroo Suri Alpacas—Reserved

## Lot 21 Boolaroo Mercury

Grey Certified Male

IAR: 240308 DOB: 10.04.18



Canchones Rabanne

Pinjarra Starmoss

Sire: Lowanna Elfyn

Dam: Tularosa Applique

Canchones Effusion

Bumble Hill Aprile

Fleece: 1st M16.1 SD 4.2 CF 100% Trim On

2021 M22.3 SD 5.1 CF 92.4% Trim On

2022 M24.2 SD 5.6 CF 86.9% Trim On

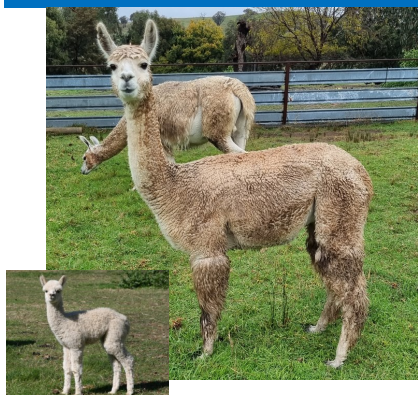
Mercury had enormous show success in halter & fleece, he still retains a fine & dense fleece with a soft handle, with excellent conformation & a pleasure to handle. His first two cria are greys and his qualities will be an asset to any grey breeders.

Boolaroo Suri Alpacas—Reserved

## Lot 22 Maison Mauve Hellebore

SMF Female + male cria

IAR: 227160 DOB: 19.03.16



Cedar House Lucifer

Tangilly Rohan

Sire: Lavender Park Rembrandt

Dam: Accapacca Mischka

Alpacandes Empire Rose

Murrumbung Musca

Mated: Will be mated to One Tree Hill Flecktarn

Fleece: M 28.1 SD 4.8 CF 72.5 CRV 36.5 Trim On

Nice dense fleece on a good frame, easy birther and excellent mother.

Exciting male cria at foot: Maison Mauve Ishikawa DOB 07.04.23 Reg pending—cria's sire is Maison Mauve Amadeus

Maison Mauve—Unreserved

## Lot 23 Maison Mauve Ariadne

MF Female + female cria

IAR:

245114

DOB:

19.03.19



Blue Grass Bollinger  
Sire: Lillyfiled Megastar  
Tennyson Park Summer Star

Lavender Park Aristaeus  
Dam: Lavender Park Zeena  
Accapacca Zendarada

Mated: Will be mated to One Tree Hill Flecktarn

Fleece: M 25.4 SD 5.8 CF 84 CRV 42 Trim On

Nice dense fleece on a good frame, easy birther and excellent mother. Exciting female cria at foot: Maison Mauve Beatrix DOB 31.03.23 Reg pending, she is a few spot appaloosa, more spots should come as she grows. Cria sire is Maison Meave Amadeus

Maison Mauve —Unreserved

## Lot 24 Maison Mauve Queen of Hearts

DF Female + male cria

IAR:

250284

DOB:

17.03.20



Blue Grass Bollinger  
Sire: Lillyfiled Megastar  
Tennyson Park Summer Star

Jaspers Brush Falstaff  
Lavender Park Precious Belle  
Lavender Park Liberty Belle

Mated: Will be mated to One Tree Hill Flecktarn

Fleece: M 21.9 SD 4.0 CF 96.1 CRV 49.6 Trim On

Nice dense fleece on a large strong frame, easy birther and excellent mother.

Exciting male cria at foot: Maison Mauve Raja of India DOB 07.04.23 Reg pending. Cria's sire is Maison Mauve Amadeus

Maison Mauve —Unreserved

## Lot 25 Masion Mauve Nietta

Solid White Female

IAR:

241785

DOB:

25.12.19



Blackgate Lodge Sire Oliver  
Sire: The Majestic Spitfire  
Softfoot Pandora

Tangilly Rohan  
Dam: Accapacca Mischka  
Murrumbung Musca

Mated: Maison Mauve Namatjira 22.05.22

Fleece: M 23.2 SD 5.1 Cf 91.3 CRV 54.3 Trim On

Nice dense fleece on a good frame, easy birther and excellent mother.

Will be remated to One Tree Hill Flecktarn once current (overdue) cria is born

Maison Mauve —Unreserved



## Lot 26 Rockleigh Twilight

## Bay Black Female

IAR: 233862 DOB: 03.05.20



Greenwood Bentley  
Sire: Follyfoot Farm Casanova  
Follyfoot Farm Pizzaz  
Fine Choice Armani  
Dam: Rockleigh Rarity  
Trumar Lauren

Mated: Open

Fleece: Oct 2020 Mic 19.7, SD 4.6, CF 97.3, CRV 32.6 Trim On  
Oct 2022 Mic 22.5, SD 3.9, CF 96.9, CRV 30.7 Trim On

Very happy with Twilight's first progeny, she is currently unmated so she is ready for you to start breeding her how you see fit. Beautiful temperament, fine fleece, and a good frame. Have a look through this girls genetics and you will find many well known names: Peruvian Ultimo, Parnabrae Brutus, Purrumbete Highlander, Adelyn Highland Mist, and Purrumbete El Dorado. On farm viewing available by appointment.

Rockleigh Alpacas —Reserved

## Lot 27 Follyfoot Farm Casanova

## Black Certified Male

IAR: 184981 DOB: 03.10.12



Huntley Park Anzac  
Sire: Greenwood Bentley  
Hinterland Bess  
Jolimont Aramis  
Dam: Follyfoot Farm Pizzaz  
Follyfoot Farm Caramel  
Fudge

Fleece: Oct 2018 Mic 27.7, SD 5.8, CF 70.2, CRV 30.2 Trim On  
Oct 2022 Mic 27.6, SD 5.9, CF 71.2, CRV 30.6 Trim On

Casanova has produced numerous ultrafine and superfine cria despite what his fleece stats may make you think. This solid black male is originally from NSW, he has some lovely backline genetics and would be great for anyone looking to outbreed. His fleece is consistent with moderate density with minimal change over the years, more fleece stats are available upon request.

Rockleigh Alpacas —Reserved

## Lot 28 Emyprean Golden Girl

## Solid White Female

IAR: 245544 DOB: 09.10.21



Malakai Royal Vision ET  
Sire: Wahroongah Malakai  
Royal Acclaim  
Winsong Valley Taya  
Acacia Caribbean  
Dam: Buckland Sister Golden Hair  
Buckland Ventura

Mated: Open

Fleece: 2022 M17.8 SD 3.4 CRV 40.8 CF 99.5% Trim On

The daughter of a multiple Champion-winning male, this beautiful female has continued to excel in her fleece attributes. She has a well-defined and well-aligned crimp style that carries very well into her extremities. Her deep amplitude crimp style is complimented by her eye-catching brightness and a low variation of micron between her primary and secondary fibres. We were proud to have her shown on our behalf, where she achieved Reserve Champion at the 2022 Wangaratta Show.

Charlie Golding—Reserved



Lot 29 Empyrean Estelle	Solid White Female	IAR: 250217	DOB: 25.02.21
-------------------------	--------------------	-------------	---------------






**Jolimont Shere Khan**  
**Malakai Sudden Impact ET**  
**Sire: Jolimont Esteban**      **Dam: Eulinya Constellation**  
**Jolimont Arella**      **Jolimont Galaxy**

**Mated: Open**  
**Fleece: 2022 M21.2 SD 4.2 CRV 46.3 CF 97.3% Trim On**

The daughter of a Supreme Champion, Estelle exhibits a strong degree of density that is easy to feel when we put our hands on her. Paired with her correctly proportioned frame, we are pleased with her consistent style that is combination of the quality of her Sire and Dam's genetics and quality.

Charlie Golding —Reserved

Lot 30 Moresby Farm Harmonize	Solid White Female	IAR: 245525	DOB: 21.03.21
-------------------------------	--------------------	-------------	---------------

**EP Cambridge Risk Taker ET**  
**EP Cambridge Diversity**  
**Sire: Cambridge Virtual Reality**      **Dam: Moresby Farm Harmony**  
**Cambridge Evelyn**      **Moresby Farm Melody**

**Mated: Open**  
**Fleece: 2022 M19.6 SD 3.9 CRV 41 CF 98.8% Trim On**

Hailing from a AAA National Reserve Champion (EPC Virtual Reality), Harmonize combines exciting genetics and does her lineage proud with her quality. The alignment and uniformity of this lovely female are joined with pleasing length and density. She has a strong presence and possesses a correct and upright frame. She is ready to mate and pass her positive traits to her progeny.

Charlie Golding —Reserved

Lot 31 Moresby Farm Calypsia	SMF Female	IAR: 245524	DOB: 17.04.21
------------------------------	------------	-------------	---------------





**Wyterra Propaganda**  
**Softfoot Trezure**  
**Sire: Grey Gum Bandido**      **Dam: Moresby Farm Calypso**  
**Grey Gum Malibu**      **Gumbarwil Lara**

**Mated: Open**  
**Fleece: 2022 M18.6 SD 3.7 CRV 38.3 CF 99.7% Trim On**

Calypsia is a beautiful coloured female with a lot of breeding potential. Her sire has won countless broad ribbons in the show ring. The network of genetics behind this girl are very promising for breeding coloured progeny. She has a soft handle and a lovely uniform colour to her fleece.

Charlie Golding —Reserved

Lot 32 Saints Park Constance	Solid White Female	IAR: 224257	DOB: 18.03.21
------------------------------	--------------------	-------------	---------------



Sire: Millduck Lincoln SDF  
Green Gully Apache  
Green Gully Anastasia W

Dam: Running Creek Alabama SW  
NEO Summerhill Maitresse  
Alpacaspecialist MysteryGirl


Mated: Maiden

Fleece: M22.2 SD 4.5 CRV 41.2 CF 94.2% 160mm Trim On

A well built girl who grows a huge commercial quality fleece. Whilst Constance has a high degree of colour in her background, she has pink skin and toes so would fit well into either a coloured or white breeding program. Constance is a relaxed, calm girl who doesn't mind the occasional neck scratch. She is halter trained and shows definite interest in the males. Not mated as I'm concentrating on colour and appaloosas.

Saints Park—Reserved

Lot 33 Saints Park Myrah	Solid White Female	IAR: 224259	DOB: 06.04.21
--------------------------	--------------------	-------------	---------------



Sire: Camelot Tor SWT  
Vista Toro SWT  
Bridge Creek Bolero SLB

Dam: The Andes Lotus WT  
Andes Moonstone 27 SMF  
Andes Moonstore 3 MF


Mated: Maiden

Fleece: M22.9 SD 4.6 CRV 37.1 CF 92.2% 125mm Trim On

A petite but well conformed female with a majority white background. Camelot Tor features as her grandsire. She is halter trained and shows definite interest in the boys. Not mated as I'm concentrating on colour and Appaloosas.

Saints Park —Unreserved

Lot 34 Vista Diora	Tuxedo Dk Brown Female	IAR: 227827	DOB: 08.11.17
--------------------	------------------------	-------------	---------------



Sire: Shanbrooke Peruvian Nano SWT  
Shanbrooke Gold Perfection SD  
Shanbrooke Golden Lace

Dam: Yalin Romeo BK  
Braeside Dior MG  
Braeside Rising Star MG

Mated: Open

Fleece: M29.9 SD 6.8 CRV 34.1 80mm Trim On

A well grown girl who would be of interest to black breeders. She has not been mated due to the drought years and then moving away from greys & blacks. Diora eagerly sits at the fence line during nearby mating sessions. Diora came to me at just over a year old so she has not had the extensive early handling my animals normally receive, hence, whilst she prefers not to be handled, she behaves and leads well once on halter.

Saints Park —Unreserved



## Rarely Released MillDuck Genetics

Lot 35 MillDuck Up Town Girl Solid Medium Brown IAR: 232617 DOB: 20.03.17

**Sire:** MillDuck Jarrah **Dam:** Banksia Park ICD Disco Rose  
**Mated:** MillDuck Uluru 20.2.23. "In-house Stud Male" Live Cria Guarantee  
**Supreme Brown & Champion Intermediate Male – National Show**  
**Fleece:** (Trim On) 2022 6<sup>th</sup> Fleece - M 22.6, SD 4.6, CF 93.6%  
**Show:** 2 Shows – 2<sup>nd</sup> & 3<sup>rd</sup> place

- Excellent Conformation
- Rich brown with black points
- Retaining fineness, handle, G/Density
- Progeny Fleece Stats:
  - M 16.2, SD 3.7, CF 100%
  - M 15.9, SD 3.6, CF 100%
- Producing Ribbon Winning Progeny:



MillDuck - Reserved.

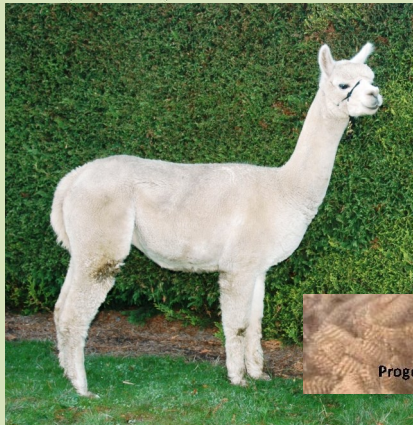
More details – [www.millduck.com.au](http://www.millduck.com.au)



Lots 36 MillDuck Tia Chi Solid Light Fawn IAR: 232613 DOB: 23.10.16

**Sire:** Pentland Giorgio **Dam:** MillDuck Kristie-Lou (dam of Oregon/Stringy Bark)  
**Mated:** MillDuck Uluru 13.3.23. "In-house Stud Male" Live Cria Guarantee  
**Supreme Brown & Champion Intermediate Male – National Show**  
**Fleece:** (Trim On) 2022 7<sup>th</sup> Fleece: M 25.2, SD 4.6, CF 89.3%  
**Show:** 1 Show – 2<sup>nd</sup> place

- Square "True to Type" frame
- Superior density, handle, length
- Produces Coloured Progeny
- Progeny Fleece Stats:
  - M 14.6, SD 3.8, CF 100%
  - M 15.6, SD 3.5, CF 100%
- Producing Ribbon Winning Progeny



MillDuck – Reserved

More details – [www.millduck.com.au](http://www.millduck.com.au)



Lot 37 Yacka Ridge Prima Donna	Rose Grey Female	IAR:	217349	DOB:	15.05.18
--------------------------------	------------------	------	--------	------	----------



Alpacapartners Bona-		Alpacaspecialist Crackerjack
parte		
Sire:	Qozqo Marco	Dam: Yacka Ridge Keva
	Qozqo Macarina	Yacka Ridge Geneva

Mated: LMD 08.07.22 Joars Leiland  
Fleece: M22.1 SD 4.7 CRV 46.8 CF 95.9% Wt 1.9kg Trim On

This beautifully even, fine, light rose grey female has very few spots on her, and those she has are insignificant. She is well grown and has proven to be a very attentive mum. She is currently late pregnant to Jotars Leiland, a very fine, light grey sire who regularly throws grey and black cria. Combining this with her good fleece stats makes her a very desirable offering. Her cria is due prior to auction, hopefully making this a two in one purchase.

Yacka Ridge —Reserved

Lot 38 Yacka Ridge Ruffled Edge	Medium Fawn Female	IAR:	256759	DOB:	14.07.20
---------------------------------	--------------------	------	--------	------	----------



Windsong Valley Firedragon		Flying Colours Leading Edge
Sire:	EPC Playing With Fire	Dam: Timbertop Sweet Edge
	EPC Francesca	Timbertop Sweet Surprise

Mated: LMD 07.07.22 Haylilla Dom Perignon  
Fleece: M19.3 SD 4.1 CRV 49.3 CF 99% Wt 2.4kg Trim On

A well grown out female who is approaching her first birth, which is due prior to auction and is included in the sale, hopefully making this a two in one package. Her stylish, fine fleece is complimented by great stats and very good cutting weight. Her mating to Haylilla Dom Perignon, a medium fawn sire, is aimed at reinforcing the colour and fleece qualities this girl exhibits.

Yacka Ridge —Reserved

Lot 39 Yacka Ridge Selena	Solid Light Fawn Female	IAR:	256785	DOB:	26.06.21
---------------------------	-------------------------	------	--------	------	----------



Windsong Valley Firedragon		Windsong Valley Thorn 2
Sire:	EPC Playing With Fire	Dam: Yacka Ridge Odessa
	EPC Francesca	Timbertop Sweet Surprise

Mated: Maiden  
Fleece: M16.7 SD 4.5 CRV 46.7 CF 100% 105mm Wt 2.4kg Trim On

With a very stylish, ultrafine and heavy cutting fleece, this young girl is ready for mating now. A simple check of her stats and photo shows that she would be a great asset to any breeder serious about producing quality fleeced alpaca.

Yacka Ridge —Reserved



Lot 40 Patagonia KH Frida  
Kahlo

Solid White Female

IAR: 249569    DOB: 01.06.21



Sire: Snowmass Conopa's Kahuna  
ILR Snowmass Royal Kahuna  
Snowmass Royal Wedding

Dam: Patagonia Celtic Triumph  
Patagonia Celtic Artiste  
Patagonia Chanteuse

**Mated: LMD 10.05.23 to Snowmass Absolut Temptation**

**Fleece: 2nd M19.4 SD 3.9 CV 20.1 CF 98.9% CRV49.4% Trim On**

This impressive young white female has been recognised in the show ring with a series of champion ships, including a Reserve Junior Female Champion at Sydney Royal 2022. We would happily retain Frida in our program but we like to offer the best at BCAA. Frida has a lustrous, high frequency, deep amplitude, bundling fleece and correct conformation. In terms of genetics, she reflects the fusion of Celtic Triumph ET daughter and the highly regarded Snowmass Royal Kahuna. An elite female to enhance your white breeding program.

Mated to Snowmass Absolut Temptation to enhance length, lustre and microbundling.

Show Results:

Junior Champ Female—Moss Vale Show 2022

Junior Champ Female—Hawkesbury Show 2022

Junior Res Champ Female—Sydney Royal Show 2022

2nd Adult White Female—Moss Vale Show 2023

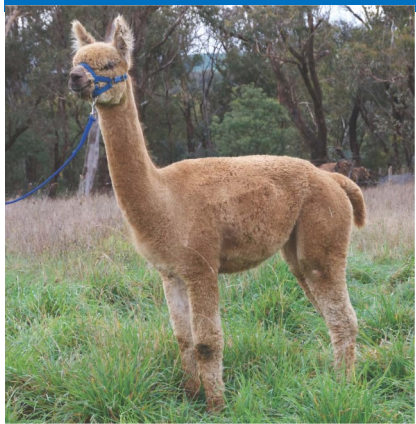


Patagonia Alpacas —Reserved

Lot 41 Patagonia VV Fantasy

Solid Dark Fawn Female

IAR: 249248    DOB: 18.05.20



Sire: Snowmass Velvet Touche  
ILR Snowmass Velveteer  
Snowmass Royal Divinity

Dam: Snowmass Royal Kahuna  
Patagonia KH Fantasia  
Patagonia Celtic Flamenco

**Mated: LMD 05.05.23 Snowmass Absolut Temptation**

**Fleece: 3rd M 20.5 SD 4.9 CV 20 CF 97.9% CRV 32.7% Trim On**

Fantasy is a stunning dark fawn female with a high frequency, very soft handling, lustrous fleece, correct conformation and a gorgeous head. She awarded blue ribbons at her only two shows and also awarded Junior Female Championship. This is a rare offering with the crossing of a Snowmass Royal Kahuna dam with a Snowmass Velveteer, a very special fawn male whose breeding time was cut short. Mated to Snowmass Absolut Temptation one of our leading imported males who is producing colour with our coloured females.

Show Results

Junior Champion Female Highlands Show 2021

1st Junior Med/Dk Fawn Highlands Show 2021

1st Junior Med/Dk Fawn Hawkesbury Show 2021



Patagonia Alpacas —Reserved

## Lot 42 Buckland Moon Unit

Solid White Female

IAR: 254965 DOB: 18.12.21



EP Cambridge Prerogative ET

Acacia Caribbean

Sire: EP Cambridge Revenant

Dam: Buckland Moonambel

EP Cambridge Prodgial Daughter

Sunnyvale Jezabel

Mated: LMD April 23 Malakai Andromeda

Fleece: M15.9 SD 4.1 Trim On

A perfectly conformed EPC Revenant daughter with a long, very fine and extremely well aligned fleece consistent over her full frame. She comes with a mating to Malakai Andromeda, the sire of National Grand Champion female, Buckland Rapture Colourbration 2022 Reserve Champ White as a 6 month old Goulburn Xmas in July 2022 Reserve Champion White Seymour Jnr Res Champ (behind Supreme) National 2022 Jnr Reserve Champion

Buckland Alpacas —Reserved

## Lot 43 Buckland Occhipinti

Solid Light Fawn Female

IAR: 226058 DOB: 20.03.19



Windsong Valley Iceman

Almora Nomad

Sire: Acacia Caribbean

Dam: Buckland Giaconda

Acacia Calypso

Holmlea Poppy

Mated: LMD 10.04.23 Malakai Andromeda

Fleece: M20.5 SD 3.9 Trim On

Occupinti's dam is the 2011 AAA National Best Brown Female and she is now pregnant to Malakai Andromeda, sire of the 2022 National Grand Champion Female. We're guessing this baby will also be making an appearance at the Nationals! Occhipinti has retained her fineness and beautiful soft handle on a well put together frame. An exciting baby on board!

Buckland Alpacas —Reserved

## Lot 44 Buckland Corsage

Solid White Female

IAR: 254964 DOB: 17.12.22



EP Cambridge Prerogative ET

Acacia Caribbean

Sire: EP Cambridge Revenant

Dam: Buckland Confetti

EP Cambridge Prodgial Daughter

Vista Sia

Mated: Maiden

Fleece: M18.4 SD 4.2 Trim On

A beautiful EPC Revenant daughter from one of our top performing lines – Vista Sia. Sired by Camelot Tor, Sia has produced many champions for us. Corsage has a stylish soft handling fleece with excellent amplitude and alignment.

Buckland Alpacas —Reserved

## Lot 45 Buckland Superstar

Solid White Female

IAR: 254974 DOB: 12.02.22



Sire: [Goldleaf Nobility ET](#) [Acacia Caribbean](#)  
[Malakai Andromeda](#) [Buckland Bronte Sister](#)  
[Malakai Galaxia](#) [Vista Shar](#)

Mated: Maiden

Fleece: M16.8 SD 3.9 Trim On

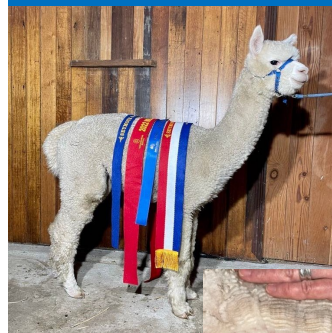
The first progeny to be released from Malakai Andromeda, sire of the AAA National Grand Champion Female. Well grown with perfect conformation, Superstar has a gorgeous, silky soft handling fleece. Her dam is sired by Acacia Caribbean and he has packed in the density as usual. This girl will have a far reaching impact on your herd and future show team!

Buckland Alpacas —Reserved

## Lot 46 Buckland Sidewinder

Solid White Certified Male

IAR: 254966 DOB: 22.12.21



Sire: [EP Cambridge Prerogative ET](#) [Ambersun Rip Curl](#)  
[EP Cambridge Revenant](#) [Buckland Twisted Sister](#)  
[EP Cambridge Prodgial Daughter](#) [Vista Sia](#)

Fleece: M17 SD 3.8 Trim On

Always a presence in the show ring, Sidewinder's fleece characteristics augur well for a bright future as a stud male. He has extreme density and a very stylish and lustrous fleece right across his body. All of this on a strong and robust frame with a great temperament too!

Goulburn Xmas in July 2022: 1st Junior White Male

Melbourne Royal: 2nd Junior White Male

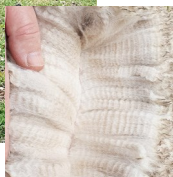
Seymour: Champ Junior Male

Buckland Alpacas —Reserved

## Lot 47 Lillyfield Kordia

Solid White Female

IAR: 260202 DOB: 10.04.22



Sire: [Malakai Royal Vision](#) [Blue Grass Bollinger](#)  
[Malakai Rezeki](#) [Lillyfield Malone](#)  
[Malakai Material Girl](#) [Windsong Valley Chiquita](#)

Mated: Maiden

Fleece: M18.7 SD 4.7 110mm Trim On

Cute as a button maiden female, comes with excellent genetics on a lovely frame – produces a real commercial length of fleece, a blockier style, but full of lustre – overall very attractive. Top quality genetic background

Lillyfield Alpacas —Reserved



### Lot 48 Lillyfield Baskal

Solid Light Fawn Female

IAR: 259797 DOB: 10.03.22



Blue Grass Bollinger  
Sire: Lillyfield Up The Ante  
Lillyfield Matilda  
Forestview Prince of Thieves  
Dam: Lillyfield Countess  
Wongadene Satine

Mated: Maiden

Fleece: M16.7 SD 4.1 80mm Trim On

Another young maiden – ready for her breeding future in spring time. She has excellent genetics and an extremely soft handling fleece, crimp style is just maturing now as she is still ultra-fine. Baskal is well worth consideration.

Lillyfield Alpacas —Unreserved

### Lot 49 Lillyfield Mysterious Ways

Solid White Female

IAR: 231007 DOB: 18.04.17



Benleigh Cavalier  
Sire: Jandarra Touchdown  
Jandarra Sapphire  
Blue Grass Bollinger  
Dam: Lillyfield Phaedra  
Brabant Ariana

Mated: LMD 06.04.23 Grey Gum Classified

Fleece: M24 SD 4.4 CRV 43 Trim On

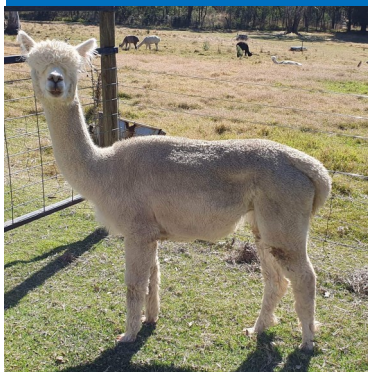
Mysterious Ways is a beautifully proportioned female with great capacity. She has a dense stylish fleece, with a high frequency crimp & excellent lustour. Cria to date are ultra-fine with excellent style

Lillyfield Alpacas —Reserved

### Lot 50 Lillyfield Kisaiya

Solid Light Fawn Female

IAR: 226134 DOB: 14.03.16



Jolimont Commissario  
Sire: EP Cambridge Oblivion  
EP Cambridge Illustrious  
Lillyfield Alchemy  
Dam: Lillyfield Gypsy Princess  
Lillyfield Czigany

Mated: LMD 19.04.23 Lillyfield Up The Ante

Fleece: M25.2 SD 4.8 75mm Trim On

Kisaiya is still retaining excellent density & producing a commercial length fleece. Mated to colour this time to see what she can do. Produces ultra-fine progeny and is an excellent mother

Lillyfield Alpacas —Unreserved

Lot 51 Lillyfield Royal Rip Curl

Solid Light Brown Female

IAR: 259798

DOB: 11.03.22



Lillyfield Up The Ante

Forestview Prince Of Thieves

Sire: Lillyfield Rip Tide

Dam: Garibaldi Royal Princess

Garibaldi Sankara

Shanbrooke Watch Me Shine

Mated: Maiden

Fleece: M 16.4 SD 3.2 CF 100% Trim On

Royal Rip Curl is one of the early Rip Tide progeny @ we couldn't be happier. Rip Tide is a multiple Age & Best of Colour Champion & Rip Curl is following in his footsteps.

She is ultra-fine, with a high frequency crimp & exceptionally long lustrous fleece, on a correct frame with excellent substance of bone.

With such a fine, long fleece we are confident she will go on to be the dam of Show Champions into the future. Royal Rip Curl comes with a free mating to Cambridge Showman—he is the sire of so many Champions in the last 2 years, we are totally thrilled and proudly offering Royal Rip Curl up for this auction.

Show Results

2nd Jnr Brown Female—Royal Canberra

1st Jnr Brown Female & Res Champ —Boorowa

Best Brown in Show Boorowa (winner of Karen Caldwell Plague for 2023)

1st Intermediate Brown Female—Moss Vale

Lillyfield Alpacas —Reserved



**Wedgetail Rise  
Alpacas**

**Your best choice in the Bega Valley NSW for  
Breeding Stock, Herdguards and Pets  
Yarn and Fleece Sales  
Ashford Wheels and Looms  
Textiles Arts Lessons**

[www.wedgetailrisealpacas.com](http://www.wedgetailrisealpacas.com)



**The AAA would like to thank and  
Recognise the hard work from Peter and Narelle  
over the past 10 years of  
Breeders Choice Alpaca Auctions.**



**We look forward to taking over the auction so that  
it will continue on and give breeders the opportunity to buy  
and sell with confidence**

**Thanks to the Vendors for Making Available,  
These Outstanding Selections for this Year's Line Up .....**



**Australian Alpaca**  
A S S O C I A T I O N

Lot 52 Wedgetail Rise Winona

Fancy DF/White Female

IAR: 252577 DOB: 17.11.22



Sire: Wyona Censational  
Follyfoot Farm Good as Gold  
Follyfoot Farm Goldilocks

Dam: Jandarra Buccaneer  
Jandarra Wyetta  
Janderra Moonlight Shadow

Mated: Maiden

Fleece: Not yet shorn

Winona wowed us from day one with her soft-handling, dense, lustrous fleece, with a well-defined staple. Her pedigree is packed with champion genetics including EPC Peruvian Spartacus, Shanbrooke Accoyo Yavari, and El Dorado. She's a hard one to let go, but she needs the chance to shine in the show team and breeding program of a specialist fancy breeder.

Wedgetail Rise Alpacas —Reserved

Lot 53 Wedgetail Rise Rain Dancer

Bay Black Female

IAR: 252565 DOB: 22.03.21



Sire: Wyona Censational  
Follyfoot Farm Good as Gold  
Follyfoot Farm Goldilocks

Dam: Alpha Centauri Alba  
Masion Mauve Jumanji  
Lavender Park Joelene

Mated: LMD 03.04.23 Pengarook Iggy Pop

Fleece: TBA

If fibre length in dark colours is one of your goals, then consider this girl. Rain Dancer's second fleece length of 120mm was impressive. She has a soft handling, medium staple with low levels of guard hair, correct conformation, and a gentle nature. She comes with a mating to our champion stud male Pengarook Iggy Pop. Not currently available for outside matings, this is an opportunity to obtain some rare black genetics !

Wedgetail Rise Alpacas —Reserved



Lot 54 Otway Orchard Fairytale

Solid Dark Fawn Female

IAR: 231677 DOB: 12.03.17



Otway Orchard Alpacas —Reserved

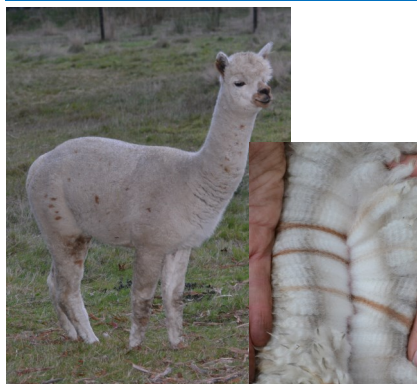
Peerless Marlechchino Blackgate Lodge Picasso  
 Sire: Appaloosa Archipelago Dam: Otway Orchard Cinderella  
 Black Stump Guadeloupe Raindows End Noella  
 Mated: LMD 14.03.23 Goldleaf Blueprint (LG)  
 Fleece: 5th M18.8 SD 3.9 CV 20.9 CF 98.6% CRV 46.6 Trim On  
 6th M19.7 SD 4.1 CV 21 CF 97.4% CRV 47.3 Trim On

What exceptional fleece stats this girl has! At 6 years of age she still holds a 19.7micron fleece. As you can see she has consistently held her low micron whilst feeding cria etc. Fairytale has a high frequency fleece style with minimal guard hair on a correct frame. She is an easy birther, feeds her cria well and is halter trained. We are retaining two of her daughters in our breeding programme, hence why we are willing to let her go. Joined to our light grey male 'Goldleaf Blueprint' this is a great opportunity to purchase a quality pregnant female.

Lot 55 Otway Orchard Moscato

Appaloosa Female

IAR: 244738 DOB: 20.02.21



Otway Orchard Alpacas —Reserved

The Majestic Spitfire Appaloosa Archipelago  
 Sire: The Majestic Heartbreaker Dam: Otway Orchard Champagne  
 Majestica Debut Schutara Park Pollywaffle  
 Mated: Maiden  
 Fleece: 1st M15.3 SD 3.2 CV 21 CF 100% CRV 41.4 Trim On  
 2nd M18 SD 3.3 CV 18.3 CF 99.8% CRV 43.4 Trim On

This eye-catching young female is pumping out a long, dense fleece with a high frequency crimp style. She has excellent substance of bone, a solid correct frame, and is halter trained. Moscato is a very attractive appaloosa female with many spots throughout her fleece. She also has appaloosa genetics on both sides of her bloodline.

With her whole breeding life ahead of her she would make an excellent female for appaloosa or coloured breeders alike.

Lot 56 Monga Jewel

SW Female + female cria

IAR: 210922 DOB: 25.02.15



Monga —Reserved

Shanbrooke Accoyo Belbourie Brigand  
 Yavari  
 Sire: Belbourie Titan Dam: Monga Jade  
 Benleigh Tikki Alpacapartners Jezabella  
 Mated: LMD 16.12.22 to Ambersun Marksman  
 Fleece: M 27.6 SD 4.8 SL 80 CF 81.3% CRV 37.7 CE 2.5% Trim Off

Female SW cria, JULIET by Ambersun Marksman, DOB 28.11.22, has potential for density with low stats. Excellent 8 yrs old mother, quiet temperament, soft dense fleece, 1st Dams Progeny NFC 2020. Titan line has produced many award-winning alpacas including stud sire Monga Khan. Repeat matings with Marksman (6th fleece 21.4m trim off) expected to give another cria with low stats. Marksman awarded Mature Champion Fleece NFC.

## Lot 57 Monga Fanella

SW Female + female cria

IAR: 184523 DOB: 02.01.13



Belbourie Logical Choice NWA LTD Solomon  
Sire: Belbourie Brigand Dam: Belbourie Fantasy  
Belbourie Bella Jolimont Foscarina

Mated: LMD 24.01.23 to Monga Khan

Fleece: M28.4 SD 5.6 SL 80 CF 72.5% CRV 31.8 CE 3.6% Trim Off

Female white cria, FRUITY by Monga Khan, DOB 26.12.22, brown spot behind ears, well grown, show potential fleece. Khan awarded Supreme Fleece and Most Valuable Commercial Fleece Royal Canberra 2014, Champion Senior Fleece and again Most Valuable Commercial Fleece in 2015. Excellent 10 yr old mother, plenty of milk, very dense soft fleece. Brigand had dense fleece, low visible GH. Repeat Khan mating expected to give another quality cria

Monga —Reserved

## Lot 58 Monga Cherrie

SW Female + female cria

IAR: 184487 DOB: 16.02.12



Alpacapartners White Cloud Belbourie Titan  
Sire: Monga McLeod Dam: Monga Chikita  
Noble Note Arabella Currabungla Chumani

Mated: LMD 28.02.23 Monga Mustang

Fleece: M25.2 SD 5.9 SL 70 CF 87.5% CRV 36.2 CE 4.4% Trim Off

Female SW cria, CLARITY by Ambersun Marksman, DOB 28.02.23, has potential for density with low stats. Excellent 11 yr old mother, very dense, fine pencilled, deep amplitude, medium frequency, uniform fleece. Mating to Mustang (sired by Monga Khan), Champion Adult Fleece, Most Valuable Commercial Fleece Cbr Royal 2019 so is expected to give a dense fleece with low stats.

Monga —Reserved

## Lot 59 Monga Cosima

SW Female + male cria

IAR: 174043 DOB: 17.03.11



EP Cambridge Xaviour Fine Choice Peruvian Ultimo  
Sire: Monga Tobermory Dam: Belbourie Coco  
Alpacapartners Jezabella Meadow Bank Fantasy

Mated: LMD 03.02.23 to Monga Mustang

Fleece: M25.4 SD 5.4 SL 65 CF 88% CRV 35 CE 4.2% Trim Off

Male SW cria, CONAN by Monga Channing, DOB 16.01.23, show potential very dense fleece. Excellent 12 yrs old mother, consistently produces show quality cria with potential for many more. This mating to Mustang has potential to produce a dense, low stats fleece. Mustang is our most recently certified male, Champ Adult Fleece and MVC Fleece Royal Cbr 2019. He continues to hold his stats (6th Fleece 23.2m trim off)

Monga —Reserved

Lot 60 Walkley Field Irish Belle

Solid Light Fawn Female

IAR: 211945 DOB: 23.03.16



Peruvian Sire

Halcyon Stars & Stripes SW

Sire: Shanbrooke Peruvian Nano SW

Dam: Bumble Hill Irish Eyes SDF

Peruvian Dam

Bumble Hill Leprechaun SLB

Mated: Open

Fleece: Nov 2022 M25.5 SD 5.0 1.75kg Skirted Saddle Trim On

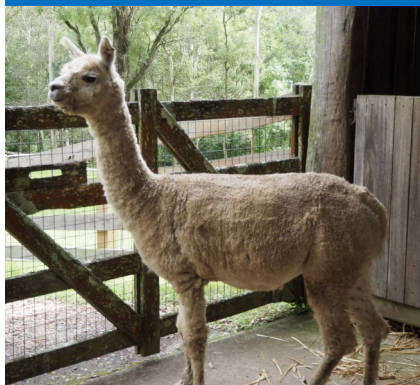
Irish Belle is a stylish female with a bright, lustrous and very dense solid light fawn fleece. One of the last of Nano's female progeny, she has a beautiful combination of his silky handle and Irish Eye's impressive density. Belle has been awarded multiple 1<sup>st</sup> ribbons in halter shows during her show career. Shearing just under 2kg of skirted saddle, she is ready to be mated.

Walkley Field Alpacas —Reserved

Lot 61 Walkley Gold Caviar

Solid Med Fawn Female

IAR: 241520 DOB: 12.05.18



Rosedean Sayonara SW

Shanbrooke Gold Perfection SMF

Sire: Futura Kittihawk SLF

Dam: Shanbrooke Society Caviar ET SMF

Windsong Valley Kitiyama SW

Shanbrooke Soc Shere Predict SMF

Mated: Open

Fleece: Nov 2022 M25.7 SD 4.2 1.75kg Skirted Saddle Trim On

Gold Caviar is a beautiful medium fawn female with an impressive set of genetics in her background. A mating with a fawn male should produce something special from this girl.

Walkley Field Alpacas —Reserved

Lot 62 Walkley Field Loucine

Solid White Female

IAR: 252205 DOB: 03.06.19



Rosedean Sayonara SW

Benleigh Legend SW

Sire: Futura Escobar SW

Dam: Walkley Field Lucienne SW

Futura Flirtation SW

Windsong Valley Layla SW

Mated: Open

Fleece: Nov 2022 M22.6 SD 5.1 1.6kg Skirted Saddle Trim On

A lovely female that in the last breeding season has produced our lowest micron weanling to date at 12.8 micron. She is the product of the WA male, Futura Escobar and a stylish Benleigh Legend female. Bold crimping and silky lustrous fleece. A chance to acquire some unique genetics.

Walkley Field Alpacas —Unreserved



Lot 63 Walkley Field Sweet Illusion

Solid Light Fawn Female

IAR: 252208 DOB: 16.04.20



Banksia Park VCK Colarado SW Premier Kiwi Legend SW  
 Sire: Forestglen Illuminate Dam: Kurrawa Legends Sweet As SLB  
 Forestglen Ilaria SW Kurrawa Sweet She Is SDB

Mated: Open

Fleece: Nov 2022 M20.7 SD 4.3 2.6 Skirted Saddle Trim On

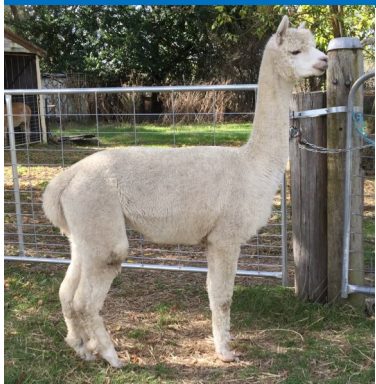
An exceptional female with enviable genetics. The first Illuminate female to be released, she has a beautiful lustrous & dense fleece. Her Dam is a lovely Kiwi Legend female, who has also passed on that silkiness to hand. Shearing an impressive 2.6kg of skirted saddle, she is ready to produce stunning progeny.

Walkley Field Alpacas —Reserved

Lot 64 Silcron Andromeda

Solid White Female

IAR: 205886 DOB: 17.04.15



Benleigh Lorimer Silcron Charango  
 Sire: Elysion Jupiter Dam: Silcron Antara  
 Benleigh Jubilation Atalaya 'Athena'

Mated: Open

Fleece: M21.4 SD 4 CF 96.8% Trim On

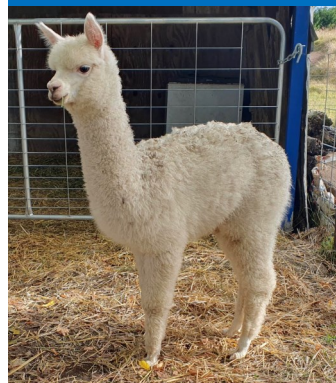
Sired by the renowned 'Jupiter', Andromeda is an upstanding female carrying valuable genetics. She has faultless conformation and good coverage of fine fleece. Unfortunately, due to numerous relocations she has not been joined for several years. Her first cria was ultrafine showing the potential Andromeda has to produce well in future.

Silcron Alpaca — Unreserved

Lot 65 Silcron Seraphine

Solid White Female

IAR: 247851 DOB: 20.11.22



Rosedean Sayonara Silcron Charango  
 Sire: Futura Momentum Dam: Silcron Antara  
 Futura Chiffon Atalaya 'Athena'

Mated: Maiden

Fleece: Untested

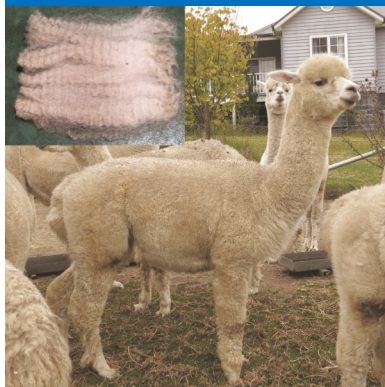
Seraphine is a well grown and well conformed weanling from a reliable and productive maternal line. At 15 years of age her dam retains a fine fleece (22m) with good length. Her full sister measured 13.7m, 3.3sd on her first fleece and I expect Seraphine will likewise be ultrafine. Fabulous opportunity here.

Silcron Alpaca —Unreserved

Lot 66 Oak Grove Phoebe

Solid White Female

IAR: 242284 DOB: 06.04.21



Windsong Valley Kenjiro Ellen Vale Palladium  
 Sire: Windsong Valley Amadeus SW Dam: Poets Corner Xanthe LF  
 Glenhaven Narnia Poets Corner Sabrina

Mated: Maiden

Fleece: Nov 22 2nd M18.4 SD 3.7 CF 99.5% SL 100mm Trim On

Typey quiet female with a strong stay fine genetic background. She is sired by the well known incredibly dense fleeced WV Amadeus, still holding 24M at 15 years old. Phoebe's dam Xanthe is a smaller female 21M on her 12<sup>th</sup> fleece & a granddaughter of the stay fine sire Winterbrook Prince John who was 19.6M on his 11<sup>th</sup> fleece.

Oak Grove Alpacas —Reserved

Lot 67 Oak Grove Sakura

Solid White Female

IAR: 242281 DOB: 29.03.21



Banksia Park Pennant ET Gidleigh Lane Aztec  
 Sire: Elsendale Patric SW Dam: Gidleigh Lane Hotaru SW  
 Elsendale Perla Gidleigh Lane Bianca

Mated: Maiden

Fleece: Nov 22 2nd M17.2 SD 3.0 CF 100% SL 100mm Trim On

This girl is perfect for those wanting to breed for longevity of fine fibre. Sakura is a well grown friendly female who will add a wealth of stay fine genetics to any herd. She has a low SD like her sire Patric – a stay fine male holding M21.6, SD 3.6 on his 13<sup>th</sup> fleece with beautiful style. Sakura's dam is from generationally fine lines & M22.8 on her 7<sup>th</sup> fleece. Sakura's full brother is a certified stud male.

Oak Grove Alpacas —Reserved

Lot 68 Ambersun Pebbled Beach (APP)

Apps Wh/MBr/DF (C) Male

IAR: 232150 DOB: 03.05.14



Erehwon Silverado Jolimont Warrior  
 Sire: Leaenna Armani Dam: Ambersun Caramel Eclipse  
 Leaenna Blush Ambersun Eclipse

Fleece: 2022 9th Fleece M23.8 SD 4.7 CV 19.7 CRV 42.9% Trim On

Stylishly patterned breeding male from Ambersun's well established appaloosa breeding program (over 20 years). Still holding good fineness and character into mature years.

First fleece: micron 14.8, SD 3.6, CV 24.4.

Ready and eager to breed.

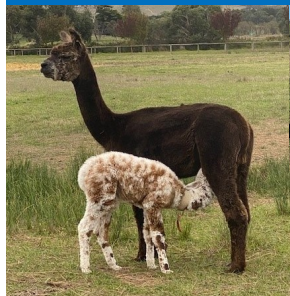
Ambersun Alpacas —Unreserved

## Lot 69 Ambersun Encrypted APP

App DBr/True Blk/DF Female + f cria

IAR: 232325

DOB: 14.02.16



Erehwon Silverado

Ambersun Cuba

Sire: Leaenna Armani

Dam: Ambersun Praline

Leaenna Blush

Compass Lindt

Mated: LMD 24.04.23 to Grand Flowerdale Torpia APP

Fleece: 7th Fleece 2022 M21.5 SD 3.7 CV 17.3 CRV 43% Trim On

From the established appaloosa breeding program (over 20 yrs) at Ambersun Alpacas.

A brindle appaloosa dam (black/br spots) with an attractive head and square muzzle. Produces a fine for age, soft handling, highly consistent fleece with low mic variation (CV17.3%)

Proven capacity to pass on the appaloosa gene, with her strikingly coloured leopard appaloosa female cria at foot (sire: Ambersun San Juan). Cria already displaying stylish fleece qualities.

Ambersun Alpacas —Reserved

Mated to Grand Flowerdale Torpia (leopard appaloosa), provides for a delightful 3 in 1 package with good appaloosa genetic heritability.

## Lot 70 Ambersun Tiger's Chase APP

App Wht/DF/LBr Female

IAR: 244203

DOB: 02.12.18



Benleigh Bellisimo

Jolimont Warrior

Sire: Ambersun Heritage ET

Dam: Ambersun Tiger Lily

Ambersun Peruvian

Ambersun Safari

Roxette

Mated: LMD 24.06.22 to Grand Flowerdale Torpia APP

Fleece: 4th Fleece 2022 M18.9 SD 4.6 CV 24.4 CRV 43.8% Trim On

Multiple generations of the appaloosa gene embedded in her pedigree, she displays a uniform leopard appaloosa coat patterning.

Excellent fleece fineness retained into her 4<sup>th</sup> fleece.

Mated to Grand Flowerdale Torpia (leopard appaloosa), with cria due early June 2023.

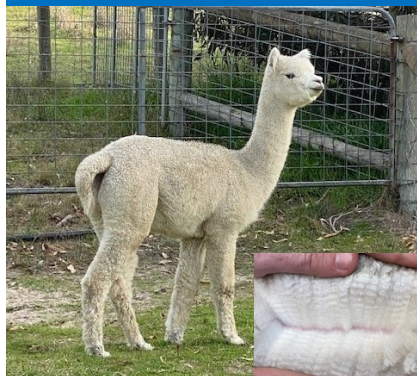
Ambersun Alpacas —Unreserved

## Lot 71 Ambersun Confidence

Solid White Female

IAR: 249095

DOB: 20.12.20



Jolimont Warrior

Fine Choice Peruvian Ultimo

Sire: Ambersun Fortune Seeker

Dam: Ninbella Citrine

Ambersun Soul Seeker

Ninbella Cindy

Mated: LMD 01.05.23 to Andache Opulent (SWHT)

Fleece: 2nd Fleece 2022 M15.9 SD 3.7 CV 23.1 CRV 42.5% Trim On

A reluctant release from the Ambersun elite herd. Eyecatching and enticing, with well balanced and proportioned frame, and attractive well covered head with short, square muzzle.

Sired by the National Supreme Champion Ambersun Fortune Seeker, and with genetic influences of Jolimont Warrior and Fine Choice Peruvian Ultimo.

Ambersun Alpacas —Reserved

Ultrafine second fleece (15.9 micron)



Lot 72 Mapa Chemise Melody

Solid White Female

IAR: 253427 DOB: 29.03.22



Suncloud Jandino

Kurrawa Legends Challenge

Sire: Mapa Scout

Dam: Goldleaf Desert Chemise

Stansfield Park Jubilee

Goldleaf Desert Harmony

Mated: Maiden

Fleece: TBA

This lovely young female has a bright white fleece which is producing excellent length and density.

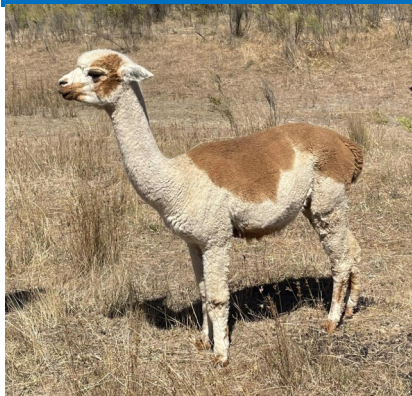
She is a sweet girl and will happily chat to you in the paddock, you will also notice she has many of the WA genes in her background could be very useful in diversifying bloodlines .

Mapa Alpacas —Reserved

Lot 73 Mapa Lucky Punch

Fancy White/Med Fawn  
Female

IAR: 246676 DOB: 12.05.19



Jolimont Gianmarco

Blue Grass Cushla

Sire: Yass Valley Horatio

Dam: Yass Valley Autumn

Yass Valley Archimedes

Yass Valley Laylil

Mated: Will be mated to Lillyfield Crossfire

Fleece: M18.6 SD 4.0 CV 21.8 CRV 45.3 CF 98.9% Trim On

Lucky Punch has a very attractive fleece that is even across the colours in micron with a med frequency style producing excellent lustre on a correct frame. She has been successfully shown as a junior and will be mated to Crossfire who himself is also a high awarded black stud male.

This girl is for the fancy breeders and well worth a look.

Jnr Female Fancy—1st Boorowa 2020

Jnr Female Fancy—1st Gunning 2020

Jnr Female Fancy—2nd Wodonga 2020



Mapa Alpacas—Reserved

Lot 74 Mapa MZ Orla

Solid Med Fawn Female

IAR: 253311 DOB: 05.05.21



ILR Snowmass Elite  
Transcendence

Hawthorn Cottage IAM

Sire: Patagonia Elite Moritz

Dam: Grassington Emmadale

Patagonia Midnight Sun  
ET

Bonny Belle Madeline

Mated: Maiden

Fleece:

This young girl is a nice medium fawn and has a presence about her in the paddock as she stands tall, taking after her sire, Patagonia Elite Moritz. He is a blue ribbon and broad ribbon winner and has done well at all his shows.

Her fleece is fine and med frequency, very similar to her sires, she will go well over a dense male to take her to the next level.

Mapa Alpacas —Reserved

Lot 75 Goldleaf Ice Ice Baby

Solid White Female

IAR: 227707 DOB: 23.04.17



Faversham Armani

Brookwood Moonraker

Sire: Goldleaf Nobility

Dam: Banksai Park SXC5 Tango  
Moon

Qualup Elly

Banksia Park SXC Tango  
Tango

Mated: LMD 18.12.22 to Patagonia Elite Lone Star

Fleece: M22.2 SD 4.0 CV 18.0 CRV 44.0 CF 95.5% Trim On

Due to her being pregnant at the moment she is living up to her name ! This girl is a solid, well balance female, with bright, lustrous fleece with density as well.

This girl is a great mum and always plenty of supplies and a real doer !

With the Patagonia Lone Star mating which is currently not offered outside you should have a show ring progeny from her.

Mapa Alpacas —Reserved

Lot 76 EP Cambridge Mystique

Solid Dark Fawn Female

IAR: 258845 DOB: 02.06.21



Eastwinds Snowstorm  
SW

EP Cambridge Fire Hunter  
SW

Sire: Xanadu P Aristide SW

Dam: EP Cambridge Miss Hunter  
SW

Xanadu P Courant SW

EP Cambridge Mistress  
Caesar SW

Mated: Maiden

Fleece: M14.6 SD 3.2 CV 23.2 CRV 36.7 CF 100% Trim On



Ultra-fine, ultra-bright, dense, high amplitude and highly aligned....it's no mystery why this young female has it all. An exciting release sired by Aristide with a pedigree containing Fire Hunter, Caesar and Stravinsky...Mystique was always going to have an advanced fleece. Combined with a beautiful head and frame this female is the complete package.

EP Cambridge —Reserved

Lot 77 EPC Pete's Promise

Roan Female

IAR: 258843 DOB: 19.05.21



MFI Pistol SBLK

Windsong Valley Firedragon  
SLF

Sire: Red Granites Pecos Pete  
SBLK

Dam: EP Cambridge Dawn Promise  
SMF

Presidio's Ausable  
Pirouette SBLK

EP Cambridge Just My Style  
SLF

Mated: Maiden

Fleece: M16.8 SD 4.1 CV 24.5 CRV 41.3 CF 100% Trim On



Pete's Promise is the first release from our USA National Show winning black male Pecos Pete. She is phenotypically beautiful packing a long, fine, high amplitude fleece across an upstanding frame. She combines some of Australia's most influential white genetics with fresh, unique colour genetics. Using this line to produce elite colour is tried and tested with both her maternal sisters producing beautiful grey cria. This female promises to deliver.

EP Cambridge —Reserved



Lot 78 EP Cambridge Sweet Cheeks

Solid Med Brown Female

IAR: 258841

DOB: 05.05.21



Sire: Windsong Valley Fire-dragon SLF  
EP Cambridge Hidden Dragon RN  
Wyterrica Georgianna SMB

Dam: EP Cambridge King Slayer SBLK  
EP Cambridge Rosy Cheeks SMB  
EP Cambridge Rosy SLF

Mated: Maiden

Fleece: M15.6 SD 3.2 CV 20.8 CRV 43.1 CF 100% Trim On

Just like her sire, a National Champion Colour Supreme in both halter and fleece, this female screams “look at me” with a very correct head and frame. She’s not only inherited the look but also the fleece. Beautifully even in colour, she exhibits a bright fleece with a well-defined crimp style coupled with great density and length. This female’s progeny are sure to hit the sweet spot.

EP Cambridge —Reserved

Lot 79 EP Cambridge Vision of Beauty

Solid Dark Fawn Female

IAR: 257501

DOB: 08.05.20



Sire: EP Cambridge Risk Taker  
EP Cambridge Voyager SDF  
EP Cambridge Starsky Lass ET SW

Dam: Jolimont Gianmarco SW  
EP Cambridge Dawn Beauty SW  
EP Cambridge Ooh La La SDF

Mated: Maiden

Fleece: M16.3 SD 3.4 CV 20.6 CRV 45.4 CF 100% Trim On

With a show team producing dam and a sire who was a National Supreme Fawn Fleece winner, it’s not hard to see why this female is beautiful. Super bright, fine, highly defined crimp style that is even from head to toe. With a pedigree featuring a veritable who’s who of the most pre-potent white genetics this maiden’s is a powerhouse of potential.

EP Cambridge —Reserved



Eastwinds Snowstorm SWJolimont Commisario SW

Sire: Xanadu P Aristide SWDam: EP Cambridge Composure SW

Xanadu P Courant SWPrimavera Jacinta SW

Mated: Maiden

Fleece: M13.1 SD 3.2 CV 24.3 CRV 58.8 CF 100% Trim On



It's easy to be flattering when describing this female. She exhibits a bright, high amplitude, beautifully dense fleece that opens in bundles wherever you look. No surprise when her sire is Aristide. Compliment is an extremely exciting maiden with huge potential and offers an excellent opportunity to secure the most current and proven white genetics.

EP Cambridge —Reserved



GLR Rastamon SBLKEP Cambridge Bolero BLK

Sire: GLR Django SBBDam: EP Cambridge Xtraordinary SDB

Platinum Delilah LGMundawora X-Quisite SDB

Mated: Maiden

Fleece: M20.0 SD 4.8 CV 24.0 CF 96.2% Trim On



This female is an extremely rare offering. Not only is she an EP Cambridge suri but one with unique USA genetics. Xtreme is the first release by our USA black suri male Djano. With a depth of black and colour genetics this female is a must for the coloured breeder looking to inject new bloodline.

EP Cambridge —Reserved

Lot 82 EP Cambridge Harmonic

Solid Dark Brown Female

IAR: 258844

DOB:

21.05.21



Windsong Valley Fire-dragon SLF

EP Cambridge Infamy SDB

Sire: Marquez Nicolas SBLK

Dam: EP Cambridge Infamy Lass SMB

Marquez Honorata SBLK

Ailahtan Hayley SDB

Mated: Maiden

Fleece: M15.3 SD 2.9 CV 18.8 CRV 42.2 CF 100% Trim On



Only the third progeny to be released by double National Best Black male Nicolas, himself by the immortal Firedragon. She exhibits a high frequency crimp style. Her distinct lack of primaries, ultra-fine micron and SD give this female an exquisite handle. Pedigree and phenotype, this female hits the right notes.

EP Cambridge —Reserved

**Thanks to the Vendors for Making Available,  
These Outstanding Selections for this Year's Line Up .....**

***Breeders Choice Alpaca Auction.***

***Choices, Choices, Choices.***

***Now it is up to you the Buyers***

**Deciding what to Bid On.**

**Deciding on How Many to Bid On.**

**Deciding on what Bloodlines & Colours to Bid On.**

**Bid Online Across Australia & World Wide.**

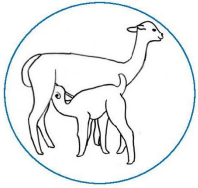
**Bidding Online Requires you to Register.**

**Register & Bid Online : [www.auctionsplus.com.au](http://www.auctionsplus.com.au)**



## **BREEDING HERD OF HUACAYA ALPACAS**

### **MONGA ALPACAS**



#### **FINE FLEECE BREEDERS**

INVITATION FOR EXPRESSION OF INTEREST FROM PERSONS INTERESTED IN PURCHASING A SELECT HERD OF 12 WHITE/LIGHT FAWN MATED HUACAYA

THESE FEMALES ARE BETWEEN 3 AND 8 YEARS OLD

FD RANGE: 19.2 TO 24.3—AVERAGE 22.2 MICRONS (TRIM OFF)

SD RANGE: 4.2 TO 5.8—AVERAGE 5.2 MICRONS (TRIM OFF)

MATED TO 4 DIFFERENT GENETIC LINES WITH AWARDS FOR SUPREME MOST VALUABLE COMMERCIAL FLEECE AND NUMEROUS BROAD RIBBONS

THIS WOULD BE AN IDEAL PACKAGE FOR NEW BREEDERS OR THOSE INTERESTED IN INCREASING THEIR RANGE OF GENETICS.

For more information, email Bob at [mongaalpacas@bigpond.com](mailto:mongaalpacas@bigpond.com)

### **TRIM ON vs TRIM OFF**

**Fleece quality will be improved when breeding decisions are based on test results from the OFDA2000 instrument with the trim high setting turned OFF.**

**When the setting is turned ON the inboard computer trims out the highest primary fibre diameters from the results. This can represent up to 10% of all the primary fibres in the sample. It results in a lower value for FD and its SD and produces a shorter tail on the histogram. It also results in lower values for other parameters such as CE, CEM and CV and a higher value for the CF. For an established herd containing the full range of ages, about 20% of the herd can have SD values below 4 microns. About 50% can be between 4 and 5 microns and anything above this can be acceptable if the fleece has other exceptional qualities such as length or density. The trim ON setting can give a false impression of the fleece quality by not including the coarsest primary fibres in the results.**

**The only way to obtain reliable test results is to have a sample tested with the trim high setting turned OFF. This ensures that all the coarse primary fibres are included in the results. There will be considerably fewer SD values below 4 microns and can represent less than 5% of a herd and about 75% of a herd can have SD values split between 4 to 5 and 5 to 6 microns.**

**A quality fleece will have similar results for both trim ON and trim OFF however this cannot be confirmed unless trim OFF results from a midside sample are available**

# EP Cambridge Alpaca Stud

est. 1993

The Breeders Choice Alpaca Auction 2023 offers the chance to access these fresh USA genetics, including some never previously released. These champion winning males are proving themselves in their progeny. Take advantage of the chance to add these influential bloodlines to your breeding.



## RED GRANITE'S PECOS PETE

Matthew and Cathy selected this multi-champion black male at the 2018 AOA National Show where he won his class. He met the exacting criteria of an advanced, high frequency fleece style coupled with the density we look for in our breeding. His quality is no surprise with two multi-champion parents. His sire is the renowned MFI Pistol who sold at the USA Breeders Choice Auction for \$230,000 USD. Don't miss this exciting opportunity to inject these fresh genetics into your herd.



## GLR DJANGO

You might not expect to find a suri at EP Cambridge, but they have always been a passion of Matthew's. This USA champion black male was selected to take the helm of our "in-house" suri herd with the depth and quality of his coloured pedigree. His daughter, EP Cambridge Xtreme, offers an excellent opportunity to secure a young female with these unique genetics.



## XANADU P ARISTIDE

As the sire of EP Cambridge Hoedown, the current National Supreme Champion, this male needs little introduction. First released at last years BCAA, Aristide's offspring are consistently proving themselves as carrying advanced fleece characteristics.....they are everything we expected them to be. This year we are offering breeders the chance to secure two elite females by this super sire in both white and fawn.

**Breeders Choice Alpaca Auction**

Auction—Saturday 22nd July 2023

Mail : Paul Maslen

Australian Alpaca Association

Ph: 0417 862 096

[www.alpaca.asn.au](http://www.alpaca.asn.au)

**POSTAGE**

**PAID**

**AUSTRALIA**