



Australian Alpaca
ASSOCIATION

Australian Alpaca Association Ltd.

Showing Rules Manual

Effective: 1 January 2021

INTRODUCTION

The Showing Rules Manual is a publication of the Australian Alpaca Association Ltd. that has been prepared by the AAA Ltd. Showing and Judging Committee. It has been designed to ensure that members are aware of information important to the activity of showing alpacas.

Whilst this manual contains rules that should be applied in all shows that are run under the auspices of the Association, the manual also contains several sections that have been included for the guidance of members.

This version of the manual replaces all previous versions of the Showing Rules Manual.

Section 1 – 5 inclusive of the Showing Rules Manual are deemed to be Rules

This manual is to be read in conjunction with the version of the AAA COVID Manual that applies at the time the show is organised and held. Convenors, Stewards and the relevant Committees should be aware that the AAA COVID Manual may be updated as regulations change and should endeavour to ensure they are utilising the most recent edition of the AAA COVID Manual at all times.

Table of Contents

| | |
|---|----|
| INTRODUCTION | 1 |
| SECTION ONE: SHOWING RULES | 6 |
| GLOSSARY | 6 |
| SHOWING RULES | 8 |
| SHOW CONVENORS | 8 |
| Rule 1: Conduct of a Show | 8 |
| Rule 2: Minimum Numbers to Plan a Show..... | 8 |
| Rule 3: Distribution of Show Schedule | 8 |
| Rule 4: Animal and Fleece Sections | 8 |
| Rule 5: Management of Show Timetable by Convenor | 9 |
| Rule 6: Writing of Show Catalogue | 9 |
| Rule 7: Distribution of Show Catalogue | 9 |
| Rule 8: Appointment of Judge..... | 9 |
| Rule 9: Number of Judges Required..... | 10 |
| Rule 10: Judge's Chaperone | 10 |
| Rule 11: Animal Welfare | 10 |
| JUDGES | 10 |
| Rule 12: Judge's acceptance of invitations to judge..... | 10 |
| Rule 13: Judge not to be houseguest of Exhibitor..... | 10 |
| Rule 14: Judge/Apprentice Judge and immediate family/partner not to exhibit | 11 |
| Rule 15: Actions of Judge before judging begins | 11 |
| Rule 16: Judge not to refer to Show Catalogue | 11 |
| Rule 17: Persons who may accompany Judge into the judging arena | 11 |
| Rule 18: Handler of animal not to address Judge | 11 |
| Rule 19: Removal of alpaca or person from judging ring..... | 11 |
| Rule 20: Unsound exhibit..... | 11 |
| Rule 21: Class not to be re-judged..... | 12 |
| Rule 23: Protests by a Judge..... | 12 |
| Rule 24: Fleece Judging | 12 |
| Rule 25: Judge's discretion for the award of placings | 12 |
| Rule 26: Champion Awards | 12 |
| STEWARDS..... | 13 |
| Rule 27: Stewards may be Exhibitors | 13 |
| Rule 28: Allocation of pens/movement of animals..... | 13 |
| Rule 29: Performance of animal inspections..... | 13 |
| Rule 30: Stewards' inspection checklist | 13 |
| Rule 31: Isolation of lice- infested alpacas from show..... | 13 |
| Rule 32: Persons permitted in pens during inspection | 14 |
| Rule 33: IAR tag missing | 14 |

| | |
|---|----|
| Rule 34: Eligibility to exhibit an animal in a class | 14 |
| Rule 35: Combining of classes | 14 |
| Rule 36: Disqualification of an exhibit by Steward..... | 14 |
| Rule 37: No identification of prize-winning animals to be made prior to Supreme Champion Award..... | 14 |
| Rule 38: Johnne's Disease | 14 |
| Rule 39: Misconduct by Exhibitor or Member..... | 14 |
| Rule 40: Protests | 15 |
| Rule 41: Fleece sampling | 15 |
| EXHIBITORS | 16 |
| Rule 42: Registration of exhibits | 16 |
| Rule 43: Ownership of exhibits | 16 |
| Rule 44: Disqualified exhibit..... | 16 |
| Rule 45: Disqualified Exhibitor | 16 |
| Rule 46: An Exhibitor must assist in inspection..... | 16 |
| Rule 47: Persons not to enter or exit a judging ring once a class begins | 16 |
| Rule 48: Exhibit handlers..... | 17 |
| Rule 49: Exhibit Numbers | 17 |
| Rule 50: Handlers' attire | 17 |
| Rule 51: Behaviour of Exhibitors, etc. | 17 |
| Rule 52: Removal of fleece..... | 17 |
| Rule 53: Companion animals and dogs | 18 |
| Rule 54: Advertising | 18 |
| Rule 55: Order of Judging..... | 18 |
| Short Fleece shows | 18 |
| Rule 57: Animals Permitted in the Show Ring..... | 18 |
| Rule 58: Correct Animal Colour Classifications..... | 18 |
| Rule 59: Mature Females | 19 |
| SECTION TWO: SHOW FORMAT and CLASSES | 20 |
| SHOW FORMATS | 20 |
| Age Championship Shows | 20 |
| Coloured Championship Shows | 20 |
| Classes to be Offered | 20 |
| SHOW CLASSES | 21 |
| AGE CHAMPIONSHIP SHOW | 21 |
| SURI HALTER SECTION | 21 |
| AGE CHAMPIONSHIP SHOWS | 27 |
| HUACAYA HALTER SECTION | 27 |
| AGE CHAMPIONSHIP SHOW - HUACAYA FLEECE SECTION..... | 30 |
| <u>MANDATORY</u> HUACAYA FLEECE CLASSES..... | 30 |

| | |
|--|----|
| Age Championship Show - OPTIONAL Huacaya Fleece Classes..... | 31 |
| SURI HALTER SECTIONS | 32 |
| COLOUR CHAMPIONSHIP SHOW - <u>MANDATORY</u> SURI HALTER CLASSES..... | 32 |
| COLOUR CHAMPIONSHIP SHOW - MANDATORY SURI FLEECE CLASSES..... | 35 |
| COLOUR CHAMPIONSHIP SHOW | 36 |
| HUACAYA HALTER SECTION | 36 |
| COLOUR CHAMPIONSHIP SHOW - <u>MANDATORY</u> HUACAYA HALTER CLASSES | 36 |
| COLOUR CHAMPIONSHIP SHOW - MANDATORY HUACAYA FLEECE CLASSES | 39 |
| COLOUR CHAMPIONSHIP SHOW - OPTIONAL HUACAYA FLEECE CLASSES..... | 40 |
| JUNIOR HANDLER COMPETITION | 40 |
| SECTION THREE: CLASS DEFINITIONS | 41 |
| Age Championship Shows | 41 |
| Best of Colour Classes under Age Championship Show Format | 41 |
| Sire's Progeny Class | 41 |
| Dam's Progeny Class | 41 |
| Entry and Entry Fees for Progeny Group | 42 |
| Most Valuable Fleece Class (separate Suri and Huacaya Classes)..... | 42 |
| Sire's and Dam's Progeny Fleece Classes | 42 |
| Coloured Championship Shows | 43 |
| Sire's Progeny Class | 43 |
| Young Judge Competitions | 43 |
| Junior Handler Classes | 44 |
| SECTION FOUR: JUDGING CRITERIA..... | 45 |
| Alpaca Halter Classes Judging Criteria..... | 45 |
| Alpaca Fleece Classes Judging Criteria..... | 45 |
| Most Valuable Fleece Class Judging Criteria..... | 46 |
| Sire's and Dam's Progeny Fleece Class Judging Criteria | 46 |
| Judging protocol for Fleece Group classes | 46 |
| Young Judges – Judging Criteria | 46 |
| Junior Handler Classes..... | 47 |
| Suggested Junior Handlers' Course | 47 |
| HUACAYA AND SURI CONFORMATION | 48 |
| Disqualifying Faults | 50 |
| Points of the Huacaya Alpaca..... | 51 |
| Bone Structure of the Alpaca | 52 |
| HUACAYA FLEECE | 53 |
| SURI FLEECE | 53 |
| SECTION SIX: CONDUCTING A SHOW | 55 |
| Alpaca Show Classes | 55 |
| Minimum Number of Entries | 55 |

| | |
|---|-----------|
| Alpaca Show Entry Forms | 55 |
| Format: alpaca classes | 55 |
| Format: fleece classes | 55 |
| Insurance | 56 |
| Risk Assessment..... | 56 |
| Steward General Information | 56 |
| Main duties of Stewards | 56 |
| Procedures for Sampling Fleeces for Show | 57 |
| Championship Sashes and Prize Ribbons (Age Championship Shows) | 58 |
| Suri Championship Awards for Major Shows (Nationals and Royals) | 58 |
| Additional Suri Fleece Champions (for Major Shows) | 58 |
| Huacaya Championship Awards..... | 59 |
| Additional Huacaya Fleece Champions (for Major Shows) | 59 |
| Non-Championship Awards | 59 |
| No. of Exhibits Prizes which may be awarded | 60 |
| Ribbon Colours..... | 60 |
| Recommended Suri Placing Running Sheet..... | 61 |
| Recommended Huacaya Placing Running Sheet..... | 64 |
| Alpaca Fleece ~ Micron / Annualised Weight Matrix..... | 67 |
| SECTION SEVEN: EXHIBITOR GENERAL INFORMATION..... | 68 |
| Preparing an alpaca for showing..... | 68 |
| EXHIBITOR'S CODE OF CONDUCT (Appendix A) | 70 |
| Suri Fleece Judging Score Card | 71 |
| HUACAYA FLEECE JUDGING SCORE CARD | 72 |

SECTION ONE: SHOWING RULES

GLOSSARY

In these Rules, paragraph headings have no significance in interpretation of their meaning and words and expressions have the same meanings as in the Rules of the Australian Alpaca Association Ltd.

| | |
|----------------------------|--|
| Age of Exhibit | means for example, if exhibit on day of show is 7 months and 16 days old, the animal exhibit number card will display age as '7', exhibit having attained 7 months. |
| Apprentice Judge | a person who is being trained to be a Judge. At shows the Apprentice Judge is under the direct supervision of the nominated judge and has no input into final judging decisions, even though the apprentice may be called upon from time to time, at the nominated Judge's discretion, to give oral reasoning for the Judge's placing. The Apprentice Judge shall not officiate as a Judge at any AAA Ltd. sanctioned shows until fully qualified as an AAA Ltd. approved Judge. |
| Association | the Australian Alpaca Association Ltd. |
| Association Representative | a person appointed by the Show Society. |
| Authorised Agent | the person authorised to enter animals and fleeces on behalf of the owner (exhibitor). |
| Chief Steward | the person responsible for the management of the Show on the day and adherence to these rules. (May also be the Convenor.) |
| Convenor | the person responsible for the organisation of the show. |
| eAlpaca | on-line International Alpaca Register (IAR) and show system. |
| Entire | all genitalia shall be complete, properly formed and proportioned for normal reproduction. |
| Exhibit | an animal or a fleece, as the class in which the exhibit is competing requires. |
| Exhibitor | the financial member in whose herd an entire or wethered animal is registered or, in the case of fleeces, was at the time of shearing. |
| Fleece Steward | a person who is responsible for assisting the fleece judge in one or more of the following capacities: placing fleeces in their appropriate classes, fleece weighing and recording the Judge's remarks and scores on the Show Score Sheet. |
| Immediate Family/Partner | a spouse, descendant, parent, grandparent, employer or employee or person who has a share of ownership with the Judge in the animal being judged. |

| | |
|--------------------|---|
| Inspection Steward | the person responsible for inspecting alpacas prior to the commencement of animal judging. |
| Judge | the person appointed by the association to judge classes. |
| Ring Steward | the person controlling activities in the show ring during animal judging. |
| Show Society | the body under the auspices of which the Show is being conducted (in the case of agricultural shows). |
| Show Catalogue | the written records of each class and details of every animal and fleece entered as exhibits. |
| Show Schedule | the conditions of entry and classes prescribed by the Association for the conduct of Shows. |
| Wether | a male animal that has been castrated. |

SHOWING RULES

The following Rules pertain to the responsibilities of the four major groups involved in the preparation and conduct of a Show: Show Convenors, Judges, Stewards and Exhibitors. Where appropriate, cross references on overlapping subject matter are given. However, for a full understanding of the conduct of shows run under the auspices of the Association, members should familiarise themselves with all the material.

SHOW CONVENORS

Convening a New Show

Convenors of new (or not Regionally organised) shows wishing to use AAA Ltd. Judges must obtain permission from their Regional Committee sanctioning the show.

The Regional Committee is to be provided with a copy of the Schedule, a general description of the venue, an event budget and a COVIDSafe Plan that complies with AAA and relevant State requirements. A copy of the budget and COVIDSafe Plan must be provided to the AAA office when the Regional Committee have endorsed the Show. The AAA office will then approve the Show in eAlpaca.

Alpaca halter or fleece shows that are not endorsed as AAA shows, are not able to utilise an AAA judge. Neither are they able to utilise AAA support and resources, including the AAA logo and insurance.

The Committee must be assured that members convening a show have at least attended an approved AAA Ltd. Convenors and Stewards' training course or can prove show-convening experience.

Rule 1: Conduct of a Show

A Show shall be run according to procedures set down in the Show Schedule.

Rule 2: Minimum Numbers to Plan a Show

Halter classes:

A minimum of 50 entries overall

A minimum of 10 suri to run suri classes

A minimum of 10 huacaya to run huacaya classes

ie. There must be a minimum of 10 suri/huacaya with the other 40 huacaya/suri to make up the numbers.

Fleece classes:

A minimum of 20 entries overall

A minimum of 10 suri fleeces to run suri classes

A minimum of 10 huacaya fleeces to run huacaya classes

Fleeces cannot be judged on the same day as halter classes by the same judge (see Rule 9)

Rule 3: Distribution of Show Schedule

A Show Convenor shall supply to the Show Society a copy of the Association's Show Schedule containing conditions of entry, classes, entry form and health declaration.

Rule 4: Animal and Fleece Sections

The Show Convenor shall ensure that all exhibits (animals and fleeces) are eligible to compete and are exhibited in sections as determined by the Association. All alpacas must be registered on eAlpaca. All fleeces being exhibited (including wether fleeces) must be from alpacas registered on eAlpaca and be the bona fide property of the Exhibitor. All Exhibitors must be AAA Ltd. financial members.

The Show Convenor shall ensure the provision of animal exhibit number cards complete with Age of Exhibit in months written on before issuing to Exhibitors.

Rule 5: Management of Show Timetable by Convenor

Show Convenors must manage their show timetable according to the number of entries received for both fleece classes and halter classes. In doing so they will have regard for:

- a. judging start and finish times
- b. the number of alpacas and fleeces that a Judge can reasonably be expected to judge in one day
- c. scheduled breaks for Judges and Stewards
- d. arrival and departure times for Exhibitors and inspection requirements for alpacas
- e. date of receipt for fleeces and stewarding/set-up/weighing requirements prior to fleece judging
- f. a preferred span of judging hours that does not exceed 8 hours judging per day (excluding breaks) if possible

Convenors should allow a minimum of 2 minutes per alpaca for an experienced Judge averaged over a whole day's judging (halter classes) and 4 – 5 minutes per fleece (fleece classes). These times allow for championship awards, but Best Colour Classes and Progeny Group awards are additional.

It will be necessary to allow more time for less experienced Judges, and additional time may be necessary if there are Apprentice, Judge Upgrade or Dual Judging requirements at the show.

If entries exceed expectations, convenors must be prepared to re-schedule start and finish times, perhaps split sections out for judging by two different judges or consider running the show over an extra day. If substantial changes need to be made to the advertised schedule for start times, extra days, different Judges etc. all Exhibitors must be notified of the changes prior to the show.

Rule 6: Writing of Show Catalogue

The Show Convenor shall ensure that a Show Catalogue is written that records each class, and details of every animal and fleece entered as exhibits.

Rule 7: Distribution of Show Catalogue

The Show Convenor shall have printed a number of Show Catalogues that is not less than the number of Exhibitors participating in the Show and shall be distributed to Exhibitors on the penning day of the Show, with additional copies made available to spectators.

Rule 8: Appointment of Judge

The Show Convenor shall make a request to the Showing and Judging Judge allocator for a selection of Judges three to six months prior to the show date, from which a Judge can be selected. As soon as possible after the judge is appointed the Convenor will complete a Judge Show Agreement form and send it to the judge. The completed form will be emailed to the convenor who will forward it to the Secretary, Showing and Judging Committee and the AAA Ltd. National Office.

The Judge shall be provided with a copy of the Show Catalogue Summary prior to attending the Show. This summary relates to numbers of animals in each class/section, with no indication of the identity of animals/exhibitors.

Rule 9: Number of Judges Required

Two Judges must be appointed if fleece and halter classes are to be judged on the same day.

Rule 10: Judge's Chaperone

The Show Convenor shall arrange for a chaperone to meet the Judge on arrival at the Show so that the Judge can be escorted to the Show Office and thereafter to the appropriate places for the duration of the Show.

Rule 11: Animal Welfare

Nothing elsewhere in these rules shall override the consideration that the health and welfare of an animal is of paramount concern and consideration of fleece length and other allowances shall be secondary in determining whether an animal shall be shown.

- a. A declaration is to be included on show entry paperwork:
i.e. 'I have inspected my exhibits and have determined that they are of sound health and are fit to attend this show'.
- b. If an alpaca at a show exhibits signs of ill health, as determined by the exhibitor or a steward, the Chief Steward must be notified immediately.
- c. If a judge has concerns about the condition or health of an alpaca that presents in the show ring, they must advise the Chief Steward as soon as is practicable.
- d. The Chief Steward will liaise with the exhibitor in evaluating the need for veterinary assistance, which, in the event of an obviously sick alpaca, will be called immediately. The Chair of SJC will decide as to whether all other exhibitors should be notified of the cause of illness.
- e. If an alpaca dies during the event the exhibitor will be required to obtain a post mortem report as to the cause of death. This report will be forwarded to the Chair of the Showing and Judging Committee as soon as possible. The Chair of SJC will decide as to whether all other exhibitors should be notified of the cause of death.
- f. At any time that a vet is called to an alpaca during a show the Chief Steward or Convenor will include details of this in their Post Show Report submitted to the Showing and Judging Committee.

JUDGES

Rule 12: Judge's acceptance of invitations to judge

A Judge shall avoid accepting an invitation to judge alpaca classes at more than one Show in a Region of the Association within a period of 6 months, except in the case where no other Judge is available.

Rule 13: Judge not to be houseguest of Exhibitor

A Judge who, after agreeing to judge alpacas or alpaca fleeces at a Show, receives an invitation to be the overnight houseguest of any alpaca owner, or invites an owner of alpacas to be the overnight house guest of the Judge, prior to judging, shall make appropriate enquiry to establish whether that person intends to exhibit or handle alpacas or alpaca fleece at that Show and shall decline or withdraw the invitation if the person does so intend.

Rule 14: Judge/Apprentice Judge and immediate family/partner not to exhibit

The Judge/Apprentice Judge and immediate family/partner shall not exhibit alpacas or alpaca fleece at any Show at which he or she is judging both alpacas and fleece. However, a

Judge/Apprentice Judge and immediate family/partner may enter alpacas at a Show if he/she is judging only fleece at that Show. An animal Judge/Apprentice Judge and immediate family/partner may enter fleece at a Show if he/she is judging only alpacas at that Show.

Rule 15: Actions of Judge before judging begins

- a. On arrival at a Show, the Judge shall meet the chaperone prior to proceeding to the Show Office.
- b. No person other than a nominated Show Official or the chaperone shall speak with the Judge, other than to exchange pleasantries, before judging of alpacas commences.
- c. Judges are permitted to attend functions held over the duration of multiple day events, on the understanding that they do not engage in any discussion regarding the current show or exhibits therein and are mindful of not allowing their time to be dominated by any particular breeder.

Rule 16: Judge not to refer to Show Catalogue

Show Officials shall take appropriate steps to ensure that the Judge has no opportunity to see the catalogue for alpacas at the Show and the Judge shall refuse to examine any catalogue that comes to his/her attention by any means, until judging is completed.

Rule 17: Persons who may accompany Judge into the judging arena

No person shall accompany the Judge into the judging ring except persons appointed for that purpose by Show Officials or the Association.

Rule 18: Handler of animal not to address Judge

The Judge may direct the immediate disqualification and removal from the judging ring of any exhibit whose handler addresses or attempts to address the Judge while the class is being judged, except in response to a request from the Judge.

Rule 19: Removal of alpaca or person from judging ring

The Judge may, in his or her absolute discretion, direct the removal of an alpaca or a person from the competition on the grounds of bad conduct.

Rule 20: Unsound exhibit

The Judge may, in his or her absolute discretion, direct the Chief Steward that an exhibit be removed from the judging ring on grounds of visible physical disfigurement or unsoundness, or being unfit to compete.

Rule 21: Class not to be re-judged

A class that has been judged shall not be re-judged. An alpaca that has been judged in the incorrect class due to exhibitor or stewarding error is disqualified from being re-judged later in the correct class.

The only exception to this is where the judge at his/her discretion moves an alpaca to an appropriate and correct later class on discovering an error in classification during the judging and before ribbons are awarded.

It is the exhibitor's responsibility to ensure they have the correct alpaca in the correct class for age and sex. Any doubt surrounding the eligibility or otherwise of an exhibit to participate in a particular class must be clarified before the alpaca enters the ring.

If an alpaca is exhibited in the wrong class and incorrectly receives an award, it will be disqualified and stripped of that award upon discovery of the error. The other awards in the class will not change as a result of this error, notwithstanding that there will be a gap in the correct placings. The only exception to this will be if the mistake is discovered before the class leaves the ring and the judge, at his/her discretion, may take the ribbon back from the disqualified alpaca and readjust the placing before the alpacas leave the ring.

Rule 22: Judge's decision is final

The decision of the Judge is final, and no protest shall be made in relation to it except on the grounds that a Judge has committed a breach of these Rules. The protest shall follow the procedures as laid out in the Protest Section of this Manual.

Rule 23: Protests by a Judge

A Judge may protest against an Exhibitor:

- a. in the case of an alleged infringement of the Rules of a Show at a Show not conducted by the Association, by lodging a protest in accordance with the requirements of the Show Society and/or
- b. in the case of an alleged infringement of these Rules, at a Show conducted by the Association, by lodging a written protest, as laid out in the Protest Section of this Manual.

Rule 24: Fleece Judging

Fleece judging score cards shall be used by all Judges. The Supreme Fleece title will automatically be awarded to the fleece that attains the highest score.

Rule 25: Judge's discretion for the award of placings

Judges may use discretion on the placings awarded in any class. Equal placings shall not be given. This applies to both animals and fleeces.

Rule 26: Champion Awards

A Champion award may be assigned from the first placed animals in the Section according to the Show Catalogue. A reserve Champion award may be awarded. It is at the judge's discretion whether to assign such awards.

STEWARDS

Rule 27: Stewards may be Exhibitors

Stewards, including Chief, Ring, Marshalling and Fleeces MAY exhibit at shows in which they are officiating if the following conditions are adhered to:

- a. Chief Steward - Must not be the handler of any animals at the show.
- b. Ring Steward - It is recommended that a Ring Steward refrains from being the handler of the exhibits. However, in circumstances where an Exhibitor is required to be the handler of their exhibits, then he/she cannot undertake the duties of Ring Steward until after the completion of judging of all their exhibits.
- c. Fleece Stewards cannot officiate as a Score Sheet Recorder when fleece/fleeces being exhibited by that person are being judged. On occasions where a Fleece Steward is exhibiting fleeces at a show, then two Score Sheet Recorders would alternate their duties where necessary ensuring transparency of records - i.e.: a person would not record the Judge's point score for their own fleeces.
- d. No animal or fleece belonging to a person officiating as a Chaperone to the Judge, shall exhibit at that show.

Rule 28: Allocation of pens/movement of animals.

It is the Stewards' role to allocate the correct pens to the Exhibitors upon arriving at the Show pavilion/tent. No swapping or altering of pens by the Exhibitors is allowed without permission of the Chief Steward. The allocation of pens and the movement of animals shall comply with the requirements of the Alpaca JD MAP.

Rule 29: Performance of animal inspections

Qualified Inspection Stewards shall perform the animal inspections at the time shown in the Show Schedule. Inspection Stewards may show animals in the show at which they are stewarding, but they must not inspect their own animals. If there is an incident with the inspection of an animal at a show, the Chief Steward must make the final decision.

Rule 30: Stewards' inspection checklist

The Stewards' checklist for the inspection of all animals shall include:

- a. Correct alpaca in allocated pen:
- b. Correct colour (according to the Association's official colour chart), sex and age for class entered (note: If the colour of an alpaca is in doubt stewards are to assign the animal to whichever class is to be judged first which will enable the Judge to decide in which class the animal should be allocated);
- c. Correct IAR number, matching that shown on the animal's registration certificate and the Show Catalogue; and
- d. Correct length of fleece for both huacaya and suri, as required by the rules for that show.

Rule 31: Isolation of lice- infested alpacas from show

The Chief Steward, upon finding infestation of lice on an alpaca during inspection at a Show, shall order the immediate removal from the venue of the infected alpaca and of any other alpaca present at that Show which belongs to the Exhibitor of the infested animal. If this is not possible or practical, such animals are to be relocated to an isolation pen set up for this purpose. All such animals are forbidden from being removed from this pen, unless for the purposes of leaving the venue.

Rule 32: Persons permitted in pens during inspection

Only the Exhibitor showing the alpaca, or his/her nominated representative shall be present in a pen while an inspection is being performed. The Steward inspecting and a person validating the information are to do so from outside the pen.

Rule 33: IAR tag missing

If there is no IAR tag present in the ear of an exhibit, official Association confirmation either in hard copy or electronically must be provided by the owner to the Chief Steward that the ear tag has been recently lost and that a new tag has been ordered and paid for.

Rule 34: Eligibility to exhibit an animal in a class

The Chief Steward shall re-classify an exhibit entered in a class for which it is not eligible immediately upon becoming aware of the irregularity at the time of inspection.

Rule 35: Combining of classes

If actual entries received for huacaya or suri types are 20 or more, the full range of colour or age classes should be implemented for that type. Insufficient entries or late withdrawals may render it necessary to combine showing classes. It is at the discretion of the Chief Steward, in consultation with the Judge, to combine showing classes. (Note: a minimum 3 entries per class is recommended.) Where less than 10 entries for suri or huacaya types are received by entry close date that section is to be cancelled as a competition, with breeders given the option to attend as a breed display.

Rule 36: Disqualification of an exhibit by Steward

The Chief Steward may disqualify an exhibit on the grounds of its handler being incorrectly attired.

Rule 37: No identification of prize-winning animals to be made prior to Supreme Champion Award

The names of studs and/or Exhibitors of prize-winning animals shall not be announced (orally or in writing, including social media) until after the Supreme Champion Award has been given.

Rule 38: Johne's Disease

No exhibit shall be exhibited unless from a herd or Stud/property for which either:

- a. proof of accreditation under Alpaca Johne's Disease Market Assurance Program (AJDMAP) is provided or origin from a State recognised as a Johne's Disease protected area or;
- b. for non-assessed alpacas not originating from a State recognised as a Johne's Disease protected area, a signed declaration verifying that the exhibits have not at any period of their lifetime been in a herd, or on a property, where at any time Johne's Disease was known, or suspected to exist. This declaration is to be submitted with the application for entry.

Rule 39: Misconduct by Exhibitor or Member

This rule applies to all stages of an AAA Ltd. endorsed show including, but not exclusively, the planning, preparation, co-ordination, set-up, actual day of the show and post show clean up.

A violation of any showing rule or misconduct by an Exhibitor, participant or member, other than on the day of the show shall be reported to the Show Convenor or Regional President in writing within one week of the incident occurring. Written complaints shall be immediately investigated

and if sufficient grounds for the complaint are confirmed the matter shall be reported to the AAA Ltd. National Secretary for appropriate action as provided for in the Exhibitor's Code of Conduct.

A violation of any showing rule on the day of the show by the Exhibitor shall be reported to the Chief Steward in writing by either the Judge, a Steward or Exhibitor within one hour of the alleged incident occurring.

Misconduct may also be reported by the Judge, a Steward or Exhibitor to the Chief Steward or Show Convenor in respect of actions of an Exhibitor or member present at the Show that is considered to be prejudicial to the industry. Such actions may include but be not limited to:

- a. demonstration of dissatisfaction with a Judge's decision, including refusal to accept an award or throwing an award on the ground;
- b. altercations with Show Officials, Exhibitors or the general public; or
- c. abusive or foul language or rude gestures in public and mistreatment of an animal.

Written complaints relevant to the day of the show shall be lodged with the Chief Steward or Show Convenor within one hour of the alleged incident occurring.

Written complaints received by the Chief Steward or Show Convenor shall be immediately investigated and if sufficient grounds for the complaint are confirmed the matter shall be reported to the AAA Ltd. National Secretary for appropriate action as provided for in the Exhibitors' Code of Conduct.

Exhibitors are bound by the Exhibitor's Code of Conduct (Appendix A).

Rule 40: Protests

Only an Exhibitor may lodge a protest against another Exhibitor or a Show official. The protest shall be lodged in writing together with a deposit of \$50, which shall be refunded if the protest is upheld.

The sole grounds for a protest shall be a breach of the Showing Rules.

Protests shall be lodged with the Chief Steward or Show Convenor within one hour of the end of the day's showing (when the last animal leaves the ring).

The Chief Steward or Show Convenor shall set up a Protest Committee prior to the commencement of the Show. The Committee shall comprise the Chief Steward as the Chair and two ordinary members not associated with the alleged incident. If an alleged incident occurred resulting in a protest in a class where the Chief Steward was exhibiting and his or her exhibit may have some bearing on the outcome of the protest then the Chief Steward would stand aside and be replaced by the Show Convenor or another suitable member. A meeting will be convened within 30 minutes of the protest being received. The Protest Committee shall immediately investigate the protest and if found to be valid, initiate appropriate action.

Complaints against Judges are to be put in writing, as outlined in the AAA Complaints Handling Procedure, including payment of the appropriate fee, which will be refunded if the complaint is upheld.

Rule 41: Fleece sampling

For the AAA Ltd. National Show and special fleece shows the fleece exhibits shall be sampled in accordance with the procedure included elsewhere in the Showing Manual and tested by an approved laboratory. (See Section 6)

EXHIBITORS

Rule 42: Registration of exhibits

At any Show, an alpaca or a fleece is ineligible to compete if:

- a. the animal is not registered on eAlpaca;
- b. the animal is registered on eAlpaca, but is not wearing the metal tag assigned to it in that register, unless official written Association confirmation is provided by the owner to the Chief Steward that the tag has been recently lost and that a new tag has been ordered and paid for;
- c. the animal or fleece is of suri type entered in a class for animals or fleeces of huacaya type;
- d. the animal or fleece is of huacaya type entered in a class for animals or fleeces of suri type.

Rule 43: Ownership of exhibits

The registered owner of an exhibit (including wethers and fleeces) must be a financial member of AAA Ltd.

A person or stud who, at the time of the Show, is not the person or stud in whose name the animal is registered on eAlpaca, is ineligible to exhibit that animal.

All fleeces being exhibited (including wether fleeces) must be the bona fide property of an AAA Ltd. financial member who must have ownership of the animal when the fleece was shorn.

Rule 44: Disqualified exhibit

An alpaca is disqualified from competition at a Show if:

- a. the person appointed as alpaca Judge for that Show is an immediate family/partner with the Exhibitor.
- b. It is, or has been during the past three months, either partially or fully owned by the Judge.
- c. The alpaca, during the three months prior to the date of the Show, has been:
 - i. boarded or agisted on a property under the said Judge's control;
 - ii. trained by the said Judge;
 - iii. has been purchased from and/or bred by the said Judge.

This includes entries for the Sire's and Dam's progeny.

Note: disqualification in (c) above does not extend to an alpaca that has been under the control of the Judge for mobile mating purposes.

Rule 45: Disqualified Exhibitor

A person who, during the three months prior to the Show, has received from or paid to the Judge of the Show any fees or other remuneration in respect of alpacas (other than stud fees) is disqualified from exhibiting such alpaca/s at that Show.

Rule 46: An Exhibitor must assist in inspection

An Exhibitor, or his/her nominated representative, who is unavailable to assist in the inspection of his/her alpaca/s at the designated inspection time may be disqualified.

Rule 47: Persons not to enter or exit a judging ring once a class begins

No person shall enter the judging ring after judging of a class begins, nor leave the ring until judging of that class has been completed and awards for that class have been made, except:

- a. with the consent of the Judge; or
- b. at the direction of the Judge or Chief Steward.

In the case of prize-winning Exhibitors and their animals, all shall remain in the judging ring until the completion of the Judge's comments.

Rule 48: Exhibit handlers

The handler of an exhibit in the judging ring shall remain with the exhibit until judging has been completed unless the Judge authorises a change of handler or removal of the exhibit from the judging ring due to the handler's inability to control it. It is recommended that small children not exhibit large animals they cannot control.

A handler with a disability may compete using a cane, crutch, wheelchair or electric wheelchair.

During inspection by the judge, the disabled handler or the judge may request the assistance of a second handler, at which time the disabled handler will move aside.

If the Chief Steward considers that the size or condition of the judging area, or any other relevant circumstance, presents a risk to the disabled handler, other handlers or stewards or any alpaca then the Chief Steward may require that the disabled handler does not enter the judging ring.

Rule 49: Exhibit Numbers

Exhibit numbers are not to be displayed on the animals. It is recommended that exhibit numbers be displayed in armbands (worn on the left arm) at all shows.

Rule 50: Handlers' attire

In the show ring the exhibitors' uniform will include the AAA logo on either the AAA black shirt, or a black vest. The vest may be either the AAA vest or a plain black vest worn over any top (short or long sleeves), and Stud names and advertising must be covered by the vest. The AAA black shirt or the black vest are to be worn with black pants or a long black skirt and black or brown enclosed shoes.

This attire may be varied by Show Convenors for special events.

Handlers may continue to wear either a plain white coat or one with the AAA logo over long trousers or long skirts with clean dress shoes or boots only until 31 December 2021.

A handler shall be deemed to be incorrectly attired if his/her dress or the animal being led displays any information capable of being construed as advertising for any stud.

Rule 51: Behaviour of Exhibitors, etc.

Every Exhibitor, animal handler and groom of alpacas at a Show shall behave respectfully toward Judges, Show Officials, other persons involved in alpaca classes and the general public during the Show.

If the Exhibitor does not respond to a direction given by either the Judge or the Chief Steward in accordance with the above rules, action shall be taken under the rule relating to Misconduct by Exhibitor or Member.

Rule 52: Removal of fleece

Exhibits shall not have fleece of a different colour to that of the blanket removed from an animal to a level below that of the blanket fleece.

Rule 53: Companion animals and dogs

Special permission to bring a companion alpaca must be obtained from the Convenor or Chief Steward prior to submission of the entry form, otherwise no companion alpacas will be permitted. No dogs are permitted into the precinct of where Show animals are being penned or shown in the ring. Guide Dogs are exempt.

Rule 54: Advertising

Promotional material is permitted within the bounds of the standard pen height for that show. For sale signs are not permitted, except where they are part of an endorsed campaign approved by the relevant Show Committee. Ribbons won at any other previous show are not permitted. Instructions on promotional materials on pens for shows must be included in the schedule for that show. Any changes to the display requirements must be consistent for all pens and advised to all exhibitors. Paid commercial exhibits are an exception to the above and are to be arranged in consultation with the relevant Show Committee.

Rule 55: Order of Judging

Show Convenors are encouraged, where numbers are sufficient, to alternate huacaya and suri classes

Rule 56: Fleece lengths for showing

Halter class entry must have a minimum fleece length of 50 millimetres for Huacaya and Suri and a maximum fleece age:

- For Huacaya of under 14 months
- For Suri in a first fleece of under 18 months, and
- For Suri in a second or subsequent fleece of under 14 months

Short Fleece shows

Shows held between January and the end of March, (excluding Royals, unless special dispensation is given in writing beforehand), have the option to elect which fleece length show they wish to run. Normal (lengths as above), or Short with a minimum fleece length of 30 millimetres for huacaya and a minimum length of 50 millimetres for suri.

Rule 57: Animals Permitted in the Show Ring

No animal will be permitted to enter the show ring unless it is being judged in a current class. This includes cria of a female being judged; the cria must be left either in the pen or supervised outside the ring.

Rule 58: Correct Animal Colour Classifications

An alpaca is to be shown in the appropriate colour class, when it is predominantly that colour. Any colour variations will be assessed at the time of inspection.

Fancy classes are to be added to the standard colour line-up rather than a separate entity.

Roan classes will be separated from grey classes at all shows.

As a guide:

White: constitutes a pristine, bright white fleece.

Light fawn: alpacas with a cream or off-white fleece or that have light fawn on the neck or backline. [NB: Animals with light fawn on the neck or backline should be entered and shown in the light fawn class].

Grey: a grey alpaca may be either rose grey or silver grey in light, medium and dark variants. A grey alpaca is visually “grey” from the exterior (or on opening the fleece). A grey alpaca may or may not have other white markings.

Roan: a roan is an alpaca that is brown, black, medium or dark fawn with a significant amount of easily visible white fibres consistently distributed throughout the entire fleece once the fleece is opened. From the exterior a roan may not appear to have white fibres at all, often appearing as the base colour when viewed from a distance. For halter classes a roan alpaca may or may not have other white markings. Dark alpacas that display white fibres due to age are to remain in their base colour class, as are dark alpacas with white fibres which are visible, yet not significant or consistently distributed throughout the entire fleece. Any such colour inconsistencies will be assessed at the Judge’s discretion.

Fancy: a fancy alpaca is to be shown in a fancy class if it has an unusual or striking distribution of two or more colours on the saddle, neck and/or legs on or above the knee. This includes pintos and tuxedo fronts where the primary colour is not grey and appaloosas including grey, as defined below.

A predominantly grey alpaca may be entered in a fancy class if it is registered with the APP prefix and displays six or more evenly sized spots throughout the blanket area.

Note: *The roan definition is to cover roan phenotypes for the show ring and does not attempt to define the roan genotype.*

Rule 59: Mature Females

To be eligible for entry into a Mature Class (48 months and over) a female alpaca must have produced a cria registered or recorded on eAlpaca.

SECTION TWO: SHOW FORMAT and CLASSES

Refer Section Three for definitions of specific classes.

SHOW FORMATS

AAA Ltd endorsed shows are run under one of the following formats:

Age Championship Shows

An Age Championship Show is the standard format for most AAA Shows where alpacas are judged in age sections. Within each age section are classes based on sex and colour as described in the show schedule. Championships and Reserve Championships are awarded for the various age sections. At larger shows the championships will be awarded for both males and females in each age group. The Champions of each age section subsequently compete for the overall Supreme Champion Award for either Suri or Huacaya.

Best Colour Class under Age Championship Show Format

If sufficient entries are received in each colour class, the organisers may hold a Best Colour Class for Huacaya and Suri sections – refer Section Three for Class definition.

Coloured Championship Shows

As an alternative to the standard age championship show format, a limited number of shows may be run on a colour championship basis (sometimes titled a “Colourbration” show). Each AAA region may, if they wish, run one Colour Championship Show per year (alpacas and fleece) plus a “stand alone” Colour Championship Fleece Show. The sections and class numbers for Colour Championship Shows are as shown elsewhere in these Rules.

Classes to be Offered

Within both show structures there are:

- **Mandatory Core Classes** – must be offered at all Association Shows
- **Optional Classes** – to be offered at the discretion of the Show Convenor
- **Trial Options** – to be offered, usually, at the discretion of the Show Convenor.

Where Trial Options are conducted, the Convenor is required to report the success or otherwise of the trial run at their show, including participation numbers and general feedback. Information is to be included on the Show Convenor's Report.

Optional Classes and Trial Options aim to give increased flexibility to convenors to choose, outside of the mandatory core classes, the classes most suited to their region's membership.

Trial Options are implemented to “test the support of all stakeholders” for proposed changes prior to making a rule change.

Convenors, when selecting additional optional classes, are encouraged to give serious consideration to the recommendations made under Rule 5 - “Management of Show timetable by Convenor” (*Section One*)

SHOW CLASSES

AGE CHAMPIONSHIP SHOW

SURI HALTER SECTION

The following apply to all Suri classes irrespective of the size of the show.

Splitting of classes

All classes over 20 animals are to be split evenly from youngest to oldest. (Example: 30 Junior White Females – remove class 201 and replace with 201A – 15 alpacas and 201B – 15 alpacas. Sorted from youngest in 201A to oldest in 201B).

No Suri is eligible to compete for Championships in Huacaya classes.

AGE CHAMPIONSHIP SHOW - MANDATORY SURI HALTER CLASSES

| | |
|--|--|
| Section HAOSJF: Junior 6 to under 12 months Female HAWSJF White HALSJF Fawn – Light HAFSJF Fawn – Medium/Dark HABSJF Brown HARSJF Roan HAGSJF Grey HAKSJF Black HAYSJF Fancy <i>Champion Junior Female</i> <i>Reserve Champion Junior Female</i> | Section HAOSJM: Junior 6 to under 12 months Male HAWSJM White HALSJM Fawn – Light HAFSJM Fawn – Medium/Dark HABSJM Brown HARSJM Roan HAGSJM Grey HAKSJM Black HAYSJM Fancy <i>Champion Junior Male</i> <i>Reserve Champion Junior Male</i> |
| Section HAOSIF: Intermediate 12 to under 18 months Female HAWSIF White HALSIF Fawn – Light HAFSIF Fawn – Medium/Dark HABSIF Brown HARSIF Roan HAGSIF Grey HAKSIF Black HAYSIF Fancy <i>Champion Intermediate Female</i> <i>Reserve Champion Intermediate Female</i> | Section HAOSIM: Intermediate 12 to under 18 months Male HAWSIM White HALSIM Fawn – Light HAFSIM Fawn – Medium/Dark HABSIM Brown HARSIM Roan HAGSIM Grey HAKSIM Black HAYSIM Fancy <i>Champion Intermediate Male</i> <i>Reserve Champion Intermediate Male</i> |

| | |
|---|---|
| Section HAOSAF: Adult 18 to under 30 months Female HAWSAF White HALSAF Fawn – Light HAFSAF Fawn – Medium/Dark HABSAF Brown HARSAF Roan HAGSAF Grey HAKSAF Black HAYSAF Fancy <i>Champion Adult Female</i> <i>Reserve Champion Adult Female</i> | Section HAOSAM: Adult 18 to under 30 months Male HAWSAM White HALSAM Fawn – Light HAFSAM Fawn – Medium/Dark HABSAM Brown HARSAM Roan HAGSAM Grey HAKSAM Black HAYSAM Fancy <i>Champion Adult Male</i> <i>Reserve Champion Adult Male</i> |
| Section HAOSF: Senior 30 months and over Female HAWSSF White HALSSF Fawn – Light HAFSSF Fawn – Medium/Dark HABSSF Brown HARSSF Roan HAGSSF Grey HAKSSF Black HAYSSF Fancy <i>Champion Senior Female</i> <i>Reserve Champion Senior Female</i> | Section HAOSM: Senior 30 months and over Male HAWSSM White HALSSM Fawn – Light HAFSSM Fawn – Medium/Dark HABSSM Brown HARSSM Roan HAGSSM Grey HAKSSM Black HAYSSM Fancy <i>Champion Senior Male</i> <i>Reserve Champion Senior Male</i> |
| Supreme Champion Suri | |
| Sire's and Dam's Progeny Classes - refer Section Three for Class Definition. | |
| HAPSOS: Sire's Progeny HAPSOS Three/Two progeny, by the one sire | HAPSOD: Dam's Progeny (Royals and Nationals) HAPSOD Two progeny, from the same dam |

AGE CHAMPIONSHIP SHOW - OPTIONAL SURI HALTER CLASSES

If Mature classes are to be included, Senior Classes are to be changed to 30 to under 48 months, followed by the Mature classes:

| | |
|--|--|
| Section HAOSMF: (Optional) Mature 48 months and over Female HAWSJF White HALSMF Fawn – Light HAFSMF Fawn – Medium/Dark HABSMF Brown HARSMF Roan HAGSMF Grey HAKSMF Black HAYSMF Fancy <i>Champion Mature Female</i> <i>Reserve Champion Mature Female</i> | Section HAOSMM: (Optional) Mature 48 months and over Male HAWSMM White HALSMM Fawn – Light HAFSMM Fawn – Medium/Dark HABSMM Brown HARSMM Roan HAGSMM Grey HAKSMM Black HAYSMM Fancy <i>Champion Mature Male</i> <i>Reserve Champion Mature Male</i> |
| Section HAOSOW: (Optional) Wether Classes HAOSJW 6 to under 18 months HAOSSW 18 months and over Best Wether - Not eligible for Supreme Champion Suri | |
| • Best of Colour Classes should be judged after the Supreme Champion. - refer Section Three for Class Definition. | |

AGE CHAMPIONSHIP SHOW - MANDATORY SURI FLEECE CLASSES

The following Core Fleece Classes must be offered at all Association Fleece Shows.

*Only one fleece that has been shorn in the 18 months prior to the show may be shown from any one animal. **For the 2021 Show Season, an exhibitor may show one fleece that has been shorn in 2019 or 2020, from any one animal.***

| Section FAOSOO: | |
|--|---|
| FAOSJO: Skirted Fleece 6 to under 12 months FAWSJO White ^{[L][SEP]} FALSJO Fawn – Light ^{[L][SEP]} FAFSJO Fawn - Medium/Dark FABSJO Brown ^{[L][SEP]} FARSJO Roan ^{[L][SEP]} FAGSJO Grey ^{[L][SEP]} FAKSJO Black ^{[L][SEP]} FAYSJO Fancy | FAOSIO: Skirted Fleece 12 to under 18 months FAWSIO White ^{[L][SEP]} FALSIO Fawn – Light ^{[L][SEP]} FAFSIO Fawn - Medium/Dark FABSIO Brown ^{[L][SEP]} FARSIO Roan ^{[L][SEP]} FAGSIO Grey ^{[L][SEP]} FAKSIO Black ^{[L][SEP]} FAYSIO Fancy |
| FAOSAO: Skirted Fleece 18 to under 30 months FAWSAO White ^{[L][SEP]} FALS AO Fawn – Light FAFS AO Fawn - Medium/Dark FABS AO Brown ^{[L][SEP]} FARS AO Roan ^{[L][SEP]} FAGS AO Grey ^{[L][SEP]} FAKS AO Black ^{[L][SEP]} FAYS AO Fancy | FAOSSO: Skirted Fleece 30 months and over FAWSSO White ^{[L][SEP]} FALSSO Fawn – Light ^{[L][SEP]} FAFSSO Fawn - Medium/Dark FABSSO Brown ^{[L][SEP]} FARSSO Roan ^{[L][SEP]} FAGSSO Grey ^{[L][SEP]} FAKSSO Black ^{[L][SEP]} FAYSSO Fancy |
| <i>Champion Suri Fleece</i> <i>Reserve Champion Suri Fleece</i> | |

AGE CHAMPIONSHIP SHOW - OPTIONAL SURI FLEECE CLASSES

Show Format Option

Optional Mature Age Suri Fleece Classes for National, Royal and Major Fleece Shows

| | |
|--|--|
| FAOSSO: Skirted Fleece 30 months to under 48 months ^{[L][SEP]} FAWSSO White ^{[L][SEP]} FALSSO Fawn – Light FAFSSO Fawn - Medium/Dark FABSSO Brown ^{[L][SEP]} FARSSO Roan ^{[L][SEP]} FAGSSO Grey FAKSSO Black F AYSSO Fancy | FAOSMO: Skirted Fleece 48 months to under 60 months ^{[L][SEP]} FAWSMO White ^{[L][SEP]} FALSMO Fawn – Light FAFSMO Fawn - Medium/Dark FABSMO Brown FARSMO Roan FAGSMO Grey FAKSMO Black FAYSMO Fancy |
| FAOSGO: Skirted Fleece 60 months and over FAWSGO White ^{[L][SEP]} FALSGO Fawn – Light FAFSGO Fawn - Medium/Dark FABSGO Brown ^{[L][SEP]} FARSGO Roan ^{[L][SEP]} FAGSGO Grey ^{[L][SEP]} FAKSGO Black ^{[L][SEP]} FAYSGO Fancy | |
| <p>At major fleece shows there is the option to award Champion and Reserve Champion in each age class, with an overall Supreme Champion.</p> <p><i>Champion Suri Fleece</i></p> <p><i>Reserve Champion Suri Fleece</i></p> <p><i>Supreme Champion Suri Fleece.</i></p> | |

Convenors have the option to combine Suri Fleece Classes as follows if numbers prevent offering the full range of fleece classes specified above (it is recommended there a minimum of 3 fleeces in each class):

White Fawn All Other Colours

| | |
|---|-----------------------------------|
| Sire's and Dam's Progeny Classes - refer Section Three for Class Definition. | |
| FAPSOS Sire's Progeny Fleece Class | FAPSOD Dam's Progeny Fleece Class |

Note: Progeny Fleece classes are for the National Show, Royals and other significant fleece shows with in excess of 100 fleece exhibits. Fleeces must be received at least three days prior to judging.

| | |
|---|--|
| Most Valuable Fleece (Suri) for Nationals (optional for Royals and special Fleece Shows) ^[SEP] Refer Section Four for Class Definition. ^[SEP] | |
| FAVSOO: Most Valuable Fleece (Suri) | |

Fleeces must be micron tested for this class.

AGE CHAMPIONSHIP SHOWS

HUACAYA HALTER SECTION

The following apply to all Huacaya classes irrespective of the size of the show.

No Huacaya is eligible to compete for Championships in Suri Classes.

Splitting of Classes

All classes over 20 animals are to be split evenly from youngest to oldest. (Example: 30 Junior White Females – remove class HAWHJF and replace with HAWHJFA – 15 alpacas and HAWHJFB – 15 alpacas.)

AGE CHAMPIONSHIP SHOW - MANDATORY HUACAYA HALTER CLASSES

| | |
|--|--|
| Section HAOHJF: Junior 6 to under 12 months Female HAWHJF White HALHJF Fawn – Light HAFHJF Fawn – Medium/Dark HABHJF Brown HARHJF Roan HAGHJF Grey HAKHJF Black HAYHJF Fancy <i>Champion Junior Female</i> <i>Reserve Champion Junior Female</i> | Section HAOHJM: Junior 6 to under 12 months Male HAWHJM White HALHJM Fawn – Light HAFHJM Fawn – Medium/Dark HABHJM Brown HARHJM Roan HAGHJM Grey HAKHJM Black HAYHJM Fancy <i>Champion Junior Male</i> <i>Reserve Champion Junior Male</i> |
| Section HAOHIF: Intermediate 12 to under 18 months Female HAWHIF White HALHIF Fawn – Light HAFHIF Fawn – Medium/Dark HABHIF Brown HARHIF Roan HAGHIF Grey HAKHIF Black HAYHIF Fancy <i>Champion Intermediate Female</i> <i>Reserve Champion Intermediate Female</i> | Section HAOHIM: Intermediate 12 to under 18 months Male HAWHIM White HALHIM Fawn – Light HAFHIM Fawn – Medium/Dark HABHIM Brown HARHIM Roan HAGHIM Grey HAKHIM Black HAYHIM Fancy <i>Champion Intermediate Male</i> <i>Reserve Champion Intermediate Male</i> |

| | |
|---|---|
| Section HAOHAF: Adult 18 to under 30 months Female HAWHAF White HALHAF Fawn – Light HAFHAF Fawn – Medium/Dark HABHAF Brown HARHAF Roan HAGHAF Grey HAKHAF Black HAYHAF Fancy <i>Champion Adult Female</i> <i>Reserve Champion Adult Female</i> | Section HAOHAM: Adult 18 to under 30 months Male HAWHAM White HALHAM Fawn – Light HAFHAM Fawn – Medium/Dark HABHAM Brown HARHAM Roan HAGHAM Grey HAKHAM Black HAYHAM Fancy <i>Champion Adult Male</i> <i>Reserve Champion Adult Male</i> |
| Section HAOHSF: Senior 30 months and over Female HAWHSF White HALHSF Fawn – Light HAFHSF Fawn – Medium/Dark HABHSF Brown HARHSF Roan HAGHSF Grey HAKHSF Black HAYHSF Fancy <i>Champion Senior Female</i> <i>Reserve Champion Senior Female</i> | Section HAOHSM: Senior 30 months and over Male HAWHSM White HALHSM Fawn – Light HAFHSM Fawn – Medium/Dark HABHSM Brown HARHSM Roan HAGHSM Grey HAKHSM Black HAYHSM Fancy <i>Champion Senior Male</i> <i>Reserve Champion Senior Male</i> |
| Supreme Champion Huacaya | |
| Sire's and Dam's Progeny Classes - refer Section Three for Class Definition. | |
| Section HAPHOS: Sire's Progeny HAPHOS Three/Two progeny, by the one sire | Section HAPHOD: Dam's Progeny HAPHOD Two progeny, from the same dam |

AGE CHAMPIONSHIP SHOW - OPTIONAL HUACAYA HALTER CLASSES

If Mature classes are to be included, Senior Classes are to be changed to 30 to under 48 months, followed by the Mature classes:

| | |
|---|--|
| Section HAOHMF: Mature 48 months and over Female HAWHMF White HALHMF Fawn – Light HAFHMF Fawn – Medium/Dark HABHMF Brown HARHMF Roan HAGHMF Grey HAKHMF Black HAYHMF Fancy <i>Champion Mature Female</i> <i>Reserve Champion Mature Female</i> | Section HAOHMM: Mature 48 months and over Male HAWHMM White HALHMM Fawn – Light HAFHMM Fawn – Medium/Dark HABHMM Brown HARHMM Roan HAGHMM Grey HAKHMM Black HAYHJMM Fancy <i>Champion Mature Male</i> <i>Reserve Champion Mature Male</i> |
| Best of Colour Classes should be judged after the Supreme Champion. - <i>refer Section Three for Class Definition.</i> | |
| Section HAOHOW: Wether Classes HAOHJW 6 to under 18 months HAOHSW 18 months and over Best Wether Not eligible for Supreme Champion Huacaya | |

AGE CHAMPIONSHIP SHOW - HUACAYA FLEECE SECTION

MANDATORY HUACAYA FLEECE CLASSES

The following Core Fleece Classes must be offered at all Association Fleece Shows.

*Only one fleece that has been shorn in the 18 months prior to the show may be shown from any one animal. **For the 2021 Show Season, an exhibitor may show one fleece that has been shorn in 2019 or 2020, from any one animal.***

| | |
|---|---|
| Section FAOHOO: | |
| FAOHJO: Skirted Fleece 6 to under 12 months FAWHJO White FALHJO Fawn – Light FAFHJO Fawn - Medium/Dark FABHJO Brown FARHJO Roan FAGHJO Grey FAKHJO Black FAYHJO Fancy | FAOHIO: Skirted Fleece 12 to under 18 months FAWHIO White FALHIO Fawn – Light FAFHIO Fawn - Medium/Dark FABHIO Brown FARHIO Roan FAGHIO Grey FAKHIO Black FAYHIO Fancy |
| FAWHAO: Skirted Fleece 18 to under 30 months FAWHAO White FALHAO Fawn – Light FAFHAO Fawn - Medium/Dark FABHAO Brown FARHAO Roan FAGHAO Grey FAKHAO Black FAYHAO Fancy | FFAOHSO: Skirted Fleece 30 months and over FAWHSO White FALHSO Fawn – Light FAFHSAO Fawn - Medium/Dark FABHSO Brown FARHSO Roan FAGHSO Grey FAKHSO Black FAYHSO Fancy |
| <i>Champion Huacaya Fleece</i> <i>Reserve Champion Huacaya Fleece</i> | |

Age Championship Show - OPTIONAL Huacaya Fleece Classes

Additional Mature Age Huacaya Fleece Classes for National, Royal and Major Fleece Shows are

| | |
|--|--|
| FAOHSO: Skirted Fleece 30 months to under 48 months FAWHSO White FALHSO Fawn – Light FAFHSO Fawn - Medium/Dark FABHSO Brown FARHSO Roan FAGHSO Grey FAKHSO Black FAYHSO Fancy | FAOHMO: Skirted Fleece 48 months to under 60 months FAWHMO White FALHMO Fawn – Light FAFHMO Fawn - Medium/Dark FABHMO Brown FARHMO Roan FAGHMO Grey FAKHMO Black FAYHMO Fancy |
| FAOHGO: Skirted Fleece 60 months and over FAWHGO White FALHGO Fawn – Light FAFHGO Fawn - Medium/Dark FABHGO Brown FARHGO Roan FAGHGO Grey FAKHGO Black FAYHGO Fancy | |

At major fleece shows a Champion and reserve Champion Huacaya Fleece can be awarded in each section with an overall Supreme Champion

Convenors have the option to combine Huacaya Fleece Classes as follows if numbers prevent offering the full range of fleece classes specified above (it is recommended there a minimum of 3 fleeces in each class):

- White
- Fawn
- All Other Colours

Sire's and Dam's Progeny Classes - refer Section Three for Class Definition.

FAPHOS: Sire's Progeny Fleece Class

FAPHOD: Dam's Progeny Fleece Class

Note: Progeny Fleece classes are for the National Show, Royals and other significant fleece shows with in excess of 100 fleece exhibits. Fleeces must be received at least three days prior to judging.

Most Valuable Fleece (Huacaya) for Nationals (optional for Royals and special Fleece Shows) - Refer Section Four for Class Definition.

FAVHOO: Most Valuable Fleece (Huacaya)

Fleeces must be micron tested for this class.

COLOUR CHAMPIONSHIP SHOW

SURI HALTER SECTIONS

COLOUR CHAMPIONSHIP SHOW - MANDATORY SURI HALTER CLASSES

The following classes shall be offered, regardless of the size of show

| | |
|---|---|
| Section HCWSOO: White HCWSJF Junior 6 to under 12 months Female HCWSIF Intermediate 12 to under 18 months Female HCWSAF Adult 18 to under 30 months Female HCWSSF Senior 30 to under 48 months Female HCWSMF Mature 48 months and over Female <i>Champion White Suri Female</i> HCWSJM Junior 6 to under 12 months Male HCWSIM Intermediate 12 to under 18 months Male HCWSAM Adult 18 to under 30 months Male HCWSSM Senior 30 to under 48 months Male HCWSMM Mature 48 months and over Male <i>Champion White Suri Male</i> | Section HCLSOO: Light Fawn HCLSJF Junior 6 to under 12 months Female HCLSIF Intermediate 12 to under 18 months Female HCLSAF Adult 18 to under 30 months Female HCLSSF Senior 30 to under 48 months Female HCLSMF Mature 48 months and over Female <i>Champion Light Fawn Suri Female</i> HCLSIM Junior 6 to under 12 months Male HCLSIM Intermediate 12 to under 18 months Male HCLSAM Adult 18 to under 30 months Male HCLSSM Senior 30 to under 48 months Male HCLSMM Mature 48 months and over Male <i>Champion Light Fawn Suri Male</i> |
| Supreme White Suri | Supreme Light Fawn Suri |
| Section HCFSOO: Medium/Dark Fawn HCFSJF Junior 6 to under 12 months Female HCFSIF Intermediate 12 to under 18 months Female HCFSAF Adult 18 to under 30 months Female HCFSSF Senior 30 to under 48 months Female HCFSMF Mature 48 months and over Female <i>Champion Med/Dark Fawn Suri Female</i> HCFSJM Junior 6 to under 12 months Male HCFSIM Intermediate 12 to under 18 months Male HCFSAM Adult 18 to under 30 months Male HCFSSM Senior 30 to under 48 months Male HCFSMM Mature 48 months and over Male <i>Champion Med/Dark Fawn Suri Male</i> | Section HCBSOO: Brown HCBSJF Junior 6 to under 12 months Female HCBSIF Intermediate 12 to under 18 months Female HCBSAF Adult 18 to under 30 months Female HCBSSF Senior 30 to under 48 months Female HCBSMF Mature 48 months and over <i>Female Champion Brown Suri Female</i> HCBSJM Junior 6 to under 12 months Male HCBSIM Intermediate 12 to under 18 months Male HCBSAM Adult 18 to under 30 months Male HCBSSM Senior 30 to under 48 months Male HCBSMM Mature 48 months and over Male <i>Champion Brown Suri Male</i> |
| Supreme Medium/Dark Fawn Suri | Supreme Brown Suri |
| Section HCRSOO: Roan | Section HCGSOO: Grey |

| | |
|--|--|
| HCRSJF Junior 6 to under 12 months Female HCRSIF Intermediate 12 to under 18 months Female HCRSAF Adult 18 to under 30 months Female HCRSSF Senior 30 to under 48 months Female HCRSMF Mature 48 months and over Female <i>Champion Roan Suri Female</i> HCRSJM Junior 6 to under 12 months Male HCRSIM Intermediate 12 to under 18 months Male HCRSAM Adult 18 to under 30 months Male HCRSSM Senior 30 to under 48 months Male HCRSMM Mature 48 months and over Male <i>Champion Roan Suri Male</i> | HCGSJF Junior 6 to under 12 months Female HCGSIF Intermediate 12 to under 18 months Female HCGSAF Adult 18 to under 30 months Female HCGSSF Senior 30 to under 48 months Female HCGSMF Mature 48 months and over Female <i>Champion Grey Suri Female</i> HCGSJM Junior 6 to under 12 months Male HCGSIM Intermediate 12 to under 18 months Male HCGSAM Adult 18 to under 30 months Male HCGSSM Senior 30 to under 48 months Male HCGSMM Mature 48 months <i>Champion Grey Suri Male</i> |
| <i>Supreme Roan Suri</i> | <i>Supreme Grey Suri</i> |
| Section HCKSOO: Black HCKSJF Junior 6 to under 12 months Female HCKSIF Intermediate 12 to under 18 months Female HCKSAF Adult 18 to under 30 months Female HCKSSF Senior 30 to under 48 months Female HCKSMF Mature 48 months and over Female <i>Champion Black Suri Female</i> HCKSJM Junior 6 to under 12 months Male HCKSIM Intermediate 12 to under 18 months Male HCKSAM Adult 18 to under 30 months Male HCKSSM Senior 30 to under 48 months Male HCKSMM Mature 48 months and over Male <i>Champion Black Suri Male</i> | Section HCYSOO: Fancy HCYSJF Junior 6 to under 12 months Female HCYSIF Intermediate 12 to under 18 months Female HCYSAF Adult 18 to under 30 months Female HCYSSF Senior 30 to under 48 months Female HCYSMF Mature 48 months and over Female <i>Champion Fancy Suri Female</i> HCYSJM Junior 6 to under 12 months Male HCYSIM Intermediate 12 to under 18 months Male HCYSAM Adult 18 to under 30 months Male HCYSSM Senior 30 to under 48 months Male HCYSMM Mature 48 months and over Male <i>Champion Fancy Suri Male</i> |
| <i>Supreme Black Suri</i> | <i>Supreme Fancy Suri</i> |

COLOUR CHAMPIONSHIP SHOW - OPTIONAL SURI HALTER CLASSES

Note Option to run: Reserve Champion Female and Male Classes within each Colour

| | |
|---|---|
| Sire's Progeny Classes within each Colour: HCWSOS Sire's Progeny – White HCLSOS Sire's Progeny – Light Fawn HCFSOS Sire's Progeny – Med/Dark Fawn HCBSOS Sire's Progeny – Brown HCRSOS Sire's Progeny – Roan HCGSOS Sire's Progeny – Grey HCSSOS Sire's Progeny – Black HCYSOS Sire's Progeny - Fancy | Section HCOHOW: Wether HCWSHOW White wether – all ages HCLSOW Light Fawn wether – all ages HCFSOW Med/Dark Fawn wether – all ages HCBSOW Brown wether – all ages HCRSOW Roan wether – all ages HCGSOW Grey wether – all ages HCKSOW Black wether – all ages HHYSOW Fancy wether - all ages Best Suri Wether |
| <i>Best in Show Award</i> | |

Convenors have the option to run a Best in Show Award. At the conclusion of regular judging, all supreme alpacas from the various colours will be invited back into the ring and a “Best in Show” will be selected, by the judges, from the eligible coloured Supremes.

COLOUR CHAMPIONSHIP SHOW - MANDATORY SURI FLEECE CLASSES

The following Core Fleece Classes must be offered at all Association Fleece Shows.

*Only one fleece that has been shorn in the 18 months prior to the show may be shown from any one animal. **For the 2021 Show Season, an exhibitor may show one fleece that has been shorn in 2019 or 2020, from any one animal.***

| | |
|--|--|
| Section FCWSOO: White FCWSJO Skirted Fleece 6 to under 12 months FCWSIO Skirted Fleece 12 to under 18 months FCWSAO Skirted Fleece 18 to under 30 months FCWSSO Skirted Fleece 30 months and over <i>Supreme White Suri Fleece</i> | Section FCLSOO: Light Fawn FCLSJO Skirted Fleece 6 to under 12 months FCLSIO Skirted Fleece 12 to under 18 months FCLSAO Skirted Fleece 18 to under 30 months FCLSSO Skirted Fleece 30 months and over <i>Supreme Light Fawn Suri Fleece</i> |
| Section FCFSOO: Medium/Dark Fawn FCFSJO Skirted Fleece 6 to under 12 months FCFSIO Skirted Fleece 12 to under 18 months FCFSAO Skirted Fleece 18 to under 30 months FCFSSO Skirted Fleece 30 months and over <i>Supreme Medium/Dark Fawn Suri Fleece</i> | Section FCBSOO: Brown FCBSJO Skirted Fleece 6 to under 12 months FCBSIO Skirted Fleece 12 to under 18 months FCBSAO Skirted Fleece 18 to under 30 months FCBSSO Skirted Fleece 30 months and over <i>Supreme Brown Suri Fleece</i> |
| Section FCRSOO: Roan FCRSJO Skirted Fleece 6 to under 12 months FCRSIO Skirted Fleece 12 to under 18 months FCRSAO Skirted Fleece 18 to under 30 months FCRSSO Skirted Fleece 30 months and over <i>Supreme Roan Suri Fleece</i> | Section FCGSOO: Grey FCGSJO Skirted Fleece 6 to under 12 months FCGSIO Skirted Fleece 12 to under 18 months FCGSAO Skirted Fleece 18 to under 30 months FCGSSO Skirted Fleece 30 months and over <i>Supreme Grey Suri Fleece</i> |
| Section FCKSOO: Black FCKSJO Skirted Fleece 6 to under 12 months FCKSIO Skirted Fleece 12 to under 18 months FCKSAO Skirted Fleece 18 to under 30 months FCKSSO Skirted Fleece 30 months and over <i>Supreme Black Suri Fleece</i> | Section FCYSOO: Fancy FCYSJO Skirted Fleece 6 to under 12 months FCKSIO Skirted Fleece 12 to under 18 months FCYSAO Skirted Fleece 18 to under 30 months SCYSSO Skirted Fleece 30 months and over <i>Supreme Fancy Suri Fleece</i> |

COLOUR CHAMPIONSHIP SHOW - OPTIONAL SURI FLEECE CLASSES

BEST IN SHOW FLEECE

COLOUR CHAMPIONSHIP SHOW HUACAYA HALTER SECTION

COLOUR CHAMPIONSHIP SHOW - MANDATORY HUACAYA HALTER CLASSES

The following classes shall be offered, regardless of the size of show:

| | |
|---|---|
| Section HCWHOO: White HCWHJF Junior 6 to under 12 months Female HCWHIF Intermediate 12 to under 18 months Female HCWHAF Adult 18 to under 30 months Female HCWHSF Senior 30 to under 48 months Female HCWHMF Mature 48 months and over Female <i>Champion White Female</i> HCWHJM Junior 6 to under 12 months Male HCWHIM Intermediate 12 to under 18 months Male HCWHAM Adult 18 to under 30 months Male HCWHSM Senior 30 to under 48 months Male HCWHMM Mature 48 months and over Male <i>Champion White Male</i> | Section HCLHOO: Light Fawn HCLHJF Junior 6 to under 12 months Female HCLHIF Intermediate 12 to under 18 months Female HCLHAF Adult 18 to under 30 months Female HCLHSF Senior 30 to under 48 months Female HCLHMF Mature 48 months and over Female <i>Champion Light Fawn Female</i> HCLHJM Junior 6 to under 12 months Male HCLHIM Intermediate 12 to under 18 months Male HCLHAM Adult 18 to under 30 months Male HCLHSM Senior 30 to under 48 months Male HCLHMM Mature 48 months and over Male <i>Champion Light Fawn Male</i> |
| Supreme White Huacaya | Supreme Light Fawn Huacaya |
| Section HCFHOO: Medium/Dark Fawn HCFHJF Junior 6 to under 12 months Female HCFHIF Intermediate 12 to under 18 months Female HCFHAF Adult 18 to under 30 months Female HCFHSF Senior 30 to under 48 months Female HCFHMF Mature 48 months and over Female <i>Champion Medium/Dark Fawn Female</i> HCFHJM Junior 6 to under 12 months Male HCFHIM Intermediate 12 to under 18 months Male HCFHAM Adult 18 to under 30 months Male HCFHSM Senior 30 to under 48 months Male HCFHMM Mature 48 months and over Male <i>Champion Medium/Dark Fawn Male</i> | Section HCBHOO: Brown HCBHJF Junior 6 to under 12 months Female HCBHIF Intermediate 12 to under 18 months Female HCBHAF Adult 18 to under 30 months Female HCBHSF Senior 30 to under 48 months Female HCBHMF Mature 48 months and over Female <i>Champion Brown Female</i> HCBHJM Junior 6 to under 12 months Male HCBHIM Intermediate 12 to under 18 months Male HCBHAM Adult 18 to under 30 months Male HCBHSM Senior 30 to under 48 months Male HCBHMM Mature 48 months and over Male <i>Champion Brown Male</i> |
| Supreme Medium/Dark Fawn Huacaya | Supreme Brown Huacaya |
| Section HCRHOO: Roan | Section HCGHOO: Grey |

| | |
|--|--|
| <p>HCRHJF Junior 6 to under 12 months Female</p> <p>HCRHIF Intermediate 12 to under 18 months Female</p> <p>HCRHAF Adult 18 to under 30 months Female</p> <p>HCRHSF Senior 30 to under 48 months Female</p> <p>HCRHMF Mature 48 months and over Female</p> <p><i>Champion Roan Female</i></p> <p>HCRHJM Junior 6 to under 12 months Male</p> <p>HCRHIM Intermediate 12 to under 18 months Male</p> <p>HCRHAM Adult 18 to under 30 months Male</p> <p>HCRHSM Senior 30 to under 48 months Male</p> <p>HCRHMM Mature 48 months and over Male</p> <p><i>Champion Roan Male</i></p> | <p>HCGHJF Junior 6 to under 12 months Female</p> <p>HCGHIF Intermediate 12 to under 18 months Female</p> <p>HCGHAF Adult 18 to under 30 months Female</p> <p>HCGHSF Senior 30 to under 48 months Female</p> <p>HCGHMF Mature 48 months and over Female</p> <p><i>Champion Grey Female</i></p> <p>HCGHJM Junior 6 to under 12 months Male</p> <p>HCGHIM Intermediate 12 to under 18 months Male</p> <p>HCGHAM Adult 18 to under 30 months Male</p> <p>HCGHAM Senior 30 to under 48 months Male</p> <p>HCGHMM Mature 48 months and over Male</p> <p><i>Champion Grey Male</i></p> |
| <i>Supreme Roan Huacaya</i> | <i>Supreme Grey Huacaya</i> |
| <p>Section HCKHOO: Black</p> <p>HCKHJF Junior 6 to under 12 months Female</p> <p>HCKHIF Intermediate 12 to under 18 months Female</p> <p>HCKHAF Adult 18 to under 30 months Female</p> <p>HCKHSF Senior 30 to under 48 months Female</p> <p>HCKHMF Mature 48 months and over Female</p> <p><i>Champion Black Female</i></p> <p>HCKHJM Junior 6 to under 12 months Male</p> <p>HCKHIM Intermediate 12 to under 18 months Male</p> <p>HCKHAM Adult 18 to under 30 months Male</p> <p>HCKHSM Senior 30 to under 48 months Male</p> <p>HCKHMM Mature 48 months and over Male</p> <p><i>Champion Black Male</i></p> | <p>Section HCYHOO: Fancy</p> <p>HCYHJF Junior 6 to under 12 months Female</p> <p>HCYHIF Intermediate 12 to under 18 months Female</p> <p>HCYHAF Adult 18 to under 30 months Female</p> <p>HCYHSF Senior 30 to under 48 months Female</p> <p>HCYHMF Mature 48 month and over Female</p> <p><i>Champion Fancy Female</i></p> <p>HCYHJM Junior 6 to under 12 months Male</p> <p>HCYHIM Intermediate 12 to under 18 months Male</p> <p>HCYHAM Adult 18 to under 30 months Male</p> <p>HCYHSM Senior 30 to under 48 months Male</p> <p>HCYHMM Mature 48 month and over Male</p> <p><i>Champion Fancy Male</i></p> |
| <i>Supreme Black Huacaya</i> | <i>Supreme Fancy Huacaya</i> |

COLOUR CHAMPIONSHIP SHOW - OPTIONAL HUACAYA HALTER CLASSES

Mature Classes may be deleted with Senior classes changed to '30 months and over'

Note Option to run: Reserve Champion Female and Male Classes within each Colour

| | |
|---|---|
| Sire's Progeny Classes within each Colour: HCWHOS Sire's Progeny – White HCLHOS Sire's Progeny – Light Fawn HCFHOS Sire's Progeny – Med/Dark Fawn HCBHOS Sire's Progeny – Brown HCRHOS Sire's Progeny – Roan HCGHOS Sire's Progeny – Grey HCKHOS Sire's Progeny – Black HCYHOS Sire's Progeny – Fancy | Section HCOHOW: Wether HCWHOW White wether – all ages HCLHOW Light Fawn wether – all ages HCFHOW Med/Dark Fawn wether – all ages HCBHOW Brown wether – all ages HCRHOW Roan wether – all ages HCGHOW Grey wether – all ages HCKHOW Black wether – all ages HHYHOW Fancy wether - all ages Best Wether |
| <i>Best in Show Award</i> | |

Convenors have the option to run a Best in Show Award. At the conclusion of regular judging, all Supreme alpacas from the various colours will be invited back into the ring and a "Best in Show" will be selected, by the judges, from the eligible coloured Supremes.

COLOUR CHAMPIONSHIP SHOW - MANDATORY HUACAYA FLEECE CLASSES

The following Core Fleece Classes must be offered at all Association Fleece Shows.

*Only one fleece that has been shorn in the 18 months prior to the show may be shown from any one animal. **For the 2021 Show Season, an exhibitor may show one fleece that has been shorn in 2019 or 2020, from any one animal.***

| | |
|--|---|
| Section FCWHOO: White FCWHJO Skirted Fleece 6 to under 12 months FCWHIO Skirted Fleece 12 to under 18 months FCWHAO Skirted Fleece 18 to under 30 months FCWHSO Skirted Fleece 30 months and over. <i>Supreme White Huacaya Fleece</i> | Section FCLHOO: Light Fawn FCLHJO Skirted Fleece 6 to under 12 months FCLHIO Skirted Fleece 12 to under 18 months FCLHAO Skirted Fleece 18 to under 30 months FCLHSO Skirted Fleece 30 months and over <i>Supreme Light Fawn Huacaya Fleece</i> |
| Section FCFHOO: Medium/Dark Fawn FCFHJO Skirted Fleece 6 to under 12 months FCFHIO Skirted Fleece 12 to under 18 months FCFHAO Skirted Fleece 18 to under 30 months FCFHSO Skirted Fleece 30 months and over. <i>Supreme Medium/Dark Fawn Huacaya Fleece</i> | Section FCBHOO: Brown FCBHJO Skirted Fleece 6 to under 12 months FCBHIO Skirted Fleece 12 to under 18 months FCBHAO Skirted Fleece 18 to under 30 months FCBHSO Skirted Fleece 30 months and over. <i>Supreme Brown Huacaya Fleece</i> |
| Section FCRHOO: Roan FCRHJO Skirted Fleece 6 to under 12 months FCRHIO Skirted Fleece 12 to under 18 months FCRHAO Skirted Fleece 18 to under 30 months FCRHSO Skirted Fleece 30 months and over. <i>Supreme Roan Huacaya Fleece</i> | Section FCGHOO: Grey FCGHJO Skirted Fleece 6 to under 12 months FCGHIO Skirted Fleece 12 to under 18 months FCGHAO Skirted Fleece 18 to under 30 months FCGHSO Skirted Fleece 30 months and over. <i>Supreme Grey Huacaya Fleece</i> |
| Section FCKHOO: Black FCKHJO Skirted Fleece 6 to under 12 months FCKHIO Skirted Fleece 12 to under 18 months FCKHAO Skirted Fleece 18 to under 30 months FCKHSO Skirted Fleece 30 months and over. <i>Supreme Black Huacaya Fleece</i> | Section FCYHOO: Fancy FCYHJO Skirted Fleece 6 to under 12 months FCYHIO Skirted Fleece 12 to under 18 months FCYHAO Skirted Fleece 18 to under 30 months FCYHSO Skirted Fleece 30 months and over. <i>Supreme Fancy Huacaya Fleece</i> |

COLOUR CHAMPIONSHIP SHOW - OPTIONAL HUACAYA FLEECE CLASSES

BEST IN SHOW FLEECE

Convenors have the option to run a Best in Show Award.

JUNIOR HANDLER COMPETITION

Junior Handler – refer Section Three for definition

JAOAOO: Junior Handler

JAOAJO 6 to under 11 Years

JAOAIO 11 to under 15 Years

JAJAJO: Junior Judging

JAJAJO 15 to under 25 Years (OPTIONAL) (refer to Showing Rules Manual)

SECTION THREE: CLASS DEFINITIONS

Refer Section Four for Class Judging Criteria.

Age Championship Shows

Best of Colour Classes under Age Championship Show Format

If sufficient entries are received in each colour class, the organisers may hold a Best Huacaya and Best Suri Colour Award e.g., Best White Huacaya, Best White Suri, Best Light Fawn Huacaya, Best Light Fawn Suri, Best Brown etc., drawn from the winners of respective age groups/colour classes, both male and female that have not been joined to other classes at that Show. This will be an optional addition to the standard age group Championship events.

When running Best of Colour Awards at an Age Championship Show, Convenors have the option, subject to time permitting and numbers warranting, to have a “Best Colour Female” and a “Best Colour Male” award, with the winning female and male competing for the “Best Colour in Show”.

Sire’s Progeny Class

For major shows (Nationals and Royals), the class is for three progeny by one sire. For smaller shows (regional or country agricultural shows), the class may be for two progeny by one sire.

There shall be at least two entries in the Sire’s Progeny Class. The progeny may be a group of three or two males and/or females – but must not be wethers. The progeny need not be owned or bred by the one exhibitor. However, they must be drawn from the ordinary classes ie. all progeny must have been entered as animal exhibits in the same show as that in which they are to be exhibited as Sires’ Progeny. The progeny cannot be presently, or during the prior three months, either partially or fully owned by the Judge.

Only one progeny from any one dam may be shown in each Sire’s Progeny Group. There must be a minimum of 11 months of age difference in ET Progeny. Refer to Rule 44 for further information. In addition to displaying the Progeny Group entrant number, all members of the Progeny Group are to display their initial exhibitor number from their halter class in the same show, including the number of the exhibit, age of exhibit and months of fleece growth.

Dam’s Progeny Class

For major shows (Nationals and Royals), the class is for two progeny from the same dam.

There shall be at least two entries in the Dam’s Progeny Class. A Dam’s Progeny entry may be a pair of females, males, or female and male (not wethers). There must be a minimum of 11 months age difference between alpacas presented for this class. Refer to Rule 44 for further information. The progeny need not be owned or bred by the one exhibitor but must be the progeny of the same dam. The progeny cannot be presently, or during the prior three months, either partially or fully owned by the Judge. Alpacas entered for the Dam’s Progeny class must have been entered as animal exhibits in the same show as that in which they are to be exhibited as Dam’s Progeny.

Only one progeny from any one sire may be shown in each Dam’s Progeny Group.

In addition to displaying the Progeny Group entrant number, all members of the Progeny Group are to display their initial exhibitor number from their halter class in the same show, including the number of the exhibit, age of exhibit and months of fleece growth.

Entry and Entry Fees for Progeny Group

Only one entry fee per group is required. The exhibit may be entered on the day of the Show before 12 noon or a time nominated by the Chief Steward.

Most Valuable Fleece Class (separate Suri and Huacaya Classes)

This class is for Nationals (optional for Royals and Special Fleece Shows). Fleeces must be micron tested for this class.

Any fleece may be entered in this class. A fleece may be entered in its standard age group/colour class AND the Most Valuable Fleece Class, provided that it is clearly marked with two separate entries on the entry form and two separate entry fees are paid. If desired, a fleece may only be submitted for entry to the Most Valuable Fleece Class, or alternatively, it may only be submitted for entry to its usual age group/colour class.

Prices used to calculate the Most Valuable Fleece are based on current prices being paid for fleece at the time of the Show. Convenors/Judges are to refer to the Chair, Showing and Judging Committee if this information is not readily available.

Sire's and Dam's Progeny Fleece Classes

Introduced for the National Show only but may also be offered at Royal Shows and other significant Fleece shows, providing the following criteria are met:

- i History of/or expectation for Fleece Show entries in excess of 100 fleeces.
- ii Entries closed and fleeces received at least three days ahead of judging day, to enable necessary entry checking and correct processing of entries by officials.

Sire's Progeny Fleece Class

The Sire's Progeny Fleece Class is comprised of two fleece exhibits from alpacas that are the progeny of the same sire. Both fleeces from this sire are evaluated simultaneously and should represent their sire's ability to transmit positive traits to each of his progeny in a uniform and consistent manner. There must be a minimum of 11 months of age difference in ET Progeny. Refer to Rule 44 for further information.

Fleeces entered in the Sire's Progeny Class must be eligible (i.e. from an alpaca registered on eAlpaca) and entered in the Fleece Show in their respective fleece classes. The Show Convenor will confirm the qualification of the entries.

Both genders can be represented but must be from two different dams.

The colour and age of each alpaca within the group will not be a discriminating factor.

Show entry is made in the name of the sire on the show entry form and the two fleeces being included for this class must also be nominated on the entry form.

The sire's fleece is not shown with this group entry (but may be shown individually within the Fleece Show).

Dam's Progeny Fleece Class

The Dam's Progeny Fleece Class is comprised of two fleece exhibits from alpacas that are the progeny of the same dam. Both fleeces from this dam are evaluated simultaneously and should represent their dam's ability to transmit positive traits to each of her progeny in a uniform and consistent manner. Fleeces entered in Dam's progeny class must be eligible (i.e. from an alpaca registered on eAlpaca) and entered in the Fleece Show in their respective fleece classes. The Show Convenor will confirm the qualification of the entries.

There must be a minimum of 11 months age difference between fleeces presented for this class. Refer to Rule 44 for further information.

Both genders can be represented but must be from two different sires.

The colour and age of each alpaca within the group shall not be a discriminating factor.

Show entry is made in the name of the dam on the show entry form and the two fleeces being included in this class must also be nominated on the entry form.

The dam's fleece is not shown with this group entry (but may be shown individually within the Fleece Show).

Coloured Championship Shows

Sire's Progeny Class

Sire's Progeny classes will be held at the conclusion of each respective coloured halter show. There shall be at least two entries in the Sire's Progeny Class. The colour of the progeny determines which coloured show the progeny are entered. A sire that has progeny of more than one colour may be represented in more than one colour show.

The progeny may be a group of two males and/or females – but must not be wethers. The progeny need not be owned or bred by the one exhibitor. However, they must be drawn from the ordinary classes i.e. all progeny must have been entered as animal exhibits in the same show as that in which they are to be exhibited as Sires' Progeny.

Only one progeny from any one dam may be shown in each Sire's Progeny Group.

In addition to displaying the Progeny Group entrant number, all members of the Progeny Group are to display their initial exhibitor number from their halter class in the same show, including the number of the exhibit, age of exhibit and months of fleece growth.

Young Judge Competitions

It is recommended that Regions encourage and develop an interest and involvement in alpacas by young people between 15 and under 25 years of age and start training young Judges on how to develop their skills in judging types of alpacas and their fleeces.

Competitions take place under Show conditions. Evaluation is carried out by an AAA Ltd. Accredited Judge (the over judge). There are two sections: visual and oral.

- a. One class of four animals is judged by competitors
- b. Visual judging takes place first. Competitors are allowed a total of ten minutes to judge the four animals and to complete their placing card.
- c. The number of competitors required to present oral judgements is left to the discretion of the Chief Steward. Where the number of competitors is large, it may be appropriate to select the top eight visual class scorers.
- d. In the visual class, competitors are scored on handling, general competence, ringcraft, presentation and dress. In the oral class, they are scored on accuracy of observation, ability to compare animals and speaking ability.
- e. The competitors in the oral section are allowed two minutes to inform the over judge of the reasons for their placing.
- f. The total possible score is 150 points, made up of 50 points for correct placement of the four animals; (assessment taken from the Hormel Scale) 50 points for the visual (overall ringcraft and technique) and 50 points for oral presentation.

Junior Handler Classes

Where possible, all Agricultural Shows (including Royal Agricultural Shows) should run junior handler classes. The classes will be judged according to rules set out for each Show. A suggested junior handler course appears in Judging Criteria (Section Four)

Emphasis should be placed on Junior Handler classes. Their aim is to encourage young industry members to compete with their animals in the show ring; to teach them the responsibilities associated with exhibiting alpacas; and to help them make the experience of showing enjoyable.

SECTION FOUR: JUDGING CRITERIA

Refer Section Three for Selected Class Definitions.

Alpaca Halter Classes Judging Criteria

In the show arena, alpaca judging is scored as follows:

- Fleece 60%
- Conformation 40%

As the alpacas enter the Show ring, the Judge will look for relevant conformation attributes and potential weaknesses:

- Correct conformation. Does the animal walk freely? Are there any visible leg problems? Any other issues?
- Presence, overall impression. Is the animal true to the Breed Standard?

After the alpacas are lined up, the Judge will carefully examine the fleeces and look again at correct conformation and presentation.

Fleece:

- Fineness
- Density
- Handle
- Lustre
- Uniformity of micron
- Uniformity of length
- Character (crimp and staple formation)
- Style (lock formation)
- Lack of guard hair
- Uniformity of colour
- Fleece coverage

Conformation/Structure:

- Correct bone structure
- Balance and proportion
- Growth for age and condition
- Head, legs and top-line
- Reproductive capabilities.

Alpaca Fleece Classes Judging Criteria

Only one fleece that has been shorn in the 18 months prior to the Show may be shown from any one animal. **For the 2021 Show Season, an exhibitor may show one fleece that has been shorn in 2019 or 2020, from any one animal.**

Fleece for showing will be judged according to the criteria shown on the fleece score card for huacaya and suri:

- Density (using micron/annualised weight matrix)
- Handle
- Uniformity of micron/length/colour across the fleece
- Uniformity of micron within lock
- Character and style (crimp in huacaya; lock style in suri)
- Lustre / Brightness
- Impurities/stain/tip damage
- Effective Skirting

The Judge will score the fleece, taking all the above categories into consideration. He/she will be looking for a well-presented, properly skirted fleece with lustre and the fine/soft handle of uniform micron. The staple should have clear-cut formation throughout. The fleece is weighed by the Stewards prior to judging. All fleece weights shall consider the age of the fleece and for the purpose of allocating points the weights shall be annualised. In skirting, there is a balance between discarding too much fibre adversely affecting the fleece weight and keeping the clean fleece weight up, but leaving in lesser quality, uneven fibres which may detract from the overall fleece. Where appropriate the fleece micron shall be determined by testing.

Most Valuable Fleece Class Judging Criteria

This class will be judged on a commercial basis for overall dollar value of each fleece, based on current prices that can be obtained on local/ international markets. The valuation is calculated taking into consideration - fineness, length, overall excellence (style), faults, yield (impurities) and fleece weight. No fleece weight annualisation will take place in this class as the fleece is judged solely on how it presents for commercial processing. **It is mandatory for fleeces entered in this class to undergo fleece testing.**

Sire's and Dam's Progeny Fleece Class Judging Criteria

Judging criteria for the Sire's and Dam's Progeny Fleece Classes shall include:

- Consistency of positive fleece traits exhibited by both fleeces within the group.
- Uniformity of positive fleece characteristics exhibited by both fleeces within the group.
- Uniformity of type and style exhibited by both fleeces within the group.
- Absence of negative traits.

Judging protocol for Fleece Group classes

Both classes will be judged relatively, not using a new scorecard.

Both classes will be judged by all the Fleece Judges who are judging at the show if there are multiple Judges. Decisions on final class placements will be made by consensus.

Young Judges – Judging Criteria

Competitions take place under show conditions. Evaluation is carried out by an AAA Ltd.

Accredited judge (the over judge). There are two sections: visual and oral.

1. One class of four animals is judged by competitors.
2. Visual judging takes place first. Competitors are allowed ten minutes to judge the four animals and to complete their placing card.
3. The number of competitors required to present oral judgements is left to the discretion of the Chief Steward.
4. Where the number of competitors is large, it may be appropriate to select the top eight visual class scorers.
5. In the visual class, competitors are scored on handling, general competence, ringcraft, presentation and dress. In the oral class, they are scored on accuracy of observation, ability to compare animals and speaking ability.
6. The competitors in the oral section are allowed two minutes to inform the over judge of the reasons for their placing.
7. The total possible score is 150 points, made up of 50 points for correct placement of the four animals; (assessment taken from the Normal Scale) 50 points for the visual and 50 points for oral presentation.
8. Convenors may obtain details of procedures from the AAA Ltd National Office.

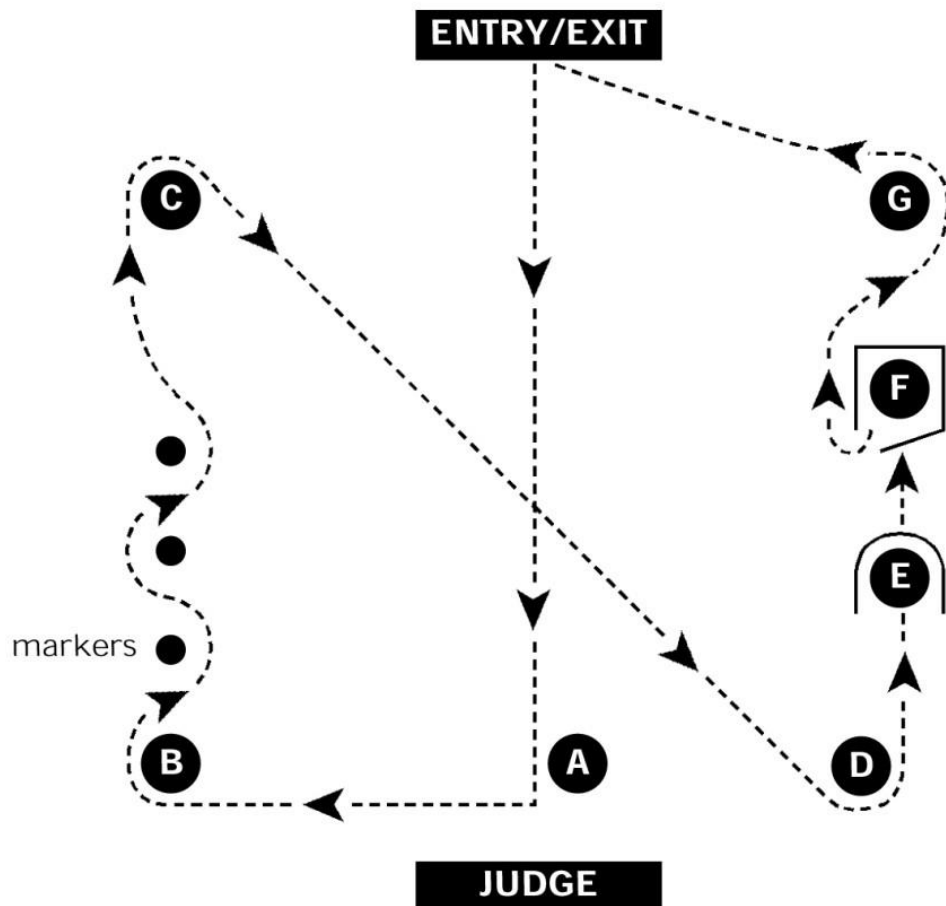
Junior Handler Classes

May be entered on the day of the Show before 12 noon or a time nominated by the Chief Steward.

Suggested Junior Handlers' Course

Course Description Points

1. Enter – Proceed to A – halt – acknowledge Judge [10 points]
2. Advance to B – turn right and proceed through markers to C [20 points]
3. Turn right at C – advance diagonally to D with loose lead [20 points]
4. Turn left and go through arch E [15 points]
5. Advance to pen F – open with assistance from Steward – enter pen and remove halter and put back on [20 points]
6. Leave pen – advance to G – turn left and exit [5 points]
7. Overall presentation of the combination of handler and alpaca [10 points]



SECTION FIVE: ALPACA BREED STANDARD

HUACAYA AND SURI CONFORMATION

The alpaca is a tall, graceful animal with a smoothly blended body and upright stance. It carries its head high. It is strong boned and vigorous. It has good conformation with all its parts in correct proportion and when true to type has the characteristics described in this standard.

Head

The head has a strong appearance and is not coarse. It is neatly formed, of medium length and with a square muzzle. The eyes are oval in shape, alert and set well apart. They protrude slightly from their sockets, giving the appearance of being large and round. They may be blue, brown or black. The nose has two well-defined nostrils. The upper lip is divided and mobile. The ears are of medium length, covered with short soft hair, erect and bayonet-shaped, pointing forward in the alert stance. Suri ears can be up to 2cms longer than huacaya ears. The jaws fit together well, with the lower incisors meeting the upper dental pad.

Faults

- Muffled face (fibre or hair impeding the animal's vision - particularly after first shearing)
- Wry face
- Head very narrow
- Face hard and open
- Roman nose
- Lower jaw undershot or overshot

Neck

The neck is long and slender and continues directly from the line of the backbone, blending smoothly into the shoulder.

Faults

- Length of neck disproportionate to body size (too long or too short)
- Neck bent or U-neck

Forequarters

The chest is broad and deep, well sprung in the fore-rib. The wither is relatively wide where the shoulders meet, well fleshed and set well into the shoulders forming a straight line with the back.

Faults

- Narrow chest
- Loose shoulder blades
- In or out at the elbows
- *Prominent* wither

Body

The body is deep through the girth, with well-sprung ribs. The back is strong, and the top-line is slightly convex. The loins are broad, strong and flat, with the back barrel large and deep.

Faults

- Roach back
- Sway Back
- Over-long straight back

Hindquarters

The rump is broad with a slightly convex top line. There is good space between the pin bones. The tail is straight, covered with quality fibre, set slightly lower than in other livestock and should cover the genitalia. The thighs are strong and well-muscled. The height of the pin-bones equals that of the shoulders.

Faults

- Narrow hindquarters
- Bent or kinked tail that cannot be manually straightened or where there are no signs of a break/calcification
- Steeply sloping rump

Legs

The forelegs are strong and straight. The hind legs are straight and parallel when viewed from behind. The pasterns are firm and upright. The feet are neat and well-formed and bear two forward pointing toes each carrying a long strong toenail. The sole of the foot is covered with a callused membrane.

Faults

- Weak pasterns
- Obvious carpal
- Cow hocks
- Sickie hocks

Udder

The udder should show good capacity, with four working teats.

Faults

- Less or more than four teats
- Inverted teat(s) (irrespective of number and position)

Testicles

The scrotum is well attached, relatively small and carries two even sized testes.

Faults

- Testes of uneven size
- Testes too small (relative to age)

Height and Weight

A mature animal measures from approximately 90 cm at the wither and weighs from approximately 60 kg upwards.

Faults

- Oversized - particularly if llama-like characteristics present

Movement

Alpacas should exhibit an even stride length with two distinct tracks, the hind feet following the front ones.

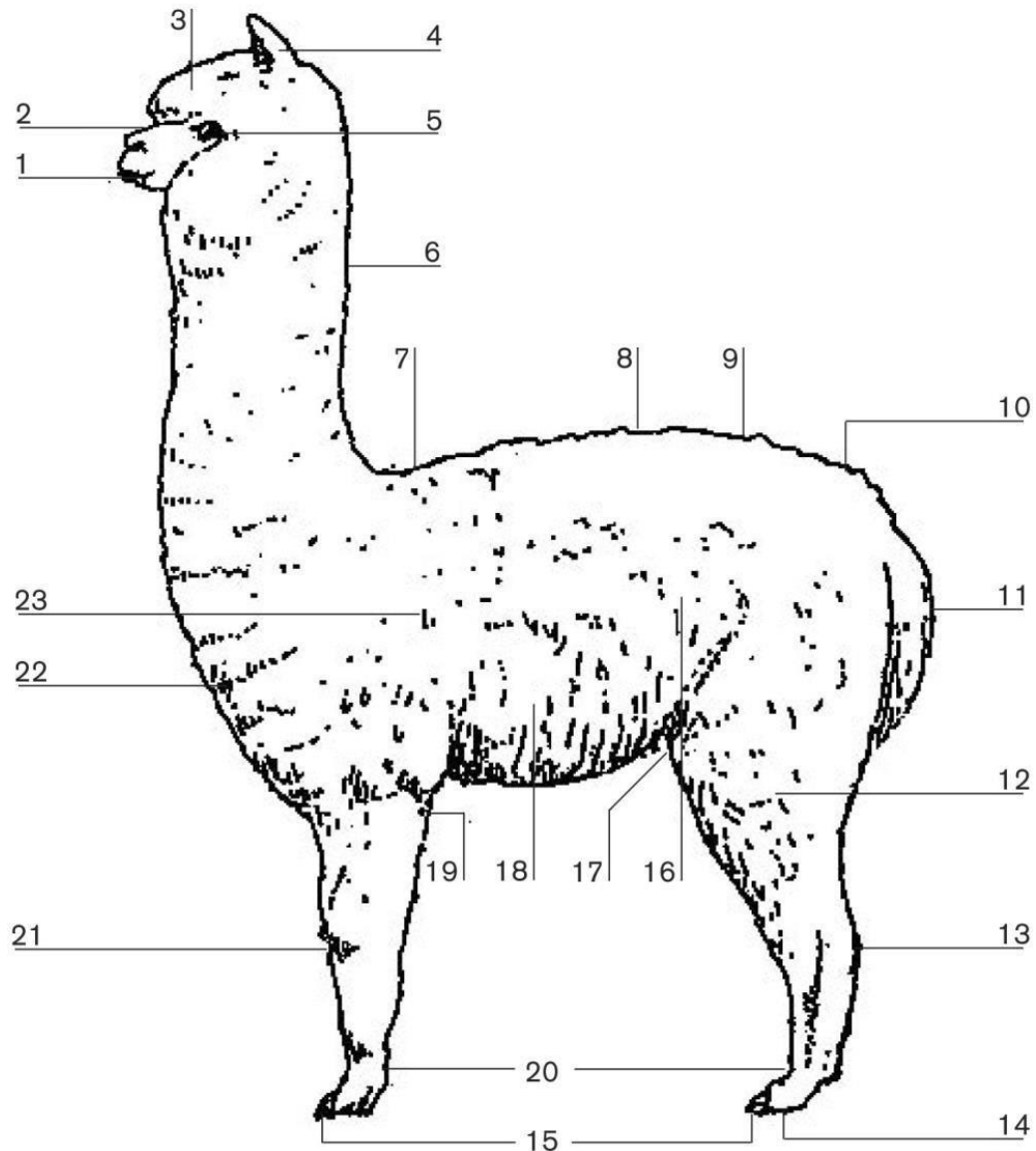
Faults

- Uneven stride length
- Paddling on the front feet

Disqualifying Faults

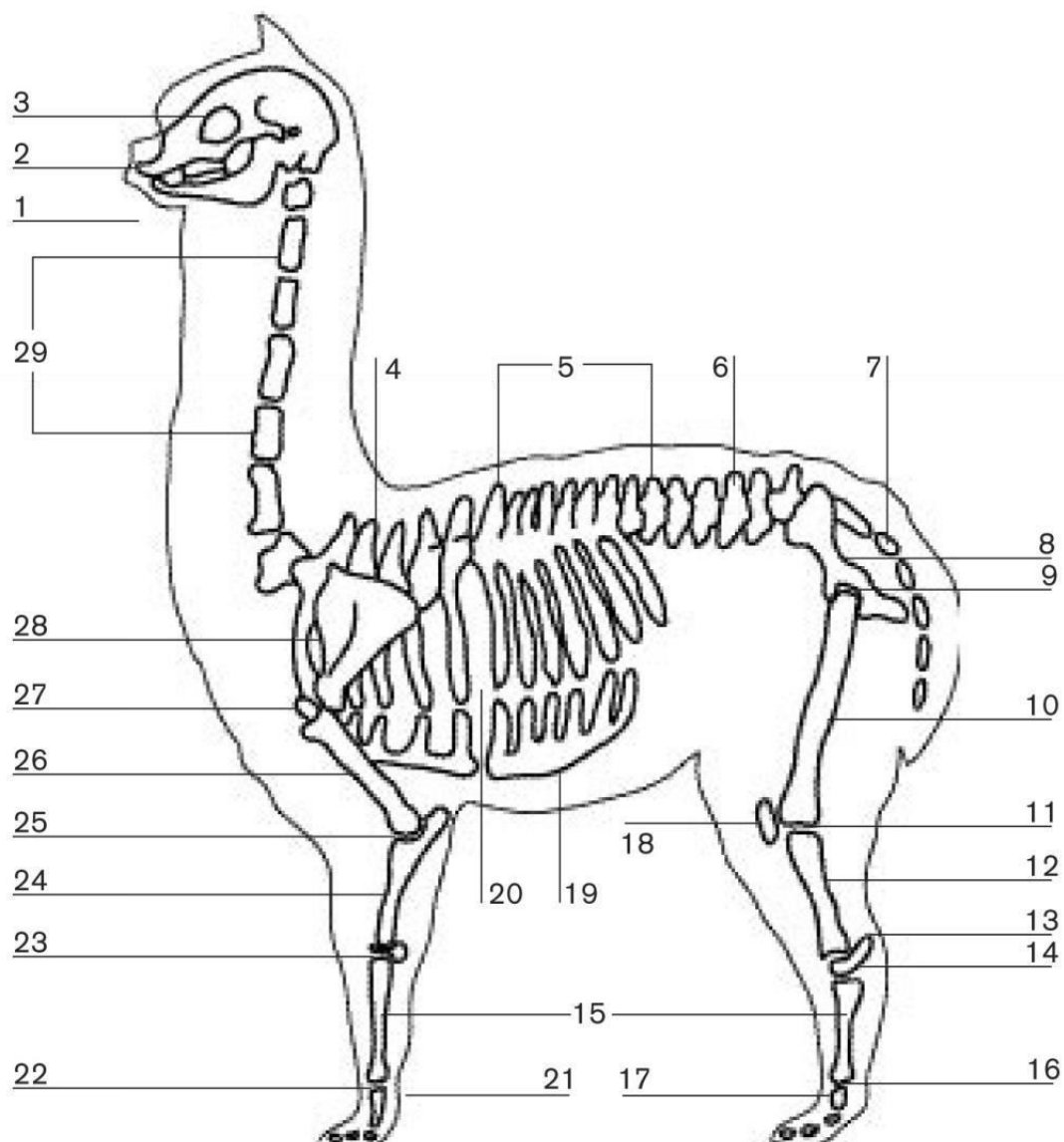
- Polydactylism (more than two toes on each foot)
- Syndactylism (fusion of the two toes of the same foot)
- Fused ears (short stubby ears or fused at the tips)
- Banana shaped ears
- Tail absent or abnormally short or bent
- Fewer than two testes
- Jaw not properly aligned
- Jaw excessively overshot
- Jaw excessively undershot

Points of the Huacaya Alpaca



-
- | | | |
|---------------|-------------|---------------------|
| 1. Mouth | 11. Tail | 21. Knee |
| 2. Muzzle | 12. Thigh | 22. Apron/bib/chest |
| 3. Bonnet/bob | 13. Hock | 23. Shoulder |
| 4. Ears | 14. Pad | |
| 5. Eyes | 15. Toenail | |
| 6. Neck | 16. Flank | |
| 7. Withers | 17. Stifle | |
| 8. Back | 18. Ribs | |
| 9. Croup | 19. Elbow | |
| 10. Rump | 20. Pastern | |

Bone Structure of the Alpaca



- | | | |
|-------------------------------|------------------------------|------------------------------|
| 1. Lower jaw (mandible) | 11. Stifle joint | 21. Front pastern |
| 2. Upper jaw (maxilla) | 12. Leg bone (tibia) | 22. Ankle joint (fetlock) |
| 3. Eye socket | 13. Point of the hock | 23. Knee joint (radius) |
| 4. Withers | 14. Hock joint | 24. Forearm (radius) |
| 5. Back (thoracic vertebrae) | 15. Cannon bone (metacarpus) | 25. Elbow joint |
| 6. Loin (lumbar vertebrae) | 16. Ankle joint (fetlock) | 26. Humerus |
| 7. Tail (coccygeal vertebrae) | 17. Hind pastern | 27. Shoulder joint |
| 8. Pelvis | 18. Knee cap (patella) | 28. Shoulder blade (scapula) |
| 9. Hip joint | 19. Breast bone (sternum) | 29. Neck vertebrae |
| 10. Thigh bone (femur) | 20. Ribs | (cervical vertebrae) |

HUACAYA FLEECE

Huacayas are distinguishable from suris in that they carry sheep like fleece, which stands at right angles to the body. The fleece should exhibit a strong wave or crimp across each fibre and have strong staple definition. The alpaca should be well covered with a rounded appearance. Coverage should extend down the legs and up to a bonnet on the head with a clean muzzle and ears.

The most important characteristics of huacaya fleece are:

- **Density** - this is perhaps the most important as it determines the commerciality of the fleece i.e. the quantity of saleable fleece to be sold. It also prevents dirt and moisture penetration.
- **Fineness and Handle** - fineness sets the value of a fleece per unit weight. The finer the fleece the more per kilo it will make. Soft handle goes with fineness. The softer the handle the finer the micron.
- **Character** - is closely related to density, as strong crimp definition and staple formation is necessary to achieve heavy fleece weights.
- **Lack of Medullation** - fleece should not contain broad micron straight medullated fibres, especially throughout the main blanket. The aim being to eliminate it completely.
- **Lustre** - this is the amount of light reflected from the fibre, which enhances its appearance when processed into a garment.

Other determining factors are: -

- **Uniformity of micron** - processors require fleece with minimum variation in fibre diameter. This also helps to eliminate fleece tenderness (fleece breakage).
- **Uniformity of colour** - an even colour is preferred by processors, but allowances need to be made for greys and fawns which can have colour variation.
- **Uniformity of length** - the fleece should be of the same length for 12 months growth. The aim is to have the neck fibre match the main blanket in length, thus increasing the weight of the prime fleece.

Colour

Alpaca fleece comes in varying shades of colour from white to black. In between there are shades of fawn, brown, and grey as well as roan. Animals may be solid in colour or be any combination of the above.

Faults

- Open fleece with no density
- Chalkiness
- Harsh handle
- Short staple length
- Medullated fibre
- Lack of overall coverage
- Tenderness

SURI FLEECE

The suri carries a silky, soft-handling fleece that moves freely, yet hugs the body giving the animal a flatsided appearance. The fleece hangs from a centre part - neck through to tail - with well-defined locks forming close to the skin and twisting uniformly to the ends. The overall effect is similar to the drape of a curtain of silk tassels.

The primary characteristics which distinguish a suri are its lock structure, high lustre, silky handle and long staple length. The ideal suri exhibits little medullation, resulting in uniformity throughout the fleece.

The most important characteristics of suri fleece are: -

- **Lustre and Lock Structure** (these two qualities define suri fibre) - Lustre is the sheen or pearlyness in the fleece. The lock structure may be twisted, curled or pencilled. They should be well defined (referred to as architecture), narrow, independent, uniform and form close to the skin. The most highly desirable architecture has a firm uniform twisted lock. The locks should be consistent across the body commencing from the forelock and continuing through to the hocks. When the fleece is opened, the inside locks should be uniformly well defined and hang in similarly well formed layers.
- **Fineness and Handle** - A fine micron fleece has a soft handle. The handle of the suri should also have a silky, slippery feel and be evident throughout the body, ideally including the ears, forelock, muzzle, apron, belly, neck and legs.
- **Density** - The hallmark of the ideal suri fleece is its compactness. This is synonymous with high fleece weights. A more rounded appearance can indicate volume (fluffiness) rather than density. Density is evident by gauging the solidity of lock (or thickness in terms of density, not broadness of lock), the number of locks over a relative area as well as the weight of the fleece.
- **Lack of Medullation** - Ideally there should be little or no evidence of medullated fibres in the fleece.
- **Lock Length** - The lock of a suri is relatively long and its fibre should grow one or two centimetres per year longer than a huacaya of similar age and micron.

Other determining factors are as for huacaya: - uniformity of micron, colour and length.

Colour

Suri fleece comes in varying shades of colour from white to black. In between there are shade of fawn, brown and grey including roan. Ideally the alpacas are solid in colour but may be any combination of the above.

Faults

- Flat, open fleece with no lock definition (architecture)
- Medullation
- Chalkiness or lack of lustre
- Short staple length for age of fleece
- Coarse handle
- Lack of density
- Rounded appearance indicating fluffiness rather than density
- Crimp

SECTION SIX: CONDUCTING A SHOW

All AAA endorsed shows must be run as per the AAA Show Schedule – refer Show Section of the AAA website.

Alpaca Show Classes

The official Association Show Classes for halter and fleece classes can be found in Section Two of this manual.

The mandatory classes must be used at all Association shows, although it is recognized that age classes may be joined where there are insufficient exhibits or split where there are a suitable number of exhibits.

Minimum Number of Entries

As set out in Rule 2, for an Association approved Show to proceed, there must be a minimum number of 50 animal entries. Relevant Health Declarations are to be completed in accordance with appropriate Rules in force at the time.

The Show shall follow the order shown in the Schedule, which should clearly state:

- a) That the Chief Steward or Inspection Steward has the ultimate power to classify all entries for colour and to inspect each exhibit for identity and any disqualifying faults.
- b) That the Chief Steward or Inspection Steward has the power to transfer an exhibit to another class if deemed appropriate in his/her opinion.
- c) That the Show will be conducted under AAA Ltd. Showing Rules. (Some of the more important Rules may be reprinted in the listing).
- d) It is recommended that classes for suri and huacaya are alternated.

Alpaca Show Entry Forms

Format: alpaca classes

The following information must appear on the Alpaca Section Entry Form for all shows.

- a) Section and Class numbers
- b) Sex
- c) Australian Alpaca Association Ltd. registered animal name, including herd prefix
- d) IAR number
- e) Date of birth of alpaca exhibit
- f) Date of last shearing
- g) AAA Ltd. registered name of the sire and dam, including herd prefixes
- h) Declaration signed by the exhibitor or authorised agent including penning details stating that all information contained therein is true and correct
- i) Health declaration form

Format: fleece classes

Alpaca fleece being shown must be the property of the exhibitor. The following information must appear on the Alpaca Fleece Section Entry Form for all shows.

- a) Section and Class number
- b) Australian Alpaca Association Ltd. registered animal name, including herd prefix
- c) Date of shearing
- d) Age of animal when shorn, in months
- e) Age of fleece, in months
- f) Colour
- g) Name of the sire and dam, including herd prefixes

- h) Signed declaration by the exhibitor or authorised agent stating that all information contained therein is true and correct
- i) Only one fleece that has been shorn in the 18 months prior to the Show may be shown from any one animal

Insurance

Prior to the Show the Show Convenor shall contact either the AAA Ltd. National Office and obtain details of the insurance cover that applies to members, animals and the general public from the day of penning until the closure of the Show.

Any reports of incidents that could result in a claim of damage, loss or injury sustained from the day of penning to the close of the Show shall be recorded by the Show Convenor and a written report supplied to the AAA Ltd. National Secretary within 5 days of the completion of the Show.

Risk Assessment

Convenors required to undertake a risk assessment and have an Injury/Incident Register

Steward General Information

The Chief Steward is responsible for the conduct of a Show Day and for the activities of all Stewards. An efficient Ring Steward is one who assists the Judge to be effective in his/her role and facilitates the process of judging to run smoothly and efficiently.

Main duties of Stewards

Chief Steward

A Chief Steward must be familiar with all matters pertaining to the showing of alpacas, including:

- showing etiquette;
- judging criteria and procedure;
- correct exhibitor behaviour and attire;
- relevant Show Rules, pertaining to the alpaca section, which may be in force on the Show Day;
- liaison with Show Committee and exhibitors;

Procedures relating to individual shows

It is also the function of the Chief Steward, Ring Steward, Master of Ceremonies and Marshalling Stewards to be fully aware of the showing procedure used at any Show. For example:

- where animals are to be on the grounds;
- how the Judge wants the animals paraded and lined up in relation to the audience and/or the light source.

Management of exhibitors

There are also management duties in relation to exhibitors in the ring. For example:

- ensuring there is appropriate spacing between alpacas as they are paraded.
- ensuring exhibitors make the most advantageous use of arena space by asking exhibitors to walk their alpacas as directed by the Judge
- ensuring exhibitors are aware of the requirements for the judging of Reserve Champions.

Presentations and awards

Before commencement of judging, the Chief Steward or Ring Steward should know the location of ribbons and awards, where to place them in the ring while judging is proceeding and how to assist the Judge in their correct presentation.

Impartiality

Stewards, like Judges, must act impartially. While common sense is a valuable attribute, the ultimate reference is provided by the rules set down in this publication.

Procedures for Sampling Fleeces for Show

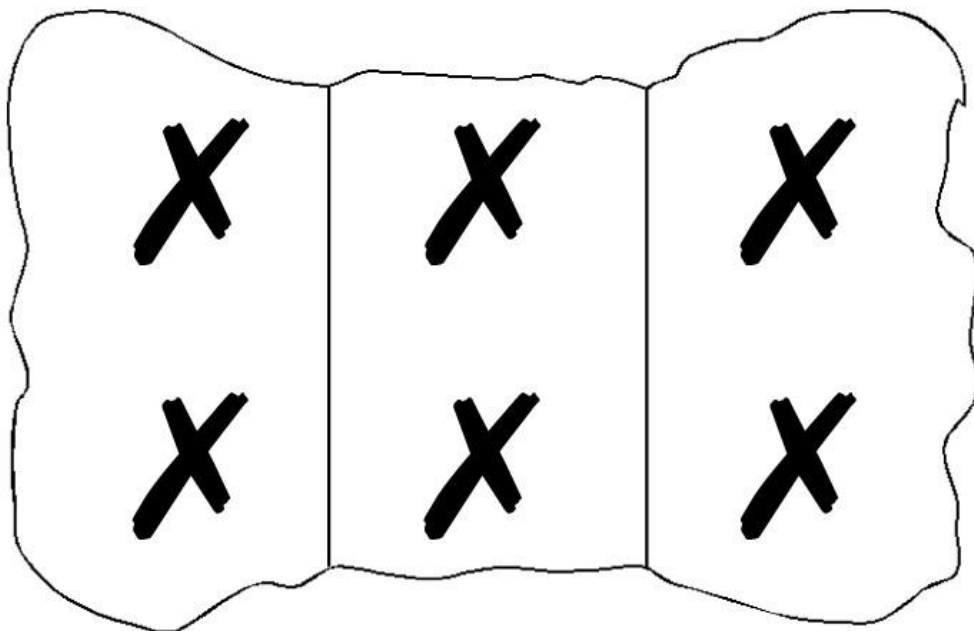
Rationale

This procedure is developed to ensure consistency in sampling fleeces being tested for shows and to avoid, as near as possible, incorrect results due to biased samples. This procedure removes the random single sample from a bag of fleece (hit and miss) and removes the time consuming "grid sampling" (most accurate).

Note - this procedure is not to take the place of mid-side or grid sampling carried out by breeders.

Procedure

1. Fill in identification tag with Name of Show, Class and Entry No
2. This shall be completed each time a new fleece is sampled. Do not fill in before as a group or after sampling is completed. It must be done when each fleece is sampled.
3. Remove fleece from bag and spread on table.
4. Imagine the fleece in three sections



5. Take two staples from each of the six positions marked.
6. Place all twelve staples collected into a plastic bag and insert the identification tag in the bag, filled out as mentioned in Step 1.

7. When all fleeces have been sampled place all bags into a larger bag and send to an approved testing laboratory.

Since a multi-site sample has been collected from each fleece, it is recommended that a minicore test on the total sample for each fleece is the most appropriate test to use for calculating the average micron.

The standard for testing fleece for shows using the OFDA2000 should be with the Trim High setting off. This will provide a true reading of the fleece and be compatible with readings from other instruments.

Championship Sashes and Prize Ribbons (Age Championship Shows)

Ribbons may be awarded to placegetters in their classes as outlined below. Sashes will be awarded to all Champion and Reserve Champions. All Champion and Reserve Champion sashes must bear the name of the relevant Show.

Suri Championship Awards for Major Shows (Nationals and Royals)

- Junior Champion Female Suri
- Reserve Junior Champion Female Suri
- Junior Champion Male Suri
- Reserve Junior Champion Male Suri
- Intermediate Champion Female Suri
- Reserve Intermediate Champion Female Suri
- Intermediate Champion Male Suri
- Reserve Intermediate Champion Male Suri
- Adult Champion Female Suri
- Reserve Adult Champion Female Suri
- Adult Champion Male Suri
- Reserve Adult Champion Male Suri
- Senior Champion Female Suri
- Reserve Senior Champion Female Suri
- Senior Champion Male Suri
- Reserve Senior Champion Male Suri
- Mature Champion Female Suri (optional)
- Reserve Mature Champion Female Suri (optional)
- Mature Champion Male Suri (optional)
- Reserve Mature Champion Male Suri (optional)
- Supreme Champion Suri
- Sire's Progeny
- Dam's Progeny
- Champion Suri Fleece
- Reserve Champion Suri Fleece
- Sire's Progeny Fleece *
- Dam's Progeny Fleece *

* *Progeny Fleece classes are for the National Show, Royals and other significant fleece shows with in excess of 100 fleece exhibits. Fleeces must be received at least three days prior to judging.*

Additional Suri Fleece Champions (for Major Shows)

- Champion Suri Fleece 6 to under 18 months
- Reserve Champion Suri Fleece 6 to under 18 months
- Champion Suri Fleece 18 to under 30 months
- Reserve Champion Suri Fleece 18 to under 30 months

- Champion Suri Fleece 30 months and over
- Reserve Champion Suri Fleece 30 months and over
- Supreme Champion Suri Fleece

Huacaya Championship Awards

- Junior Champion Female Huacaya
- Reserve Junior Champion Female Huacaya
- Junior Champion Male Huacaya
- Reserve Junior Champion Male Huacaya
- Intermediate Champion Female Huacaya
- Reserve Intermediate Champion Female Huacaya
- Intermediate Champion Male Huacaya
- Reserve Intermediate Champion Male Huacaya
- Adult Champion Female Huacaya
- Reserve Adult Champion Female Huacaya
- Adult Champion Male Huacaya
- Reserve Adult Champion Male Huacaya
- Senior Champion Female Huacaya
- Reserve Senior Champion Female Huacaya
- Senior Champion Male Huacaya
- Reserve Senior Champion Male Huacaya
- Mature Champion Female Huacaya
- Reserve Mature Champion Female Huacaya
- Mature Champion Male Huacaya
- Reserve Mature Champion Male Huacaya
- Supreme Champion Huacaya
- Sire's Progeny
- Dam's Progeny
- Champion Huacaya Fleece
- Reserve Champion Huacaya Fleece
- Most Valuable Fleece

Additional Huacaya Fleece Champions (for Major Shows)

- Champion Huacaya Fleece 6 to under 12 months
- Reserve Champion Huacaya Fleece 6 to under 12 months
- Champion Huacaya Fleece 12 to under 18 months
- Reserve Champion Huacaya Fleece 12 to under 18 months
- Champion Huacaya Fleece 18 to under 30 months
- Reserve Champion Huacaya Fleece 18 to under 30 months
- Champion Huacaya Fleece 30 to under 60 months
- Reserve Champion Huacaya Fleece 30 to under 60 months
- Champion Huacaya Fleece 60 months and over
- Reserve Champion Huacaya Fleece 60 months and over
- Supreme Champion Huacaya Fleece
- Sire's Progeny Fleece *
- Dam's Progeny Fleece *

* *Progeny Fleece classes are for the National Show, Royals and other significant fleece shows with in excess of 100 fleece exhibits. Fleeces must be received at least three days prior to judging.*

Non-Championship Awards

Sashes will be awarded.

- Best Wether

- Best Junior Handler
- Champion Young Judge

No. of Exhibits Prizes which may be awarded

Up to 8: 1st, 2nd, 3rd

9 – 12: 1st, 2nd, 3rd, 4th

13 – 19: 1st, 2nd, 3rd, 4th, 5th

Highly commended awards at any time

More than one Highly Commended ribbon **may** be awarded in any one class, at the judge's discretion, to reward the presence of extra depth and quality in the line-up of alpacas/fleeces being shown.

Ribbon Colours

Blue - 1st, Red - 2nd, White - 3rd, Yellow - 4th, Green - 5th

Recommended Suri Placing Running Sheet

| SECTIONS | | WHITE | LIGHT FAWN | MEDIUM/ DARK FAWN | BROWN | ROAN | GREY | BLACK | FANCY | CHAMPION | RESERVE |
|------------------------|--------------------------|--------|---------------|----------------------|--------|--------|--------|--------|--------|----------|---------|
| Junior Female | CLASS | HAWSJF | HALSJF | HAFSJF | HABSJF | HARSJF | HAGSJF | HAKSJF | HAYSJF | | |
| | 1 st Place | | | | | | | | | | |
| | 2 nd Place | | | | | | | | | | |
| Junior Male | CLASS | HAWSJM | HALSJM | HAFSJM | HABSJM | HARSJM | HAGSJM | HAKSJM | HAYSJM | | |
| | 1 st Place | | | | | | | | | | |
| | 2 nd Place | | | | | | | | | | |
| Intermediate Female | CLASS | HAWSIF | HALSIF | HAFSIF | HABSIF | HARSIF | HAGSIF | HAKSIF | HAYSIF | | |
| | 1 st Place | | | | | | | | | | |
| | 2 nd Place | | | | | | | | | | |

| | | | | | | | | | | | |
|-------------------|-----------------------|--------|--------|--------|--------|--------|--------|--------|--------|--|--|
| Intermediate Male | CLASS | HAWSIM | HALSIM | HAFSIM | HABSIM | HARSIM | HAGSIM | HAKSIM | HAYSIM | | |
| | 1 st Place | | | | | | | | | | |
| | 2 nd Place | | | | | | | | | | |
| Adult Female | CLASS | HAWSAF | HALSAF | HAFSAF | HABSAF | HARSAF | HAGSAF | HAKSAF | HAYSAF | | |
| | 1 st Place | | | | | | | | | | |
| | 2 nd Place | | | | | | | | | | |
| Adult Male | CLASS | HAWSAM | HALSAM | HAFSAM | HABSAM | HARSAM | HAGSAM | HAKSAM | HAYSAM | | |
| | 1 st Place | | | | | | | | | | |
| | 2 nd Place | | | | | | | | | | |
| Senior Female | CLASS | HAWSSF | HALSSF | HAFSSF | HABSSF | HARSSF | HAGSSF | HAKSSF | HAYSSF | | |
| | 1 st Place | | | | | | | | | | |
| | 2 nd Place | | | | | | | | | | |

| | | | | | | | | | | | |
|------------------|--------------------------|--------|------------|------------------|--------|--------|--------|--------|--------|--|--|
| Senior Male | CLASS | HAWSSM | HALSSM | HAFSSM | HABSSM | HARSSM | HAGSSM | HAKSSM | HAYSSM | | |
| | 1 st Place | | | | | | | | | | |
| | 2 nd Place | | | | | | | | | | |
| Mature Female | CLASS | HAWSMF | HALSMF | HAFSMF | HABSMF | HARSMF | HAGSMF | HAKSMF | HAYSMF | | |
| | 1 st Place | | | | | | | | | | |
| | 2 nd Place | | | | | | | | | | |
| Mature Male | CLASS | HAWSMF | HALSMF | HAFSMF | HABSMF | HARSMF | HAGSMF | HAKSMF | HAYSMF | | |
| | 1 st Place | | | | | | | | | | |
| | 2 nd Place | | | | | | | | | | |
| SUPREME CHAMPION | | | | | | | | | | | |
| Best Colour | | WHITE | LIGHT FAWN | MEDIUM/DARK FAWN | BROWN | ROAN | GREY | BLACK | FANCY | | |
| | | | | | | | | | | | |

Recommended Huacaya Placing Running Sheet

| SECTIONS | | WHITE | LIGHT FAWN | MEDIUM/ DARK FAWN | BROWN | ROAN | GREY | BLACK | FANCY | CHAMPION | RESERVE |
|------------------------|--------------------------|--------|---------------|----------------------|--------|--------|--------|--------|--------|----------|---------|
| Junior Female | CLASS | HAWHJF | HALHJF | HAFHJF | HABHJF | HARHJF | HAGHJF | HAKHJF | HAYHJF | | |
| | 1 st Place | | | | | | | | | | |
| | 2 nd Place | | | | | | | | | | |
| Junior Male | CLASS | HAWHJM | HALHJM | HAFHJM | HABHJM | HARHJM | HAGHJM | HAKHJM | HAYHJM | | |
| | 1 st Place | | | | | | | | | | |
| | 2 nd Place | | | | | | | | | | |
| Intermediate Female | CLASS | HAWHIF | HALHIF | HAFHIF | HABHIF | HARHIF | HAGHIF | HAKHIF | HAYHIF | | |
| | 1 st Place | | | | | | | | | | |
| | 2 nd Place | | | | | | | | | | |

| | | | | | | | | | | | |
|-------------------|-----------------------|--------|--------|--------|--------|--------|--------|--------|--------|--|--|
| Intermediate Male | CLASS | HAWHIM | HALHIM | HAFHIM | HABHIM | HARHIM | HAGHIM | HAKHIM | HAYHIM | | |
| | 1 st Place | | | | | | | | | | |
| | 2 nd Place | | | | | | | | | | |
| Adult Female | CLASS | HAWHAF | HALHAF | HAFHAF | HABHAF | HARHAF | HAGHAF | HAKHAF | HAYHAF | | |
| | 1 st Place | | | | | | | | | | |
| | 2 nd Place | | | | | | | | | | |
| Adult Male | CLASS | HAWHAM | HALHAM | HAFHAM | HABHAM | HARHAM | HAGHAM | HAKHAM | HAYHAM | | |
| | 1 st Place | | | | | | | | | | |
| | 2 nd Place | | | | | | | | | | |
| Senior Female | CLASS | HAWHSF | HALHSF | HAFHSF | HABHSF | HARHSF | HAGHSF | HAKHSF | HAYHSF | | |
| | 1 st Place | | | | | | | | | | |
| | 2 nd Place | | | | | | | | | | |

| | | | | | | | | | | | |
|---------------------|--------------------------|--------|---------------|---------------------|--------|--------|--------|--------|--------|--|--|
| Senior Male | CLASS | HAWHSM | HALHSM | HAFHSM | HABHSM | HARHSM | HAGHSM | HAKHSM | HAYHSM | | |
| | 1 st Place | | | | | | | | | | |
| | 2 nd Place | | | | | | | | | | |
| Mature Female | CLASS | HAWHMF | HALHMF | HAFHMF | HABHMF | HARHMF | HAGHMF | HAKHMF | HAYHMF | | |
| | 1 st Place | | | | | | | | | | |
| | 2 nd Place | | | | | | | | | | |
| Mature Male | CLASS | HAWHMF | HALHMF | HAFHMF | HABHMF | HARHMF | HAGHMF | HAKHMF | HAYHMF | | |
| | 1 st Place | | | | | | | | | | |
| | 2 nd Place | | | | | | | | | | |
| SUPREME CHAMPION | | | | | | | | | | | |
| Best Colour | | WHITE | LIGHT FAWN | MEDIUM/DARK FAWN | BROWN | ROAN | GREY | BLACK | FANCY | | |
| | | | | | | | | | | | |

Alpaca Fleece ~ Micron / Annualised Weight Matrix

| POINTS | | | | | | | | | | | | | | | | | | | | | | | | | | | | | | |
|---------|------|------|------|------|------|------|------|------|------|------|------|------|------|------|------|------|------|------|------|------|------|------|------|------|------|------|------|------|------|-------|
| Micron | 30 | 29 | 28 | 27 | 26 | 25 | 24 | 23 | 22 | 21 | 20 | 19 | 18 | 17 | 16 | 15 | 14 | 13 | 12 | 11 | 10 | 9 | 8 | 7 | 6 | 5 | 4 | 3 | 2 | 1 |
| <16 | 2.00 | 1.90 | 1.80 | 1.70 | 1.60 | 1.50 | 1.40 | 1.30 | 1.20 | 1.10 | 1.00 | 0.95 | 0.90 | 0.85 | 0.80 | 0.75 | 0.70 | 0.65 | 0.60 | 0.55 | 0.50 | 0.45 | 0.40 | 0.35 | 0.30 | 0.25 | 0.20 | 0.15 | 0.10 | <0.1 |
| 16-16.9 | 2.25 | 2.15 | 2.05 | 1.95 | 1.80 | 1.70 | 1.60 | 1.45 | 1.35 | 1.25 | 1.15 | 1.10 | 1.00 | 0.95 | 0.90 | 0.85 | 0.80 | 0.75 | 0.65 | 0.60 | 0.55 | 0.50 | 0.45 | 0.40 | 0.35 | 0.30 | 0.25 | 0.15 | 0.10 | <0.1 |
| 17-17.9 | 2.55 | 2.40 | 2.30 | 2.15 | 2.05 | 1.90 | 1.80 | 1.65 | 1.55 | 1.40 | 1.25 | 1.20 | 1.15 | 1.10 | 1.00 | 0.95 | 0.90 | 0.85 | 0.75 | 0.70 | 0.65 | 0.55 | 0.50 | 0.45 | 0.40 | 0.30 | 0.25 | 0.20 | 0.15 | <0.15 |
| 18-18.9 | 2.85 | 2.70 | 2.55 | 2.45 | 2.30 | 2.15 | 2.00 | 1.85 | 1.70 | 1.55 | 1.40 | 1.35 | 1.30 | 1.20 | 1.15 | 1.05 | 1.00 | 0.95 | 0.85 | 0.80 | 0.70 | 0.65 | 0.55 | 0.50 | 0.45 | 0.35 | 0.30 | 0.20 | 0.15 | <0.15 |
| 19-19.9 | 3.15 | 3.00 | 2.85 | 2.70 | 2.55 | 2.35 | 2.20 | 2.05 | 1.90 | 1.75 | 1.60 | 1.50 | 1.40 | 1.35 | 1.25 | 1.20 | 1.10 | 1.05 | 0.95 | 0.85 | 0.80 | 0.70 | 0.65 | 0.55 | 0.50 | 0.40 | 0.30 | 0.25 | 0.15 | <0.15 |
| 20-20.9 | 3.50 | 3.30 | 3.15 | 2.95 | 2.80 | 2.60 | 2.45 | 2.25 | 2.10 | 1.90 | 1.75 | 1.65 | 1.55 | 1.50 | 1.40 | 1.30 | 1.20 | 1.15 | 1.05 | 0.95 | 0.85 | 0.80 | 0.72 | 0.60 | 0.55 | 0.45 | 0.35 | 0.25 | 0.20 | <0.2 |
| 21-21.9 | 3.85 | 3.65 | 3.45 | 3.25 | 3.10 | 2.90 | 2.70 | 2.50 | 2.30 | 2.10 | 1.95 | 1.85 | 1.75 | 1.65 | 1.55 | 1.45 | 1.35 | 1.25 | 1.15 | 1.05 | 0.95 | 0.85 | 0.75 | 0.65 | 0.60 | 0.50 | 0.40 | 0.30 | 0.20 | <0.2 |
| 22-22.9 | 4.20 | 4.00 | 3.80 | 3.55 | 3.35 | 3.15 | 2.95 | 2.75 | 2.55 | 2.30 | 2.10 | 2.00 | 1.90 | 1.80 | 1.70 | 1.60 | 1.50 | 1.35 | 1.25 | 1.15 | 1.05 | 0.95 | 0.85 | 0.75 | 0.65 | 0.55 | 0.40 | 0.30 | 0.20 | <0.2 |
| 23-23.9 | 4.50 | 4.30 | 4.05 | 3.90 | 3.65 | 3.40 | 3.20 | 3.00 | 2.75 | 2.55 | 2.30 | 2.20 | 2.05 | 1.95 | 1.85 | 1.70 | 1.60 | 1.50 | 1.40 | 1.25 | 1.15 | 1.05 | 0.90 | 0.80 | 0.70 | 0.60 | 0.45 | 0.35 | 0.25 | <0.25 |
| 24-24.9 | 4.70 | 4.45 | 4.25 | 4.10 | 3.90 | 3.65 | 3.45 | 3.25 | 3.00 | 2.75 | 2.50 | 2.35 | 2.25 | 2.10 | 2.00 | 1.85 | 1.75 | 1.60 | 1.50 | 1.35 | 1.25 | 1.10 | 1.00 | 0.85 | 0.75 | 0.65 | 0.50 | 0.40 | 0.25 | <0.25 |
| 25-25.9 | 4.80 | 4.55 | 4.35 | 4.20 | 4.05 | 3.80 | 3.60 | 3.40 | 3.20 | 2.90 | 2.65 | 2.50 | 2.40 | 2.25 | 2.10 | 2.00 | 1.85 | 1.70 | 1.60 | 1.45 | 1.35 | 1.20 | 1.05 | 0.95 | 0.80 | 0.70 | 0.55 | 0.45 | 0.30 | <0.3 |
| 26+ | 4.90 | 4.65 | 4.45 | 4.30 | 4.15 | 3.90 | 3.75 | 3.55 | 3.30 | 3.00 | 2.75 | 2.60 | 2.45 | 2.35 | 2.20 | 2.05 | 1.90 | 1.80 | 1.65 | 1.50 | 1.40 | 1.25 | 1.10 | 1.00 | 0.85 | 0.75 | 0.65 | 0.50 | 0.30 | <0.3 |
| WEIGHT | | | | | | | | | | | | | | | | | | | | | | | | | | | | | | |

SECTION SEVEN: EXHIBITOR GENERAL INFORMATION

Preparing an alpaca for showing

Preparation is an important part of showing your animal. To present to the Show Judge a clean, well prepared animal requires planning and often, many hours of painstaking work.

Most alpacas in paddocks will have vegetable matter contamination in their fleece. It is necessary to remove this to achieve an adequately prepared alpaca.

The Judge will use his/her knowledge, experience and discretion in assessing the quality of all alpacas in the Show ring but must judge the animals as they are paraded before him/her on the day of a Show.

The most efficient way to remove excessive vegetable matter is by hand-picking.

Brushing

Brushing is not recommended, especially in the blanket area, as excessive brushing or flicking will destroy the staple definition.

Washing

If it is necessary to partly wash an alpaca to clean it for showing, this should be done several weeks prior to a Show so that the fleece has time to settle back to its natural appearance.

Never blow dry a wet alpaca. Let it dry naturally. Avoid detergents, conditioners and softeners. They will damage the fleece and destroy its natural sheen and handle.

Any urine stains should be washed out and “dags” removed by subtle trimming.

Keeping animals clean

After animals are prepared, keep them on clean pasture. If wet weather prevails, stabling or shedding is recommended.

Show Preparation

Most stud animals undergo some form of cleaning and preparation for the show ring so that they are shown to their best advantage. Not all alpacas will be advantaged by clipping and the preparation of an alpaca for the show ring must be left entirely up to the individual alpaca owner.

It is not possible to change the character of fleece of a lesser quality alpaca to that of a top-quality alpaca simply by trimming its fleece. Guard hair will remain visible to the Judge even if the ends are trimmed.

However, it is possible to change the fleece of a top-quality alpaca into that of lesser quality by over preparation which may destroy the architecture of the fleece. This may downgrade an animal whose fleece structure has been damaged by over-preparation.

Halter Training and Toenail Trimming

Correct halter training will help ensure that an alpaca will stand quietly for the Judge in the show ring. If necessary, also attend to feet.

Basic fleece preparation

- Before shearing, remove as much dust, vegetable matter and debris from the fleece as possible. Care must be taken when cleaning the fleece as excessive blowing or rough handling may destroy its staple formation and crimp definition. If a fleece is too badly contaminated, it may not be suitable for showing.

- Skirt the fleece carefully. Remove any coarse fibre, straight hairy ends or medullated sections.
- Discard any obvious sections of different colour, e.g. white pieces in a dark fleece or darker fawn fibres in a light or medium fawn fleece.
- In order to ensure the skirted fleece is of uniform length, shake the fleece to dislodge any dust or second cuts and remove any over long or very short fibres which may have contaminated the main fleece area.
- Check the fleece for soundness and ensure that there are no “tender” sections.
- Remove by hand any remaining vegetable matter, stain or other impurities.
- Some shows will stipulate how they wish a fleece to be presented to the Stewards. A fleece may be adversely affected by transporting it in a bag or container that is too small. To avoid damage or contamination of fleeces it is recommended they be placed in bags made of satin or similar material or heavy-duty plastic. Plastic garbage bags should be avoided. Relevant identification is essential.

Note: for showing purposes, a single fleece may have a limited lifespan. After being shown several times even the best fleece may become a little “tired” through over-handling and this should be taken into consideration when deciding at which shows to enter a fleece.

EXHIBITOR'S CODE OF CONDUCT (Appendix A)

Members and Exhibitors Codes of Conduct Approved by AAA Board 3 June 2020

Member Code of Conduct:

It is understood that the continuing participation of any person as a Member of the Australian Alpaca Association is subject to compliance with this Code of Conduct, and that this Code of Conduct has been approved by the Board.

All members when renewing their annual membership agree to abide by this Members' Code of Conduct, the Exhibitor Code of Conduct and to act within the Constitution of the Australian Alpaca Association (in particular clause 4.8) and the associated rules and regulations.

Under this Code of Conduct all members must:

1. At all AAA activities, public events (including shows) act in a respectful manner with integrity and honesty in all dealings related to alpacas and in all statements and actions relating to the alpaca industry. Behaviour of a harassing, discriminatory, bullying, fraudulent or disrespectful nature, including abusive or foul language, and rude gestures will not be tolerated.
2. Support the Association in its promotion, marketing and advocacy endeavours to protect the reputation and brand of the AAA and the alpaca industry as a whole.
3. Abide by the law, and Association policies, procedures and protocols;
4. Maintain the integrity of the Association IAR database. Falsification of information entered by the member into e-alpaca will result in disciplinary action.
5. Ensure a "Duty of Care" with all animal dealings and transactions to prevent any cruelty or mistreatment of alpaca and to protect the industry reputation through the implementation of acceptable animal husbandry practices.
6. Maintain the confidentiality and privacy of the Association, industry, members, stakeholders and staff by ensuring information accessed shall not be shared or used for any purpose other than the one it was provided for.

Repeated or unsubstantiated complaints

Where a member makes an allegation that is frivolous, vexatious or lacking in substance or makes such allegations repeatedly such conduct may itself constitute misconduct for the purposes of this Code of Conduct.

Suri Fleece Judging Score Card

SHOW: _____

CLASS: _____ ENTRY NO: _____

STUD: _____

ALPACA NAME: _____

| CATEGORY | DESCRIPTION | MAX | POINTS |
|--|--|-----|--------|
| Fineness / Annualised Weight | Average fibre diameter from multiple sites (as related to annualized weight from matrix) | 30 | |
| Handle | Softness, independent of fineness | 5 | |
| Uniformity of micron: <i>across entire fleece</i> | Across entire fleece (lacks variation) | 10 | |
| Uniformity of micron: <i>within staple</i> | Within lock (lack of / low presence of guard hair) | 10 | |
| Uniformity of length | Consistent length throughout | 5 | |
| Uniformity of colour | Lack of colour contamination and variation within staple and across fleece | 5 | |
| Style/Density of Lock | Well-defined lock formation and style, displaying solidity of lock. | 10 | |
| Lustre | Ability to reflect light | 15 | |
| Impurities | Lack of tenderness and impurities such as cotting, vegetable matter, dirt, seed, stain and tip damage etc. | 5 | |
| Effective skirting | Effective removal of coarse fibre and other contaminants from around fleece presented | 5 | |
| TOTAL | | 100 | |

HUACAYA FLEECE JUDGING SCORE CARD

SHOW: _____

CLASS: _____ ENTRY NO: _____

STUD: _____

ALPACA NAME: _____

| CATEGORY | DESCRIPTION | MAX | POINTS |
|--|--|-----|--------|
| Fineness / Annualised Weight | Average fibre diameter from multiple sites (as related to annualized weight from matrix) Weight: _____ | 30 | |
| Handle | Softness, independent of fineness | 5 | |
| Uniformity of micron: <i>across entire fleece</i> | Across entire fleece (lacks variation) | 10 | |
| Uniformity of micron: within staple | Within staple (lack of / low presence of guard hair) | 10 | |
| Uniformity of length | Consistent length throughout | 5 | |
| Uniformity of colour including patterning | Lack of colour contamination and variation within staple and across fleece. Includes uniformity of patterning in fancy fleeces | 5 | |
| Character and style | Crimp definition and alignment within staple and throughout fleece | 10 | |
| Density of staple | Staple Density and Definition; alignment and solidity throughout fleece | 5 | |
| Brightness | Ability to reflect light | 10 | |
| Impurities | Lack of tenderness and impurities such as cotting, vegetable matter, dirt, seed, stain and tip damage etc. | 5 | |
| TOTAL | | 100 | |