

# Queensland Region Breeders Directory



Australian Alpaca  
A S S O C I A T I O N



The Queensland Breeders Directory is a complimentary service provided by the Queensland Region of the Australian Alpaca Association for its full-paying members.

You don't need to be actively breeding alpacas to be included—just ensure you are a full or joint member of the AAA. This directory serves as a valuable tool for other alpaca owners or those interested in alpacas, helping them connect with members for sales or support.

For more details, email:  
[aaaqldpresident@gmail.com](mailto:aaaqldpresident@gmail.com) or reach out to the Queensland Alpaca Association via our Facebook page

 **Qld Alpaca Region**



# CONTENTS

Stud	Page
Altomrose Alpacas.....	5
Anne Dee Alpacas.....	6
Babinda Rainforest Farm Alpacas .....	7
Ballark Ridge Alpacas .....	8
Barr Anne Alpacas.....	9
Belli Park Alpacas.....	10
Capricorn Park Alpacas.....	11
Dara Alpacas.....	12
Didohama Suri Stud.....	13
Double-H Alpacas.....	14
Dunroca Alpacas .....	15
Engle End Farm Alpacas.....	16
Golden Charm Alpacas .....	17
Hannamay Park.....	18
Kidaman Creek Suris.....	19
Kings Ransom Alpacas.....	20
Majeska Alpacas .....	21
Nerimbura Alpacas & Transport .....	22
Rosegum Alpacas.....	23
Samsuri .....	24
Somerset Alpacas .....	25
Suri Retreat .....	26
Tiyata Suri .....	27
ZamZook Park Alpacas Pty Ltd .....	28
Shearers.....	29
Membership Options.....	30
NOTES.....	31

# Altomrose Alpacas



## Location

Malanda, Qld 4885

## Contact

Nathan & Romana Watson| Phone: 0400 258 812

Email: [Nathanwatson2@bigpond.com](mailto:Nathanwatson2@bigpond.com)

## Alpaca Type

Huacaya

## Comments

We are a small hobby breeder of huacaya alpacas located near Malanda, Far North QLD. Our focus is processing our fibre by hand on farm to produce handcrafted products. Always happy to talk alpacas and answer questions whilst we continue to learn on our own alpaca journey.



# Ann Dee Alpacas



## Location

Coorooman, Capricorn Coast, Qld 4722

## Contact

Anne Vander Hoeven | Phone: 0403 827 012

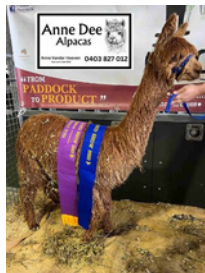
Email: [anne.vdhoeven@skymesh.com.au](mailto:anne.vdhoeven@skymesh.com.au)

## Alpaca Type

Suri

## Comments

Creating all manner of craft projects with our own suri alpaca fibre. A complete paddock to product enterprise that is done on our farm in the locality of Cooroman on the Capricorn Coast near Yeppoon. An active member of the Rockhampton Fibre Arts Inc. that runs a monthly fibre arts workshop.



# Babinda Rainforest Farm Alpacas



## Location

Babinda, 4861 FNQ

## Contact

Michelle Harris | Phone: 0427517685

Email: babindafarmstay@hotmail.com

Socials: <https://www.facebook.com/BabindaRainforestFarm>

## Alpaca Type

Suri & Huacaya

## Comments

We are a new and small farm intending to breed both Huacaya, Suri and their fleece . We offer support to new Alpacas owners in Far North Queensland. Our farm is open by appointment only to families for Meet & Greet Alpacas. We are also a small Farmstay for Caravanners Only.





# Ballark Ridge Alpacas



## Location

Murgon, South Burnett Region

## Contact

Dawn Haughton-Wyatt| Phone: 0412 183 841

Email: [ballarkridge.alpacas@gmail.com](mailto:ballarkridge.alpacas@gmail.com)

Social: [www.facebook.com/ballarkridge.alpacas](https://www.facebook.com/ballarkridge.alpacas)

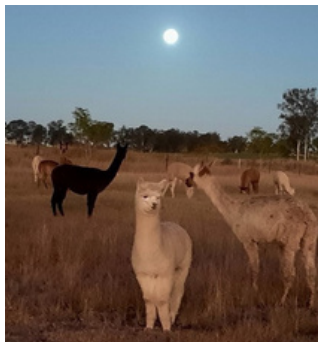
## Alpaca Type

Huacaya and Suri

## Comments

Male and female alpacas for sale for breeders and pets.

Fleeces available for sale.





# Barr Anne Alpacas



## Location

Springsure, Queensland 4742

## Contact

Katherine Travers | Phone: 0408 841 216

Email: [pengarra@bigpond.com](mailto:pengarra@bigpond.com)

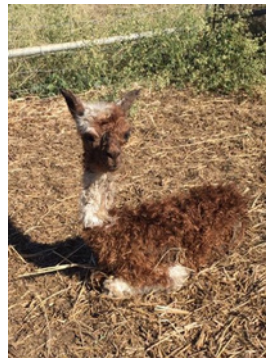
Social: [www.facebook.com/BARR-ANNE-Alpacas-775949879083477](https://www.facebook.com/BARR-ANNE-Alpacas-775949879083477)

## Alpaca Type

Suri

## Comments

Breeding stock for sale, Pets for sale, Alpaca products



# Belli Park Alpacas



## Location

Kenilworth, Qld

## Contact

Russell Pollard 0413 013 955

Email: [belliparkalpacas@pm.me](mailto:belliparkalpacas@pm.me)

Socials: [www.facebook.com/profile.php?id=61556351224133](https://www.facebook.com/profile.php?id=61556351224133)

(Belli Park Alpacas)

## Alpaca Type

Huacaya

## Comments

Striving to achieve the continuous improvement of the genetics of our small quality herd.



# Capricorn Park Alpacas



## Location

707 Tanby Rd, Yeppoon, 4722

## Contact

Desley Barlow 0429 391 133

Email: [desleybar@bigpond.com](mailto:desleybar@bigpond.com)

## Alpaca Type

Huacaya & Suri

## Comments

Stock for sale and breeding males.



# Dara Alpacas



## Location

The Caves, 4702

## Contact

Don & Rosalee Altschwager 0499 306 648 & 0749342071

Email: [altschwager1@bigpond.com](mailto:altschwager1@bigpond.com)

## Alpaca Type

Suri

## Comments

Breeding soft fleeced coloured suri. Support for owners/members



# Didohama Suri Stud



## Location

Between Esk and Toogoolawah in the Brisbane Valley

## Contact

Trisha Gauvin | Phone: 07 3824 1835 or 0419 383 369

Email: [didohama@gmail.com](mailto:didohama@gmail.com)

## Alpaca Type

Suri

## Comments

Breeding both white and colour, wethers, breeding dams for sales





# Double-H Alpacas



## Location

Toowoomba Region

## Contact

Margaret Hassall | Phone:0746967576

Email: [Doubleh.alpacas@gmail.com](mailto:Doubleh.alpacas@gmail.com)

Website: [www.doubleh-alpacas.com](http://www.doubleh-alpacas.com)

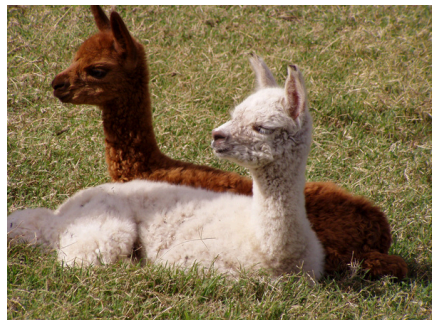
Social: [www.facebook.com/Doublehalpacas](http://www.facebook.com/Doublehalpacas)

## Alpaca Type

Huacaya

## Comments

Established in 1994, Double-H Alpacas is one of the largest and most experienced alpaca studs in Queensland. We offer a range of services and have a variety of animals for sale. Fleece and Products are also available in our farm shop.



# Dunroca Alpacas



## Location

12656 Peak Downs Highway, Coppabella QLD 4741

## Contact

Jodi & Mick Barnes | Phone: 0408 635 563

Email: [enquires@dunrocoaalpacas.com.au](mailto:enquires@dunrocoaalpacas.com.au)

Website: [www.dunrocaalpacos.com.au](http://www.dunrocaalpacos.com.au)

Social: [www.facebook.com/profile.php?id=100087246471186](https://www.facebook.com/profile.php?id=100087246471186)



## Alpaca Type

Suri

## Comments

Specialising in the stunning Suri alpaca. Animal sales, including stud services, breeding stock, show quality animals, pets and herd guards. Raw fleeces and alpaca products also. After sales service, and always available for advice and mentoring.





# Engle End Farm



## Location

Sunshine Coast Hinterland, Qld

## Contact

Scot Perrie 0448 956 482 | Sarah Davidson 0418 759 762

Email: [info@engleendfarm.com](mailto:info@engleendfarm.com)

Website: [engleendfarm.com](http://engleendfarm.com)

Facebook: <https://www.facebook.com/engleendfarm>

Instagram: [https://www.instagram.com/engle\\_end\\_farm](https://www.instagram.com/engle_end_farm)

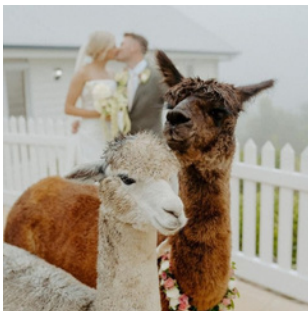


## Alpaca Type

Huacaya (and a couple of Llamas)

## Comments

Breeding for temperament and robust animals that can withstand the Sunshine Coast weather. Husbandry classes, consult service for local pet owners and stud services. Therapy alpacas and models for the perfect pictures. Passionate about fleece and fleece products.



# Golden Charm Alpacas

*Golden Charm*

## Location

Burnett Heads, Qld 4670

## Contact

Jessie & Darryl Raines | Phone: 0407 155 403 or 07 4159 4624

Email: [gcalpaca@bigpond.net.au](mailto:gcalpaca@bigpond.net.au)

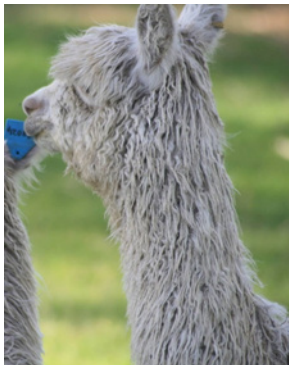
Social: [www.facebook.com/jessie.goldencharmaltpacas](https://www.facebook.com/jessie.goldencharmaltpacas)

## Alpaca Type

Suri

## Comments

Alpaca Sales, Pets, Livestock Guardian, Breeding stock



# Hannamay Park



## Location

Nanango

## Contact

Doris Drew | Phone:0403310683

Email: [deedee37@optusnet.com.au](mailto:deedee37@optusnet.com.au)

## Alpaca Type

Huacaya

## Comments

Alpaca products for sale. Whole herd for sale – preferably as whole herd only



# Kidaman Creek Suris



## Location

Kenilworth (Sunshine Coast Hinterland)

## Contact

Scott Polkinghorne 0407767250

Email: [scottpolk@yahoo.com](mailto:scottpolk@yahoo.com)

Socials: <https://www.facebook.com/1311.Obi.Obi>

(Kidaman Creek Pastoral)

## Alpaca Type

Suri

## Comments

Kidaman Creek Pastoral – “Home of the Black and Whites” (Suri Alpacas, Belted Galloway and Angus cattle). Looking to start / participate in local networking alpaca community in Gympie / Sunshine Coast area, to expand knowledge (e.g. processing options for alpaca fleece, breeding, cria birthing, planting local grasses, drenching etc) specific to our local area.



# Kings Ransom Alpacas



## Location

62 Causeway Road, Booyal Queensland 4671

## Contact

Shane McMahon

Email: [shabbie001@gmail.com](mailto:shabbie001@gmail.com) | Phone: 0428 933 866

## Alpaca Type

Suri

## Comments

Animal Sales: Pets to suit all budget types, networking, sharing knowledge, small animal husbandry including shearing, toenails, faecal egg counts.



# Majeska Alpacas



## Location

Raglan Qld, 4697

## Contact

Kelly Holznagel | Phone: 0439 788 436 Katelyn

Holznagel | Phone: 0488 992 602

Email: [majeska@outlook.com](mailto:majeska@outlook.com)

Social: Facebook: [/www.facebook.com/MajeskaAlpaca](https://www.facebook.com/MajeskaAlpaca)

Instagram: [https://www.instagram.com/](https://www.instagram.com/majeskaalpacas/)

[majeskaalpacas/](#)

## Alpaca Type

Suri & Huacaya

## Comments

Coloured suri & huacaya, breeding and showing, stud services, pets & guards available, after sale care.





# Nerimbera Alpacas & Transport



## Location

74 Nerimbera School Road, Nerimbera Qld 4701

## Contact

Cheryl Cochrane | Phone: 0417 127 625

Byron Cochrane | Phone: 0409 340 132

Email: [cherylc5@bigpond.com](mailto:cherylc5@bigpond.com)



## Alpaca Type

Huacaya

## Comments

Offering Alpaca stud services, breeding stock, pets, guards, alpaca fleece and products. After sales support, mentoring and education. Commercial transporter. Alpaca experience functions.





# Rosegum Alpacas



## Location

Springsure QLD 4722

## Contact

Michelle Hamilton | Phone: 0432 044 284 Email:

rosegumalpacas@gmail.com Website:

www.rosegumalpacas.com.au Facebook:

www.facebook.com/RosegumAlpacas Instagram:

www.instagram.com/rosegumalpacas



## Alpaca Type

Suri

## Comments

Animal Sales - Breeding Stock/Herd Guards/Pets to suit ALL budget types.  
Elite Genetics, Alpaca Products with Online Store, Friendly ongoing support for alpaca owners. Open Days, Paddock to Product Alpaca Displays & workshops.



# Samsuri



Samsuri Alpacas

*Breeding Coloured Suri Alpacas Since 2005*

*Suri Alpacas – Smooth as Silk*

## Location

Crows Nest Qld

## Contact

Robyn Harrison | Phone: 0418 748 585

Email: [samsuri@tpg.com.au](mailto:samsuri@tpg.com.au)

Website: [www.samsurialpacos.com.au](http://www.samsurialpacos.com.au)

Social: [www.facebook.com/samsurialpacos](https://www.facebook.com/samsurialpacos)

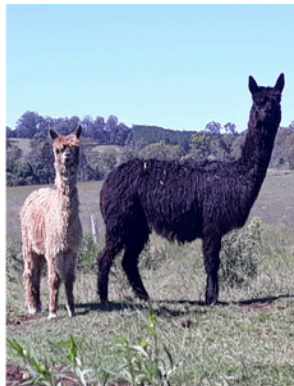


## Alpaca Type

Coloured Suri

## Comments

Breeding Stock for sale, Pets for sale, Alpaca Products for sale, Stud services



# Somerset Alpacas



## Location

Forest Hill, 4342, Queensland (1 hour west of brisbane in the lockyer valley)

## Contact

Geoff Coutts-Smith | Phone: 0488 774 735

Email: [geoff@somersetalpacas.com.au](mailto:geoff@somersetalpacas.com.au)

Website: [www.somersetalpacas.com.au](http://www.somersetalpacas.com.au)

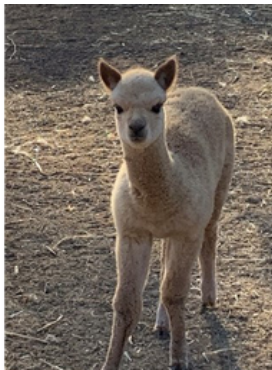
Social: [www.facebook.com/profile.php?id=100075877105896](https://www.facebook.com/profile.php?id=100075877105896)

## Alpaca Type

Huacaya

## Comments

Stud Services, Breeding stock for sale, Pets for sale, Alpaca products



# Suri Retreat Alpacas



## Location

Greenbank, Brisbane, Qld, 4124

## Contact

Katie Blume | Phone: 0427 492 169

Email: [stevens.katie789@gmail.com](mailto:stevens.katie789@gmail.com)

Socials: Suri Retreat Alpacas

## Alpaca Type

Suri

## Comments

Specialising in the exquisite coloured Suri Alpacas we offer stud services, sales and ongoing mentorship for our clients.



# Tiyata Suri



## Location

Oakey, Queensland. Currently agisting out of Strathbogie, Victoria

## Contact

Hayden Berlin | Phone: 0439 611 115

Email: [haydenberlin@outlook.com](mailto:haydenberlin@outlook.com)

Social: <https://www.facebook.com/TiyataSuris>

[https://www.instagram.com/tiyata\\_suris/](https://www.instagram.com/tiyata_suris/)

## Alpaca Type

Suri

## Comments

Focusing on the beautiful, black suri. We have plenty of quality females available in a variety of colours with discounted packages available!





# ZamZook Park



## Location

64 Fairydale Road, Welcome Creek QLD 4670

## Contact

Sandra Robertson | Phone: 0401 615 642

Email: [sandra@zamzookpark.com.au](mailto:sandra@zamzookpark.com.au)

Social: [www.facebook.com/zamzookalpacas](http://www.facebook.com/zamzookalpacas)

## Alpaca Type

Huacya and Suri

## Comments

White Suri, Grey and Appaloosa Huacaya Stud Male services available, Pets and Breeding stock for sale, Alpaca Animal Assisted Therapy.



# Shearers

NAME	NUMBER	NOTES
Louise Blackley	0431 039 719	Most of QLD (offers saddle first shearing)
James Wheeler	0403 972 609	Most of Qld
Mick Elkins	0408 665 228	Southern Qld
Chris Power	0438 653 782	Qld
Gary Boseley	0411 720 420	All of Qld
Katelyn Holznagel	0488 992 602	Central Qld
Shane McMahon	0428 933 866	Agnes Waters/Gympie Area
Jake Ginty	0427 370 317	Cairns to Brisbane Regions (Sheep, goats, alpacas, Llamas)

## Preparing for Shearing – Tips & Reminders

All alpacas need shearing **every year**, and Qld has a few shearers to choose from that travel around the state. Most shearers are in Qld for August and September only, so you need to have a shearer booked by around May/June to make sure you don't miss out on getting your animals shorn. The shearers have a pretty tight schedule while in Qld, so you need to be prepared for when they arrive.

## Shade & Shelter

Ensure your animals are in a secure, shaded area **before** the shearer arrives. They won't be able to help prepare your yards. Shearers cannot shear wet animals so if rain is forecast, undercover areas are essential to keep animals dry.

## Health Checks

Most shearers will trim teeth and toenails if necessary, and may administer injections like 5-in-1. Always check in advance if these services are offered if you require them.

## Power Requirements

Some shearers may need access to power. Confirm this when booking.

## Fleece Handling

If you plan to use your fleece for showing or craft purposes, it's important to handle it correctly from the start. Use proper fleece bags, one for saddle (this is your highest quality fibre) One for neck and one for legs and belly (this is coarser and less desirable for end product) Proper handling and clear labelling (Name of animal and year) from the beginning ensures your fleece stays clean, organized, and valuable for its intended purpose.

## Fleece Samples for Testing

Collect a sample at shearing time if you'd like it tested for micron as this helps to work out what you can use your fleece for. Your shearer can help with this if you let them know—just put the sample in a zip-lock bag, clearly labelled with the animal's name and the date.

*Disclaimer: This list includes shearers known to operate in the Queensland Region. Please note, we cannot offer recommendations or assume responsibility for the results of any shearing services. We encourage you to conduct your own independent research when selecting a shearer.*



# Membership Options



Australian Alpaca  
ASSOCIATION  
QUEENSLAND

## Associate Membership \$50/year

Apply for a herd code and prefix, Transfer animals, Participate in AAA events and exhibit at AAA shows, Receive and access members' only electronic information. Cannot register cria, certify sires or issue sire authorities.



Australian Alpaca  
ASSOCIATION  
QUEENSLAND

## Youth Educational/Membership \$50/year

For educational institutions or 1 person under 18. As per full membership except no voting rights. Schools with an agriculture program. Family memberships are available for youth members of the same family. \$50 for the first child, \$25 for the second child, and no cost for third and subsequent children.



Australian Alpaca  
ASSOCIATION  
QUEENSLAND

## Full Membership \$250/year

Retain a herd code and prefix, Register and transfer alpacas, Participate in AAA events and exhibit at AAA shows, 1 vote in elections, Receive and access members' only electronic information.



Australian Alpaca  
ASSOCIATION  
QUEENSLAND

## Joint Membership \$275/year

As per full membership but up to 4 people can participate in AAA events and shows, 2 votes in elections.

We offer a variety of membership options to suit everyone, from alpaca breeders to new enthusiasts. Each membership provides access to resources, events, and networking opportunities within the alpaca community. Find the one that's right for you.

# [ealpaca.com.au/join](http://ealpaca.com.au/join)





This Queensland Region Breeders' Directory is a free publication issued by the Queensland Region of the Australian Alpaca Association in support of its membership.

Our breeders are located across most areas of Queensland and operate in a diverse range of conditions. Many of our breeders have stock that have adapted to the Queensland environment.

If you are new to the industry, your interactions with breeders should be firstly about whether alpacas are “right for me”, the commitment you can make and the conditions they will live in. Whilst alpacas are lovely animals, they are not for everyone or for every location.

Useful links can be found at the Australian Alpaca Association website  
<https://alpaca.asn.au>

AAA registered breeders should be able to give you advice on buying your animals.

Look for the AAA Logo!



Disclaimer: This directory is created using information provided by members, and the Queensland Region accepts no responsibility for the accuracy or reliability of the details shared.